



House Plan:

LOT #4404

Newport Estate

Address: Tiffany Street, Newport (Qld), 4020



350 m²

The Hadley - B

Package Price From

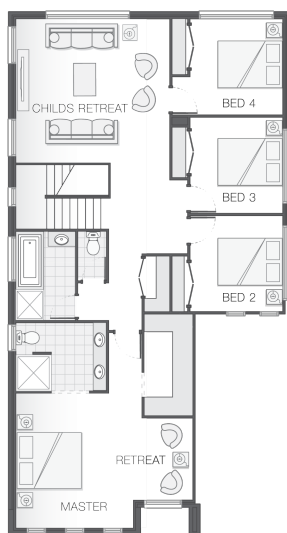
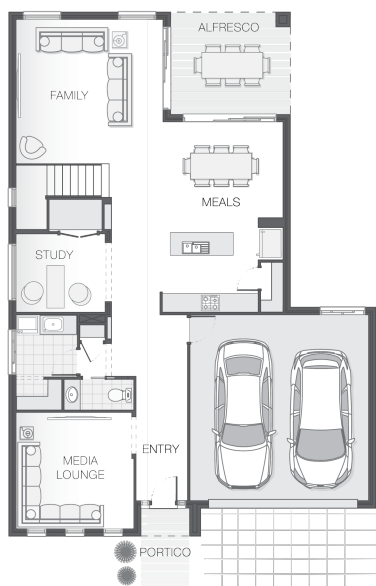
4

2

2

32 sq

\$749,499*



About package:

The Hadley home design leaves absolutely nothing to be desired, perfectly balancing entertaining, living and study zones in generous proportions. The lower level boasts an alfresco, plentiful kitchen, family and living zone for all the family moments yet cleverly includes quiet zones for study and time alone. The upper level comprises a spacious master retreat with ensuite and walk-in-robe, additional bedrooms and a retreat creating the ideal space to escape and unwind.

ENQUIRE NOW:

Martin Donovan • P: 0456 624 304 • E: brisbane.display@adenbrook.com.au

Images depicted on this site are for illustration purposes only. Facades and other images of homes and land estates may include optional upgrades, additional fixtures, finishes and home or estate features that are not included in the base price of the home or land package such as landscaping, feature tiling, decking, furnishing, feature lighting, pools, etc. Land estate pricing and plans are subject to developer guidelines and may vary at any time.

Powered by iBuildNew

adenbrook
homes

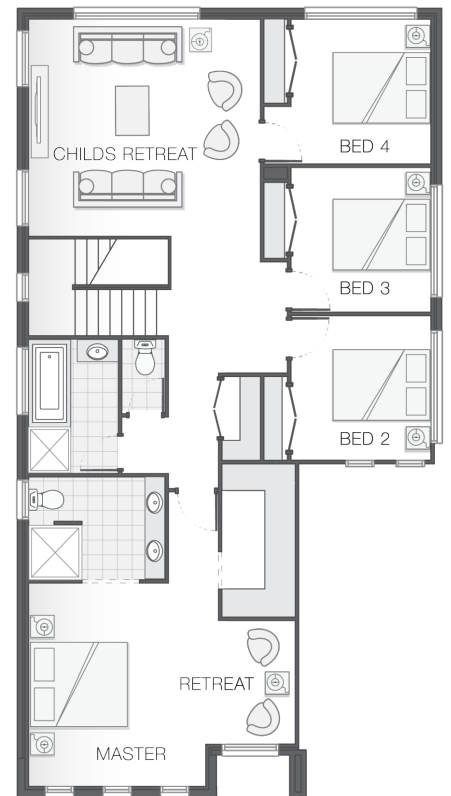
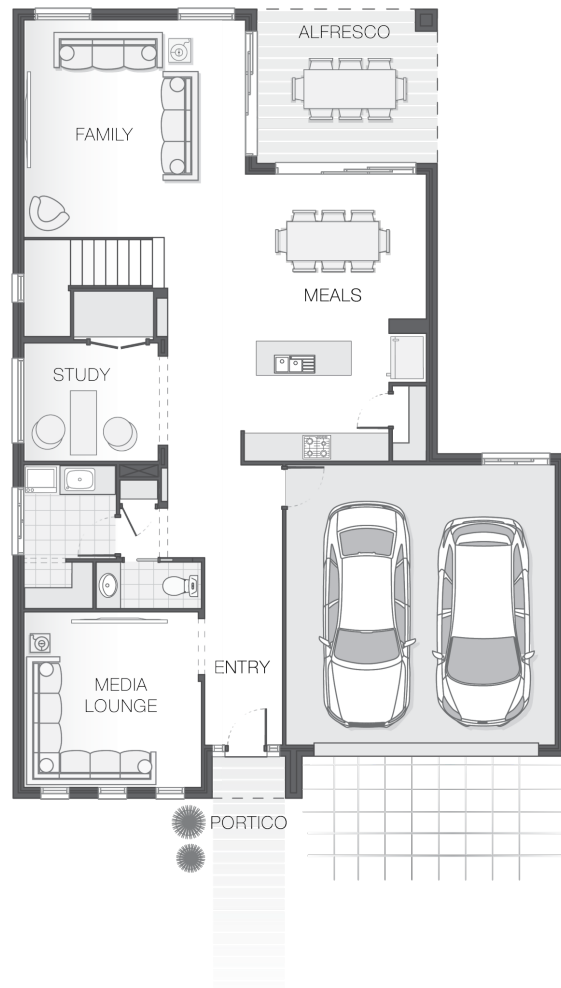
REF: IADEQHL518991

House Features:

- ✓ Tiling and carpet throughout
- ✓ TV antenna and clothesline
- ✓ Brick and rendered letterbox
- ✓ Exposed aggregate driveway and path
- ✓ Daikin ducted air conditioning
- ✓ Tiling and integral slab to alfresco
- ✓ 1020mm entry door
- ✓ 2590mm ceiling height to lower level
- ✓ Flyscreens to windows
- ✓ LED downlights
- ✓ Cold water tap to fridge space
- ✓ 20mm stone benchtops to kitchen, ensuite and bathrooms
- ✓ Westinghouse stainless steel dishwasher
- ✓ Externally ducted rangehood
- ✓ Soft-close drawers to kitchen, ensuite and bathrooms
- ✓ Shower niche to ensuite & bathroom

Estate Features:

- ✓ Newport Residents have the privilege of
- ✓ the moreton bay region and it's beautiful peninsula
- ✓ Live the Coastal lifestyle
- ✓ 15 Min drive to North Lakes Westfield Shopping Centre
- ✓ Watch the boats on the Bay
- ✓ Join the Walkers and Riders on the Waterfront
- ✓ Enjoy the Amazing Beach Side Lifestyle
- ✓ 25 min drive to Brisbane Airport
- ✓ 35 min drive to Brisbane CBD
- ✓ 45 min drive up to the Sunshine Coast
- ✓ 1 Hour drive to Gold Coast
- ✓ This is a unique opportunity and invite all genuine buyers



ENQUIRE NOW:

Martin Donovan • P: 0456 624 304 • E: brisbane.display@adenbrook.com.au

Images depicted on this site are for illustration purposes only. Facades and other images of homes and land estates may include optional upgrades, additional fixtures, finishes and home or estate features that are not included in the base price of the home or land package such as landscaping, feature tiling, decking, furnishing, feature lighting, pools, etc. Land estate pricing and plans are subject to developer guidelines and may vary at any time.