



Sunrise

4 2 2 26 sq

Facade name: Barcomb

House Plan:

LOT #14 IN SUNBURST ESTATE

Sunburst Estate

Address: Diesel Close, Teralba, 2284



390 m²

House and land package price:

From **\$663,800***

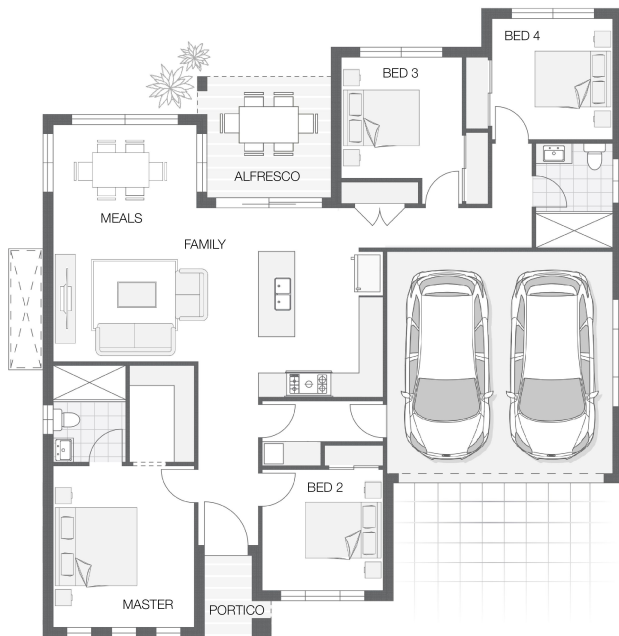
About package:

ONLY 4 BLOCKS LEFT!!!

*** Free for a Limited Time Only - RUN ON SUN PROMOTION that includes Bradford Energy 4kW SolarPack Lite PLUS 2 Haiku Big Ass Fans ***

INCLUSIONS:

- Daikin Ducted Air Conditioning
- 20mm Stone benchtops to kitchen and bathroom*
- Shower niche to bathroom and ensuite
- Australian Custom Made Kitchen Cabinetry and Bathroom Vanities
- Soft Close to Bathroom Cupboards
- Soft Close to Kitchen Drawers and Cupboards
- Westinghouse 900mm Oven and stainless steel appliances
- Concrete Driveway Allowance
- Quality flooring - carpet and tiles
- Flyscreens to all openable windows
- Remote Controlled garage door + 2 remotes
- Slab allowance for Alfresco and Portico
- Tiled Alfresco and Portico
- Site Work Allowance*
- 2590mm high ceilings
- Clipsal iconic ultramodern range switch gear
- Double GPO's throughout
- Corinthian 1020mm Madison Entry Door
- All connections and services



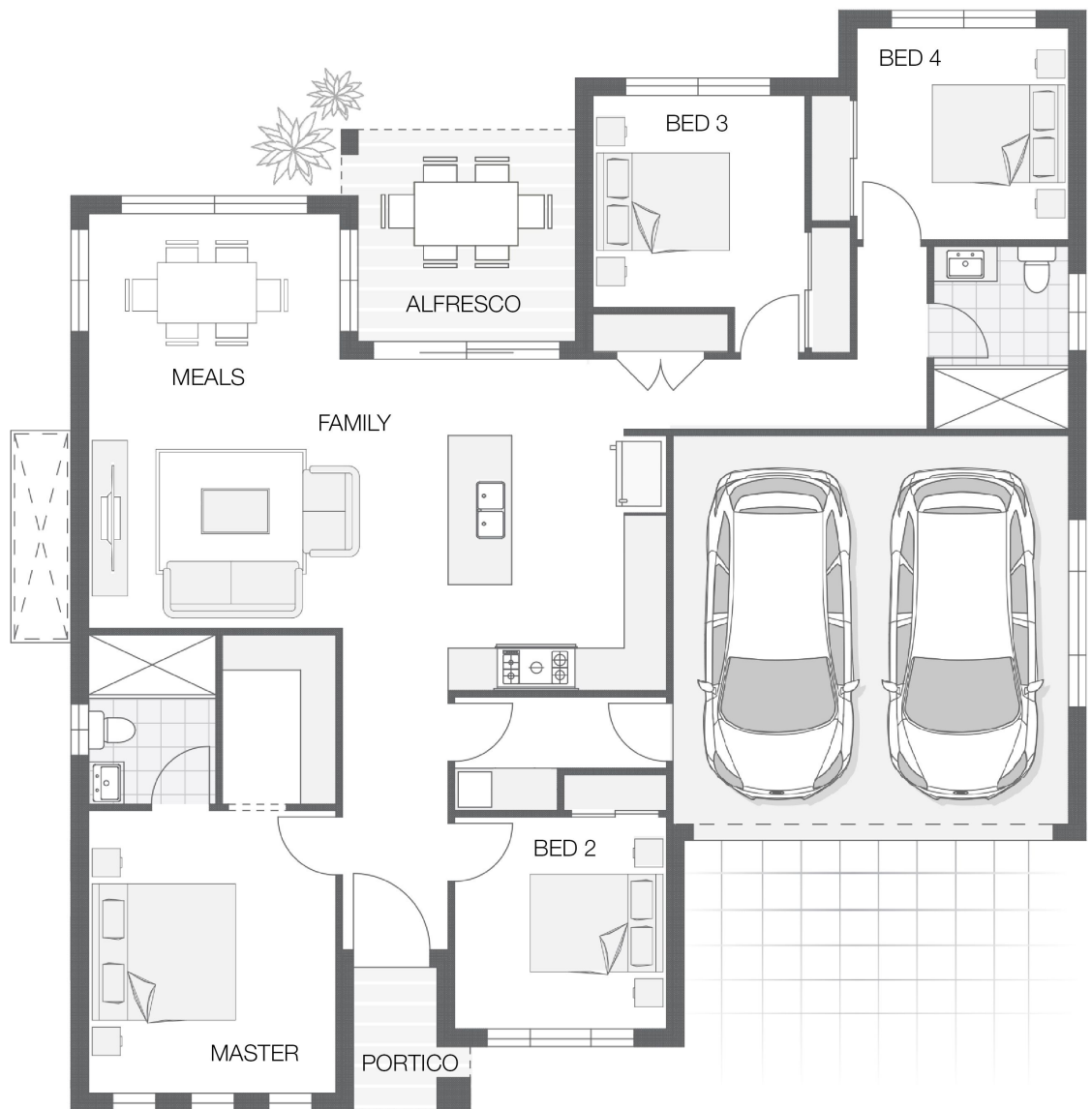
ENQUIRE NOW:

Paul James • P: 0418 656 366 • E: Hawkesbury.bluemountains@adenbrook.com.au

Plans and designs depicted may change with facade selection. All drawings and photographs are for illustrative purposes only. This work is exclusively owned by AB Aust. IP Pty Ltd (ACN 163 575 077) and cannot be reproduced or copied wholly or in part, in any form without permission of AB Aust. IP Pty Ltd. Any prices in this document include GST, are subject to change without notice, relate only to the base house price and standard inclusions. Site costs will vary depending on site conditions, local Council requirements, estate guidelines and any other statutory requirements applicable. Adenbrook Homes does not have a hold on the block, this package is subject to land availability and you securing the land through the land agent directly. For more information please speak to one of our friendly New Home Consultants.

House Features:

- ✓ Ultimate Bundle
- ✓ Floor Coverings
- ✓ 1020mm wide Feature Front Entry Door
- ✓ Front Landscape Pack - BRONZE to the value of \$4,000
- ✓ Ducted Air Conditioning
- ✓ Stone Benchtops to Kitchen and Bathrooms*
- ✓ Flyscreens
- ✓ Shower Niches to Ensuite & Bathroom
- ✓ Covered Concrete & Tiled Alfresco area
- ✓ Concrete Driveway Allowance
- ✓ Double GPO's Throughout
- ✓ Stainless Steel Appliances
- ✓ 2590mm High Ceilings
- ✓ Basix
- ✓ 3 Phase Underground Power
- ✓ Termite Barrier Protection
- ✓ Soft Close Drawers & Doors



ENQUIRE NOW:

Paul James • P: 0418 656 366 • E: Hawkesbury.bluemountains@adenbrook.com.au

Plans and designs depicted may change with facade selection. All drawings and photographs are for illustrative purposes only. This work is exclusively owned by AB Aust. IP Pty Ltd (ACN 163 575 077) and cannot be reproduced or copied wholly or in part, in any form without permission of AB Aust. IP Pty Ltd. Any prices in this document include GST, are subject to change without notice, relate only to the base house price and standard inclusions. Site costs will vary depending on site conditions, local Council requirements, estate guidelines and any other statutory requirements applicable. Adenbrook Homes does not have a hold on the block, this package is subject to land availability and you securing the land through the land agent directly. For more information please speak to one of our friendly New Home Consultants.