





The Deakon

 4  2  2  25 sq

Facade name: Griffin

House Plan:



LOT #2271

Menangle Park

Address: Proposed Road, Menangle Park, 2563



420 m²

House and land package price:

From **\$749,900***

About package:

This Adenbrook Home & Land package is located in the highly sought-after estate of Menangle Park. Set on a 420m² block of land due to register mid 2021, we have coupled it with our Deakon home design.

With an outdoor alfresco area that merges seamlessly with the lower level kitchen, dining and living spaces the lower level is certain to accommodate the entire family. The upper floor provides a stylish layout with master retreat including ensuite and walk-in-robe sensibly separate from additional bedrooms and media room creating a feeling of privacy and space in compact footprint.

This House and Land Package includes:-

- * Standard Site Costs and Standard Basix Requirements
- * Builders range tiles & carpet throughout home
- * Tiling to the Alfresco and Portico
- * Coloured Concrete Driveway
- * Daiken Reverse Cycle Ducted Air Con.
- * Caroma Bathroom Accessories
- * PLUS our fantastic Ultimate Upgrade Bundle!

Contact us today to find out how we can help you create your dream house and land package.

ENQUIRE NOW:

Adenbrook Homes • P: 0406 248 064 • E: sydneywest.southwest@adenbrook.com.au

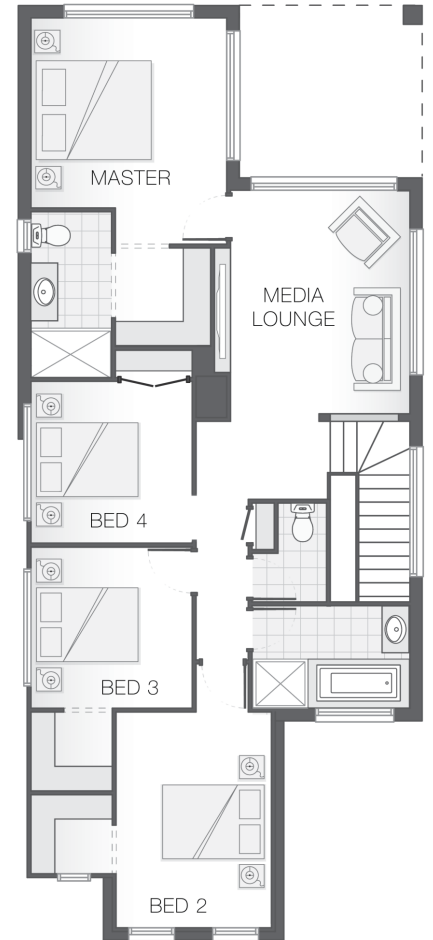
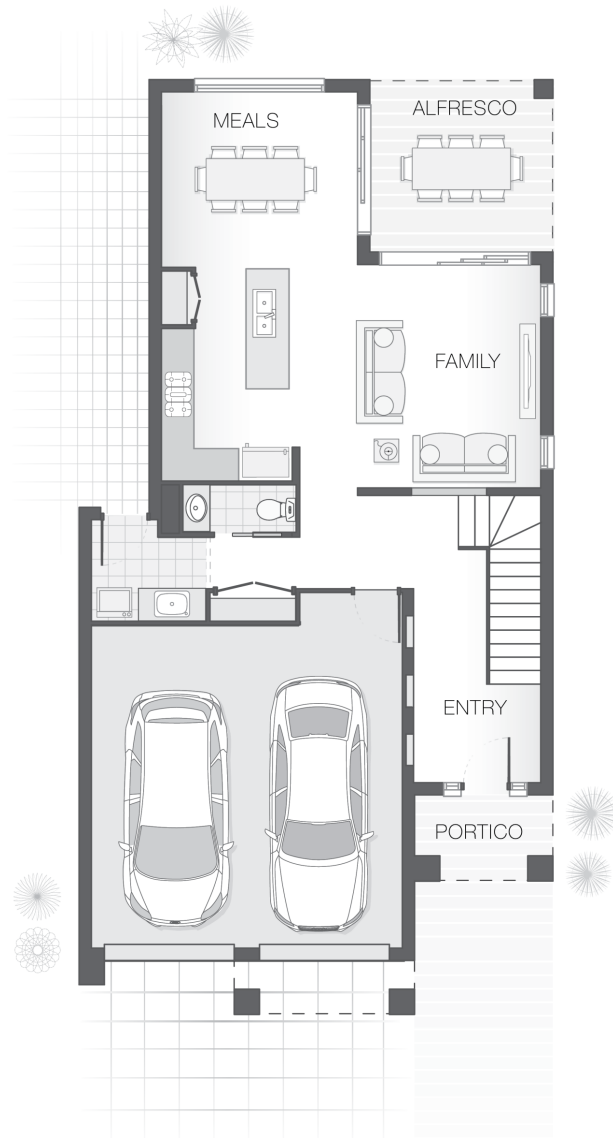
Images depicted on this site are for illustration purposes only. Facades and other images of homes and land estates may include optional upgrades, additional fixtures, finishes and home or estate features that are not included in the base price of the home or land package such as landscaping, feature tiling, decking, furnishing, feature lighting, pools, etc. Land estate pricing and plans are subject to developer guidelines and may vary at any time.

House Features:

- ✓ Tiling to the Alfresco and Portico
- ✓ 1020mm Entry Door
- ✓ Shower Niches
- ✓ Soft-close drawers and doors to Kitchen and Bathrooms
- ✓ 2590mm Ceiling Upgrade to the Ground Floor Only
- ✓ Flyscreens To all openable windows
- ✓ 20mm Stone benchtop to the kitchen, bathroom and Ensuite.
- ✓ Coloured Concrete Driveway
- ✓ Standard Site Costs and Standard Basix Requirements
- ✓ Builders range tiles & carpet throughout home
- ✓ Daiken Reverse Cycle Ducted Air Conditioning
- ✓ Westinghouse Cooktop, Oven and Dishwasher

Estate Features:

- ✓ Spring Farm Shopping Centre
- ✓ Menangle Station
- ✓ Broughton Anglican College



ENQUIRE NOW:

Adenbrook Homes • P: 0406 248 064 • E: sydneywest.southwest@adenbrook.com.au

Images depicted on this site are for illustration purposes only. Facades and other images of homes and land estates may include optional upgrades, additional fixtures, finishes and home or estate features that are not included in the base price of the home or land package such as landscaping, feature tiling, decking, furnishing, feature lighting, pools, etc. Land estate pricing and plans are subject to developer guidelines and may vary at any time.