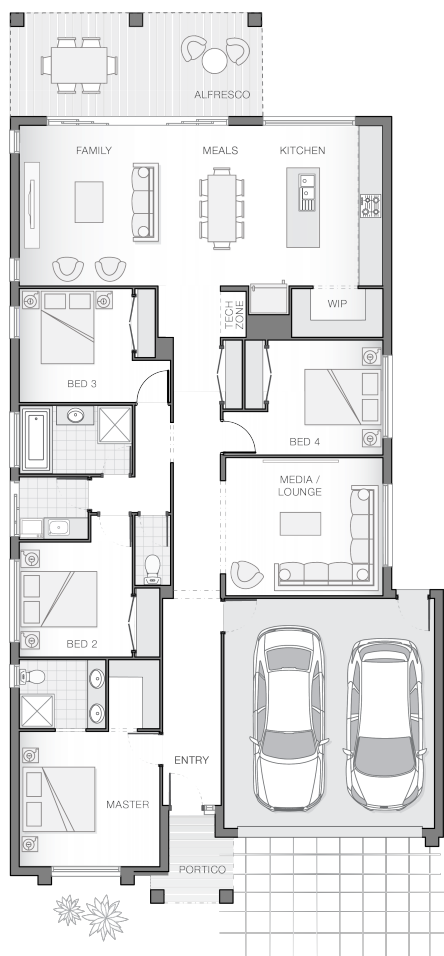




House Plan:



LOT #3122

The Surrounds

Address: Meadow Circuit, Helensvale, 4212



425 m<sup>2</sup>

The Isla - C - Gold Coast

Package Price From

4

2

2

221 m<sup>2</sup>

**\$697,339\***

About package:

Presenting our latest yet to be constructed new home. The Isla home design is sophisticated and stylish, offering all the modern features that you need to relax, entertain and enjoy! The outdoor entertaining area runs the width of the home and flawlessly integrates with the family room, meals area and generous kitchen complete with butler's pantry creating an oversized entertainers delight. The master retreat with ensuite and walk-in-robe boasts great separation while the central living zone is dedicated to additional bedrooms and the media room.

Brought to you by award winning builder Adenbrook Homes, this home and land package is the perfect starter home.

For a limited time this package comes full of features as well as:

- Exposed Aggregate Driveway
- 2 x Split System Air Conditioning
- Floor Coverings (tiles & carpet)
- Stone Benchtops to Kitchen & Bathrooms
- Stainless Steel Westinghouse Appliances
- LED Downlights
- Feature Facade Render
- Tiled Undercover Alfresco Entertaining Area
- Soft Close Doors & Drawers to Kitchen
- Fencing and Landscaping
- Plus much, much more!

ENQUIRE NOW:

Barrie Kluver • P: 0425516519 • E: goldcoast@adenbrook.com.au

Plans and designs depicted may change with facade selection. All drawings and photographs are for illustrative purposes only. This work is exclusively owned by AB Aust. IP Pty Ltd (ACN 163 575 077) and cannot be reproduced or copied wholly or in part, in any form without permission of AB Aust. IP Pty Ltd. Any prices in this document include GST, are subject to change without notice, relate only to the base house price and standard inclusions. Site costs will vary depending on site conditions, local Council requirements, estate guidelines and any other statutory requirements applicable. Adenbrook Homes does not have a hold on the block, this package is subject to land availability and you securing the land through the land agent directly. For more information please speak to one of our friendly New Home Consultants.