

The Kendall

4 2 1 19 sq

Facade name: Byron

House Plan:



LOT #111

Figtree

Address: Eighth Avenue, Austral, 2179



315 m²

House and land package price:

From **\$679,900***

About package:

This Fixed Price Adenbrook House & Land package is located in the highly sought-after estate of Figtree, Austral. Set on a 315m² block of land due to register late 2021, we have coupled it with our Kendall home design.

This House and Land Package includes:-

- * 100% Fixed Site Costs
- * Basic Package Included
- * Builders range tiles & carpet throughout home
- * Tiling to the Alfresco and Portico
- * Coloured Concrete Driveway
- * Daiken Reverse Cycle Ducted Air Con.
- * Caroma Bathroom Accessories
- * PLUS our fantastic Ultimate Upgrade Bundle!

-- Our ULTIMATE BUNDLE PACKAGE has fantastic inclusions of
* 2590mm ceiling heights throughout (ground floor only to double storey homes)

- * shower Niche to Bathroom and Ensuite
- * Monier Atura Low Profile Roof Tiles
- * 1020mm Entry Door
- * Flyscreens to all openable windows
- * 20mm Stone benchtop to the kitchen, bathroom and Ensuite.
- * Westinghouse Dishwasher, just to name a few

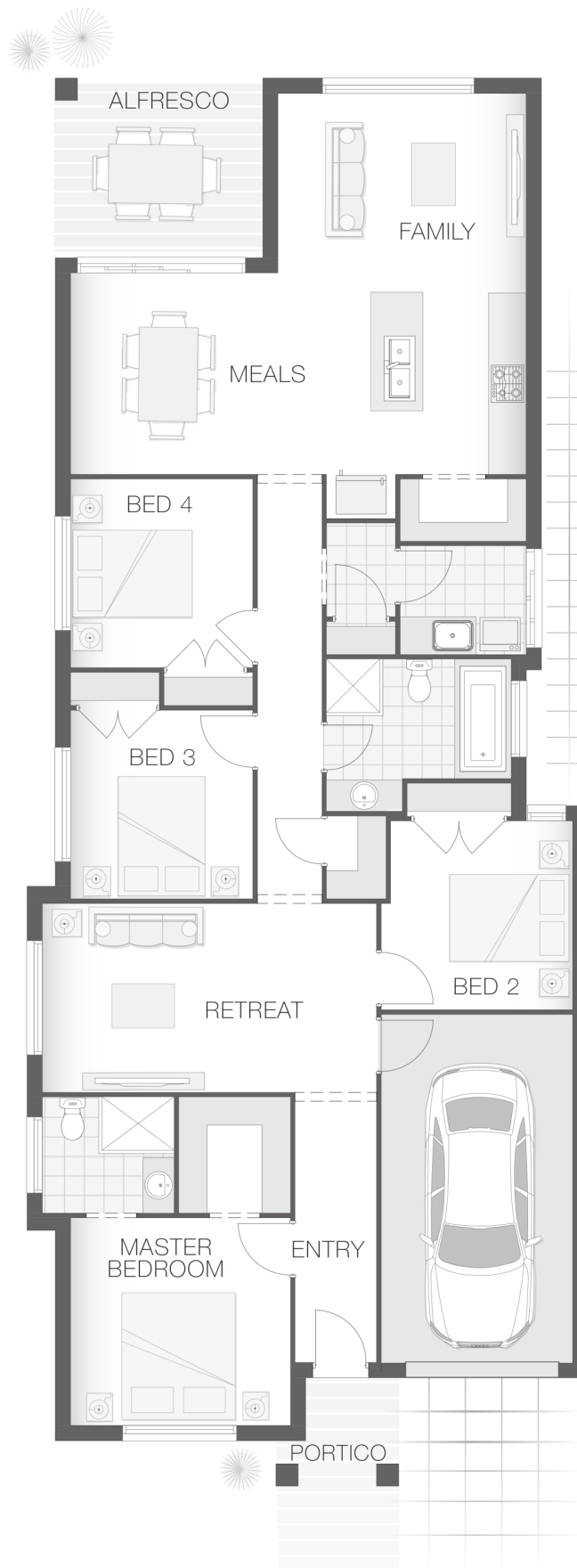
ENQUIRE NOW:

Adenbrook Homes • P: 0406 248 064 • E: sydneywest.southwest@adenbrook.com.au

Images depicted on this site are for illustration purposes only. Facades and other images of homes and land estates may include optional upgrades, additional fixtures, finishes and home or estate features that are not included in the base price of the home or land package such as landscaping, feature tiling, decking, furnishing, feature lighting, pools, etc. Land estate pricing and plans are subject to developer guidelines and may vary at any time.

House Features:

- ✓ Coloured Concrete Driveway
- ✓ Builders range tiles & carpet throughout home
- ✓ Daiken Reverse Cycle Ducted Air Conditioning
- ✓ Westinghouse Cooktop, Oven and Dishwasher
- ✓ Soft-close drawers and doors to Kitchen and Bathrooms
- ✓ 2590mm Ceiling Upgrade
- ✓ Shower Niches
- ✓ Tiling to the Alfresco and Portico
- ✓ 20mm Stone benchtop to the kitchen, bathroom and Ensuite.
- ✓ 2x Gas Points
- ✓ Flyscreens To all openable windows
- ✓ Much More...



ENQUIRE NOW:

Adenbrook Homes • P: 0406 248 064 • E: sydneywest.southwest@adenbrook.com.au

Images depicted on this site are for illustration purposes only. Facades and other images of homes and land estates may include optional upgrades, additional fixtures, finishes and home or estate features that are not included in the base price of the home or land package such as landscaping, feature tiling, decking, furnishing, feature lighting, pools, etc. Land estate pricing and plans are subject to developer guidelines and may vary at any time.