

The Capestone - A

4 2 2 26 sq

Facade name: Kayman

House Plan:

LOT #16

Moonee Beach Estate

Address: Moonee Beach Estate, Moonee Beach, 2450



546.7 m²

House and land package price:

From **\$722,880***

About package:

FREE OFFER 'Run on Sun 21' – HARNESS THE POWER OF SOLAR ENERGY AND SAVE!

Build that perfect beach house on one of the most spectacular coastal gems on the Eastern Seaboard Moonee Beach Estate. The Capestone home design is the perfect balance between entertaining and relaxation. The lower level offers multiple entertainment zones including an alfresco and indoor dining area, and a separate media room. The upper level features the master retreat with ensuite and walk-in-robe creating a private sanctuary away from the main living area of the home.

Government Grant EXTENDED OFFER \$15,000 CASH BONUS AVAILABLE NOW!

What's included in your beautifully finished, high quality new home;

- All Council Fees and Approvals with M Class Soil
- Full sarking wrap to treated timber frames and roof
- Insulation to walls and ceiling, flyscreens
- Carpet / tiles or vinyl flooring
- Recessed wet areas
- Westinghouse appliances
- Alfresco with recessed stacking sliding doors
- Drop-in laundry tub with cabinet and clothesline
- Full electrical layout with downlights and feature lighting and TV aerial
- Water tank, mailbox and concrete driveway

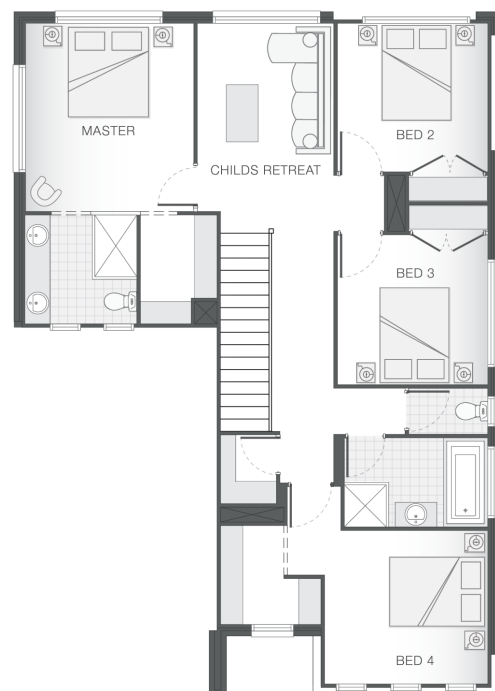
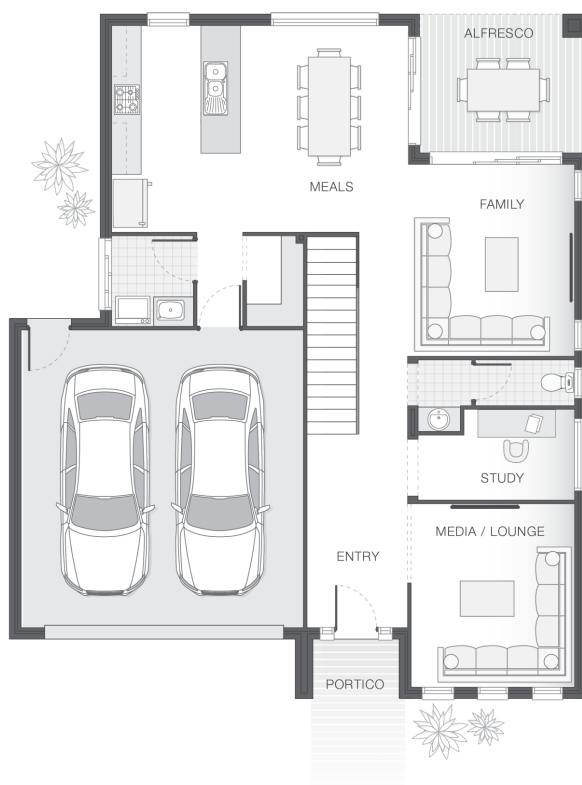
ENQUIRE NOW:

Niki Whelan • P: 0412 797 925 • E: coffs.display@adenbrook.com.au

Plans and designs depicted may change with facade selection. All drawings and photographs are for illustrative purposes only. This work is exclusively owned by AB Aust. IP Pty Ltd (ACN 163 575 077) and cannot be reproduced or copied wholly or in part, in any form without permission of AB Aust. IP Pty Ltd. Any prices in this document include GST, are subject to change without notice, relate only to the base house price and standard inclusions. Site costs will vary depending on site conditions, local Council requirements, estate guidelines and any other statutory requirements applicable. Adenbrook Homes does not have a hold on the block, this package is subject to land availability and you securing the land through the land agent directly. For more information please speak to one of our friendly New Home Consultants.

House Features:

- ✓ 20mm stone benchtops to kitchen
- ✓ Overhead cupboards to kitchen, 4 shelves to Pantry and Linen
- ✓ 900mm Cooker and Dishwasher
- ✓ Wideline aluminium windows, stacker and sliding doors, and flyscreens
- ✓ Three (3) coat Haymes low toxic internal paint system
- ✓ Carpet and Tile or Vinyl floors; modern architraves 67mm x 18mm
- ✓ Run on Sun '21
- ✓ Ultimate upgrade bundle
- ✓ 1200mm Hinged Wideline Aluminium Entry Door
- ✓ Square set ceilings to living area
- ✓ Builders Grant \$15K
- ✓ 2570mm high ceilings
- ✓ Site works allowance
- ✓ Termite resistant "blue pine" framing and trusses and physical termite barriers
- ✓ Letterbox and Clothesline
- ✓ Flyscreens
- ✓ Concrete Alfresco and Portico areas
- ✓ 3000L rainwater tank with submersible pump
- ✓ Obscure glazing to bathroom, ensuite and WC
- ✓ Double lock-up garage with remotes, mailbox, and clothesline
- ✓ Dishwasher
- ✓ Brushed Concrete Driveway
- ✓ Brick exterior, concrete tile roof, 45sqm grey concrete driveway



ENQUIRE NOW:

Niki Whelan • P: 0412 797 925 • E: coffs.display@adenbrook.com.au

Plans and designs depicted may change with facade selection. All drawings and photographs are for illustrative purposes only. This work is exclusively owned by AB Aust. IP Pty Ltd (ACN 163 575 077) and cannot be reproduced or copied wholly or in part, in any form without permission of AB Aust. IP Pty Ltd. Any prices in this document include GST, are subject to change without notice, relate only to the base house price and standard inclusions. Site costs will vary depending on site conditions, local Council requirements, estate guidelines and any other statutory requirements applicable. Adenbrook Homes does not have a hold on the block, this package is subject to land availability and you securing the land through the land agent directly. For more information please speak to one of our friendly New Home Consultants.