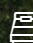
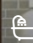




The Sinclair - Y

 4  2  2  29 sq

Facade name: Chadstone

House Plan:



LOT #2414

Carmel Views

Address: Mount Carmel Drive, Box Hill (NSW), 2765



343.7 m²

House and land package price:

Fixed **\$995,900***

About package:

Adenbrook Homes South West Sydney offer this amazing fixed House and Land Package in the highly sought out estate of Carmel Views, Box Hill.

Set on a 343.7m2 block of land due to register Mid 2021, we have coupled this land with our Sinclair Y Home Design.

This House and Land Package includes:

- * 100% Fixed Site Costs
- * Basic Package Included
- * Builders range tiles & carpet throughout home
- * Tiling to the Alfresco and Portico
- * Coloured Concrete Driveway
- * Daiken Reverse Cycle Ducted Air Con.

PLUS our fantastic Ultimate Upgrade Bundle including:

- * 2590mm ceiling heights throughout (ground floor only to double storey homes)
- * shower Niche to Bathroom and Ensuite
- * Monier Atura Low Profile Roof Tiles
- * 1020mm Entry Door
- * Flyscreens to all openable windows
- * 20mm Stone benchtop to the kitchen, bathroom and Ensuite.
- * Westinghouse Dishwasher, just to name a few!

Don't miss out, enquire today to find out how to make this dream a reality.

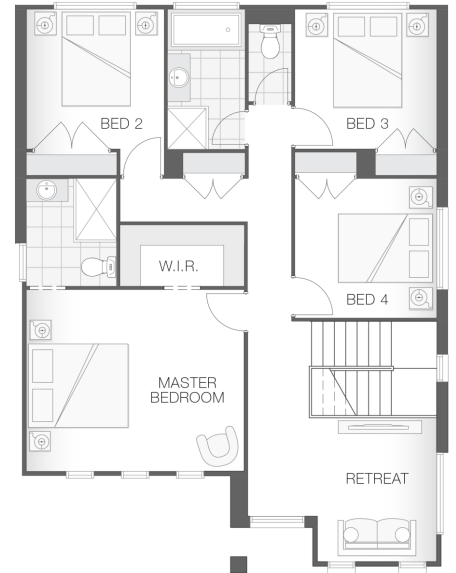
ENQUIRE NOW:

Amie Cobby • P: 0410 116 413 • E: sydneywest.southwest@adenbrook.com.au

Images depicted on this site are for illustration purposes only. Facades and other images of homes and land estates may include optional upgrades, additional fixtures, finishes and home or estate features that are not included in the base price of the home or land package such as landscaping, feature tiling, decking, furnishing, feature lighting, pools, etc. Land estate pricing and plans are subject to developer guidelines and may vary at any time.

House Features:

- ✓ Builders range tiles & carpet throughout home
- ✓ Daiken Reverse Cycle Ducted Air Conditioning
- ✓ Westinghouse Cooktop, Oven and Dishwasher
- ✓ 2590mm Ceiling Upgrade to the Ground Floor Only
- ✓ 20mm Stone benchtop to the kitchen, bathroom and Ensuite.
- ✓ 2x Gas Points
- ✓ Flyscreens To all openable windows
- ✓ Much More...
- ✓ Coloured Concrete Driveway
- ✓ Tiling to the Alfresco and Portico
- ✓ Shower Niches
- ✓ 1020mm Entry Door
- ✓ R2 Walls and R4 Ceiling Insulation
- ✓ Soft-close drawers and doors to Kitchen and Bathrooms



ENQUIRE NOW:

Amie Cobby • P: 0410 116 413 • E: sydneywest.southwest@adenbrook.com.au

Images depicted on this site are for illustration purposes only. Facades and other images of homes and land estates may include optional upgrades, additional fixtures, finishes and home or estate features that are not included in the base price of the home or land package such as landscaping, feature tiling, decking, furnishing, feature lighting, pools, etc. Land estate pricing and plans are subject to developer guidelines and may vary at any time.