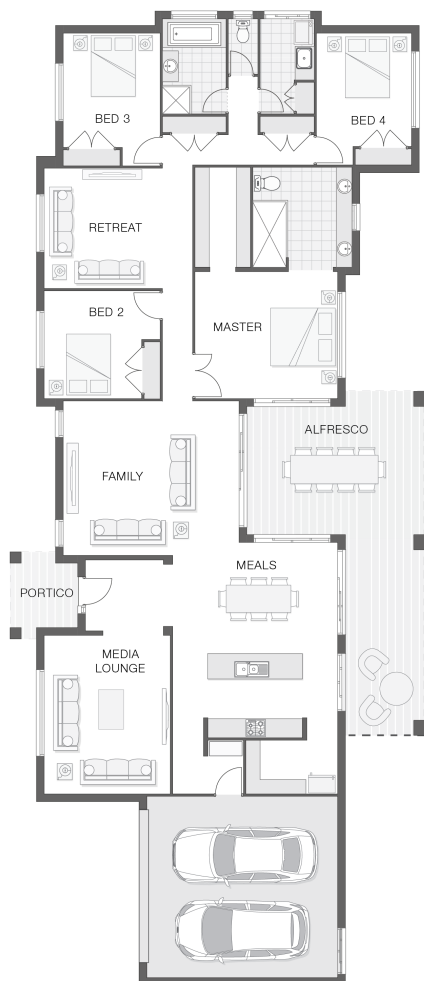


The Beacon - A

4 2 2 34 sq

Facade name: Bexley

House Plan:



LOT #12

Glen Valley Estate

Address: Glen Valley Estate, Glenreagh, 2450



2755 m²

House and land package price:

From **\$700,440***

About package:

This serene development in the hinterland of the Coffs Coast is ideally situated amongst the rolling green hills of the Orara Valley in the township of Glenreagh. Located centrally, Glenreagh is half an hour from Coffs Harbour. The Beacon home design offers a lavish and luxurious acreage property lifestyle that many can only dream about. With an expansive frontage and a large footprint, the Beacon is designed to make a dramatic first impression with its grand entrance and front facade.

Government Grant EXTENDED OFFER \$15,000 CASH BONUS AVAILABLE NOW!

What's included in your beautifully finished, high quality new home

- All Council Fees and Approvals with M Class Soil
- Full sarking wrap to treated timber frames and roof
- Insulation to walls and ceiling, flyscreens
- Carpet / tiles or vinyl flooring
- Recessed wet areas
- Westinghouse appliances
- Alfresco with recessed stacking sliding doors
- Drop-in laundry tub with cabinet and clothesline
- Full electrical layout with downlights and feature lighting and TV aerial
- Water tank, mailbox and concrete driveway

ULTIMATE UPGRADE BUNDLE FOR ONLY \$4990

EXTERNAL / INTERNAL

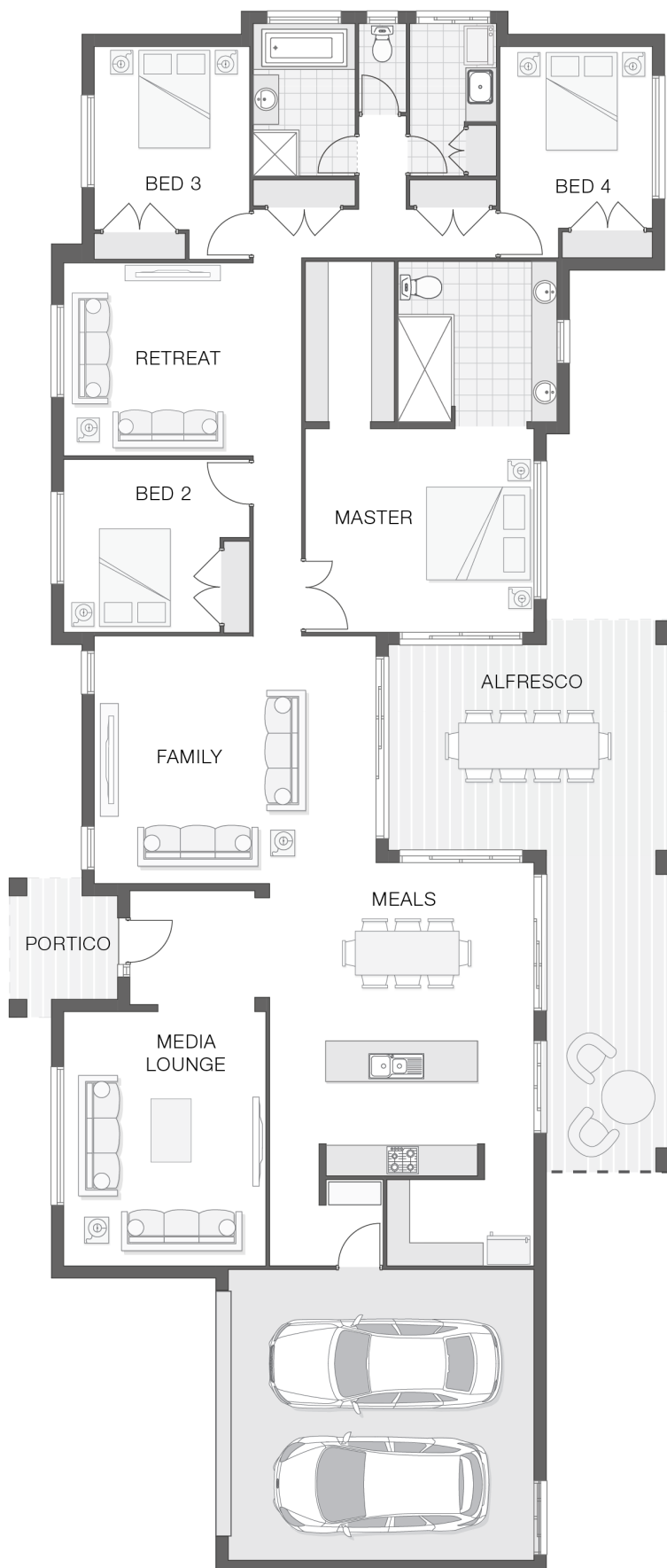
ENQUIRE NOW:

Niki Whelan • P: 0412 797 925 • E: coffs.display@adenbrook.com.au

Plans and designs depicted may change with facade selection. All drawings and photographs are for illustrative purposes only. This work is exclusively owned by AB Aust. IP Pty Ltd (ACN 163 575 077) and cannot be reproduced or copied wholly or in part, in any form without permission of AB Aust. IP Pty Ltd. Any prices in this document include GST, are subject to change without notice, relate only to the base house price and standard inclusions. Site costs will vary depending on site conditions, local Council requirements, estate guidelines and any other statutory requirements applicable. Adenbrook Homes does not have a hold on the block, this package is subject to land availability and you securing the land through the land agent directly. For more information please speak to one of our friendly New Home Consultants.

House Features:

- ✓ 20mm stone benchtops to kitchen
- ✓ Carpet and Tile or Vinyl floors; modern architraves 67mm x 18mm
- ✓ 900mm Cooker and Dishwasher
- ✓ Wideline aluminium windows, stacker and sliding doors, and flyscreens
- ✓ Three (3) coat Haymes low toxic internal paint system
- ✓ Overhead cupboards to kitchen, 4 shelves to Pantry and Linen
- ✓ 3000L rainwater tank with submersible pump
- ✓ Concrete Alfresco and Portico areas
- ✓ Flyscreens
- ✓ Letterbox and Clothesline
- ✓ Remote Controlled Garage Door + 2 remotes
- ✓ Ultimate upgrade bundle
- ✓ Square set ceilings to living area
- ✓ Site works allowance
- ✓ 2570mm high ceilings
- ✓ Double lock-up garage with remotes, mailbox, and clothesline
- ✓ 3 included facade options and complimentary window changes
- ✓ M class soil and 500mm fall over building platform
- ✓ Brushed Concrete Driveway
- ✓ Dishwasher
- ✓ Brick exterior, concrete tile roof, 45sqm grey concrete driveway



ENQUIRE NOW:

Niki Whelan • P: 0412 797 925 • E: coffs.display@adenbrook.com.au

Plans and designs depicted may change with facade selection. All drawings and photographs are for illustrative purposes only. This work is exclusively owned by AB Aust. IP Pty Ltd (ACN 163 575 077) and cannot be reproduced or copied wholly or in part, in any form without permission of AB Aust. IP Pty Ltd. Any prices in this document include GST, are subject to change without notice, relate only to the base house price and standard inclusions. Site costs will vary depending on site conditions, local Council requirements, estate guidelines and any other statutory requirements applicable. Adenbrook Homes does not have a hold on the block, this package is subject to land availability and you securing the land through the land agent directly. For more information please speak to one of our friendly New Home Consultants.