



House Plan:

LOT #534

Hayfield

Address: New Road, Ripley, 4306



315 m²

The Deakon - Brisbane

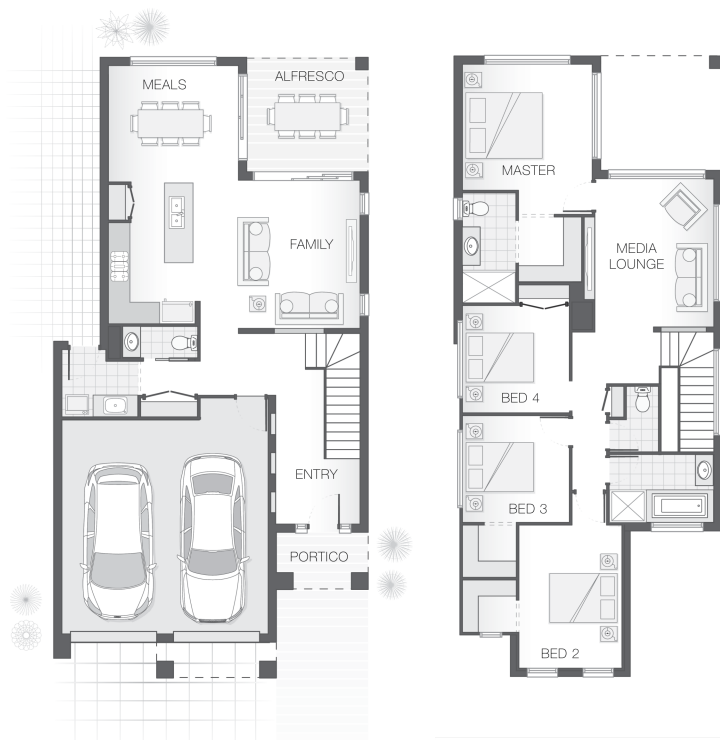
Package Price From

\$537,124*

4 2 2 25 sq

About package:

The Deakon home design is compact but punchy. With an outdoor alfresco area that merges seamlessly with the lower level kitchen, dining and living spaces the lower level is certain to accommodate the entire family. The upper floor provides a stylish layout with master retreat including ensuite and walk-in-robe sensibly separate from additional bedrooms and media room creating a feeling of privacy and space in a compact footprint.



ENQUIRE NOW:

Andrew Gallagher • P: 0457 607 182 • E: brisbane.display@adenbrook.com.au

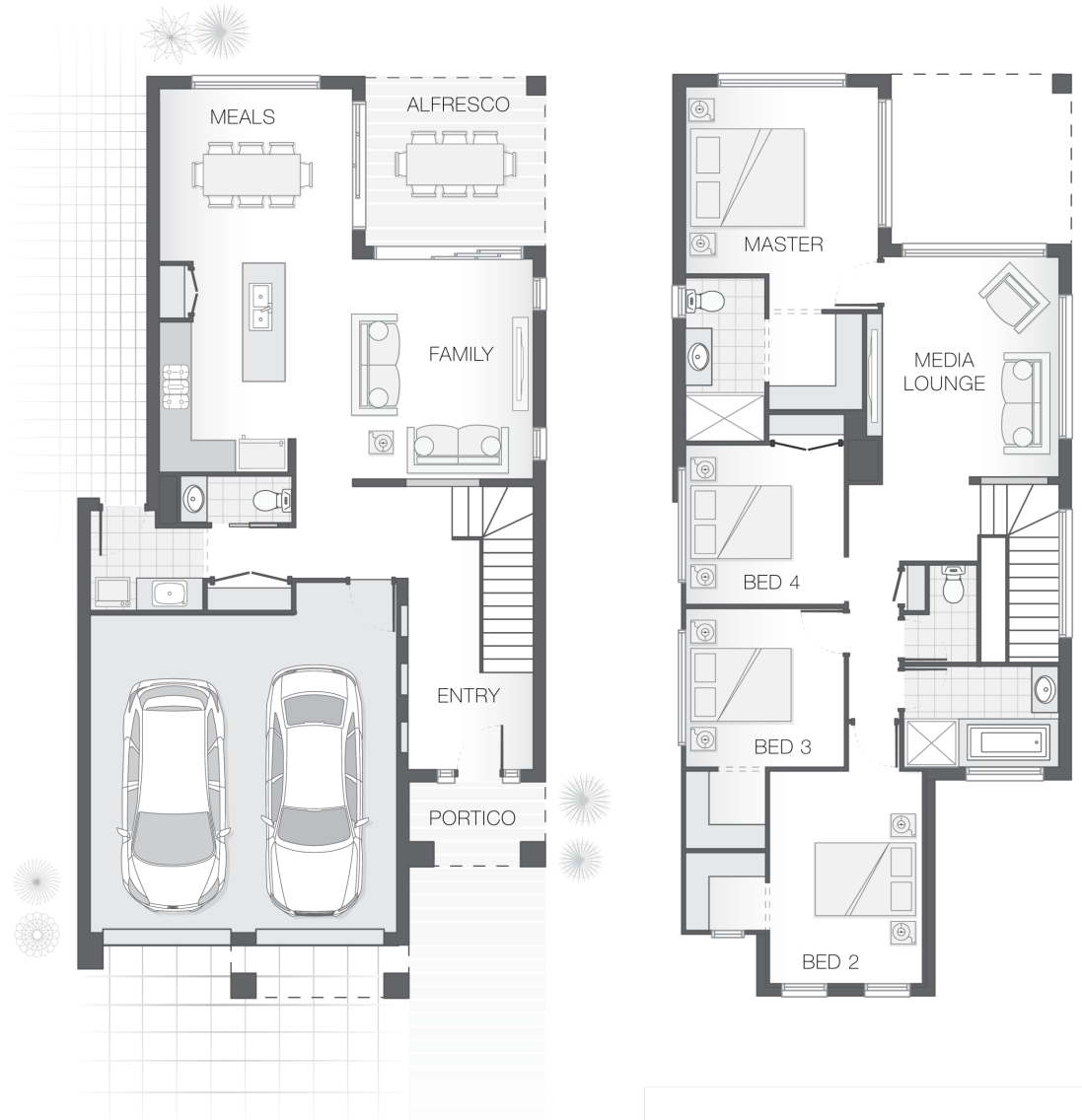
Images depicted on this site are for illustration purposes only. Facades and other images of homes and land estates may include optional upgrades, additional fixtures, finishes and home or estate features that are not included in the base price of the home or land package such as landscaping, feature tiling, decking, furnishing, feature lighting, pools, etc. Land estate pricing and plans are subject to developer guidelines and may vary at any time.

House Features:

- ✓ Tiling and carpet throughout
- ✓ TV antenna and clothesline
- ✓ Brick and rendered letterbox
- ✓ Exposed aggregate driveway and path
- ✓ Daikin ducted air conditioning
- ✓ Tiling and integral slab to alfresco
- ✓ 1020mm entry door
- ✓ Monier Atura Low-profile roof tiles or Colorbond roof
- ✓ 2590mm ceiling height to lower level
- ✓ Flyscreens to windows
- ✓ LED downlights
- ✓ Cold water tap to fridge space
- ✓ 20mm stone benchtops to kitchen, ensuite and bathrooms
- ✓ Westinghouse stainless steel dishwasher
- ✓ Externally ducted rangehood
- ✓ Soft-close drawers to kitchen, ensuite and bathrooms
- ✓ Shower niche to ensuite & bathroom
- ✓ \$15,000 First Home Owners Grant

Estate Features:

- ✓ Amberley District State School
- ✓ Winston Glades Shopping Centre
- ✓ Ipswich Railway Station



ENQUIRE NOW:

Andrew Gallagher • P: 0457 607 182 • E: brisbane.display@adenbrook.com.au

Images depicted on this site are for illustration purposes only. Facades and other images of homes and land estates may include optional upgrades, additional fixtures, finishes and home or estate features that are not included in the base price of the home or land package such as landscaping, feature tiling, decking, furnishing, feature lighting, pools, etc. Land estate pricing and plans are subject to developer guidelines and may vary at any time.