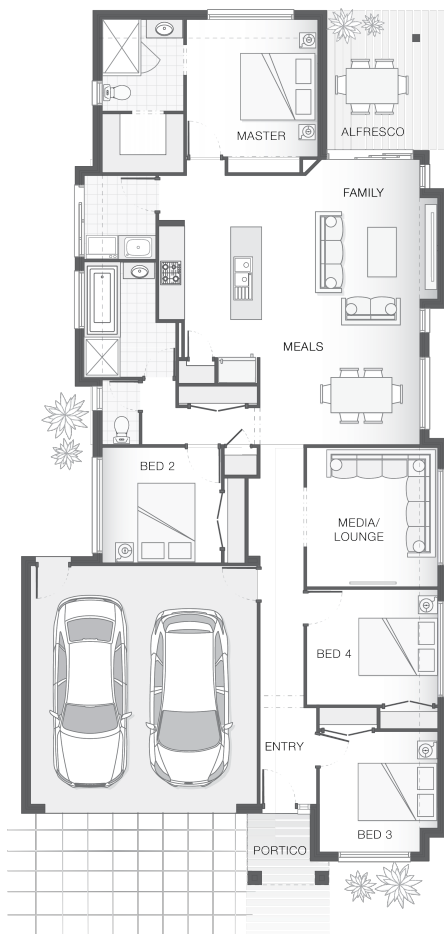




House Plan:



**LOT #43**

The Banks

Address: Raboki Crescent, Logan Reserve, 4133



**375 m<sup>2</sup>**

**The Saxon - C - Gold Coast**

Package Price From

4

2

2

198 m<sup>2</sup>

**\$463,679\***

**About package:**

This luxurious home has not yet been constructed and is available through award winning Adenbrook Homes Gold Coast. This is a very cost effective 'Lock- Up' Package to help you with you budget but also give you the option for upgrades if desired.

We are a locally owned and operated builder, backed by an award-winning National Brand franchise.

For a limited time, this package also includes our popular Ultimate Bundle Upgrade;

- Exposed aggregate driveway
- Ceiling Fans to alfresco and bedrooms (Excluding Master)
- Floor coverings (tiles & carpet)
- Stone benchtops to kitchen & bathrooms
- Stainless steel Westinghouse appliances
- LED downlights (Max of 20 Included)
- Feature Front facade render to our Standard Facade
- Exposed Aggregate Floor to Alfresco
- Soft close doors & drawers to kitchen
- 'M' Class Slab
- 2590mm High Ceilings to the Ground Floor
- H2 Termite Treated Frames
- Low Profile Roof Tiles
- NBN Connection
- Fencing, Landscaping, Letterbox are not included. (Ask our consultant for more info if you would like us to price apply these upgrades.)

**ENQUIRE NOW:**

Barrie Kluver • P: 0425516519 • E: [goldcoast@adenbrook.com.au](mailto:goldcoast@adenbrook.com.au)

Plans and designs depicted may change with facade selection. All drawings and photographs are for illustrative purposes only. This work is exclusively owned by AB Aust. IP Pty Ltd (ACN 163 575 077) and cannot be reproduced or copied wholly or in part, in any form without permission of AB Aust. IP Pty Ltd. Any prices in this document include GST, are subject to change without notice, relate only to the base house price and standard inclusions. Site costs will vary depending on site conditions, local Council requirements, estate guidelines and any other statutory requirements applicable. Adenbrook Homes does not have a hold on the block, this package is subject to land availability and you securing the land through the land agent directly. For more information please speak to one of our friendly New Home Consultants.