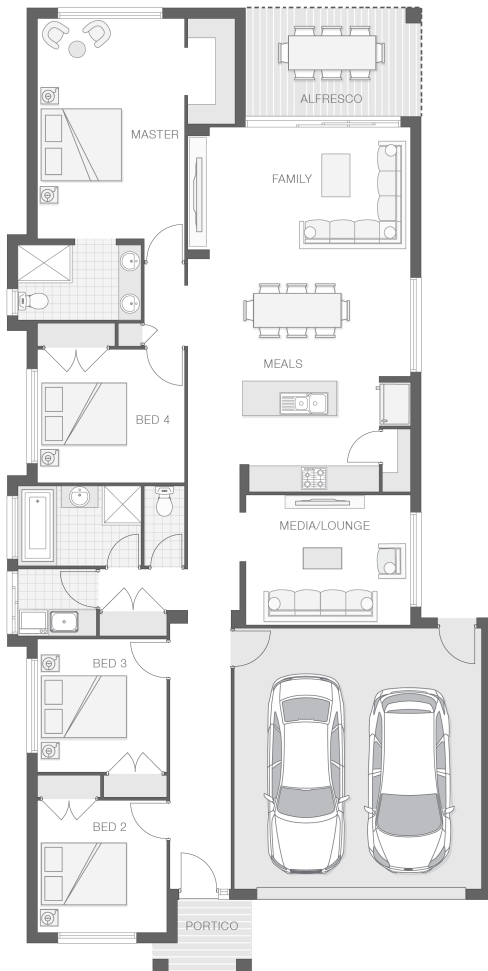


The Keppel

4 2 2 22 sq

Facade name: Bexley

House Plan:



LOT #12

The Riverside Estate

Address: The Riverside Estate, Macksville, 2447



687.3 m²

House and land package price:

From **\$536,890***

About package:

The Riverside Estate has 20 residential lots situated opposite the Nambucca River an exciting opportunity for buyers seeking a waterside lifestyle. The Keppel home design is modern and meticulous with attention to detail at every turn. The design essentially separates the home into individual zones to provide privacy and tranquility while also accommodating entertainment and family living.

What's included in your beautifully finished, high quality new home

- All Council Fees and Approvals with M Class Soil
- Full sarking wrap to treated timber frames and roof
- Insulation to walls and ceiling, flyscreens
- Carpet / tiles or vinyl flooring
- Recessed wet areas
- Westinghouse appliances
- Alfresco with recessed stacking sliding doors
- Drop-in laundry tub with cabinet and clothesline
- Full electrical layout with downlights and feature lighting and TV aerial
- Water tank, mailbox and concrete driveway

ULTIMATE UPGRADE BUNDLE FOR ONLY \$4990

EXTERNAL / INTERNAL

- Hume Savoy 1200mm hinged entry door
- 2570mm ceiling height with Square set finish
- 20mm stone benchtops, Dishwasher and 900mm freestanding cooker
- Square set ceiling to living area

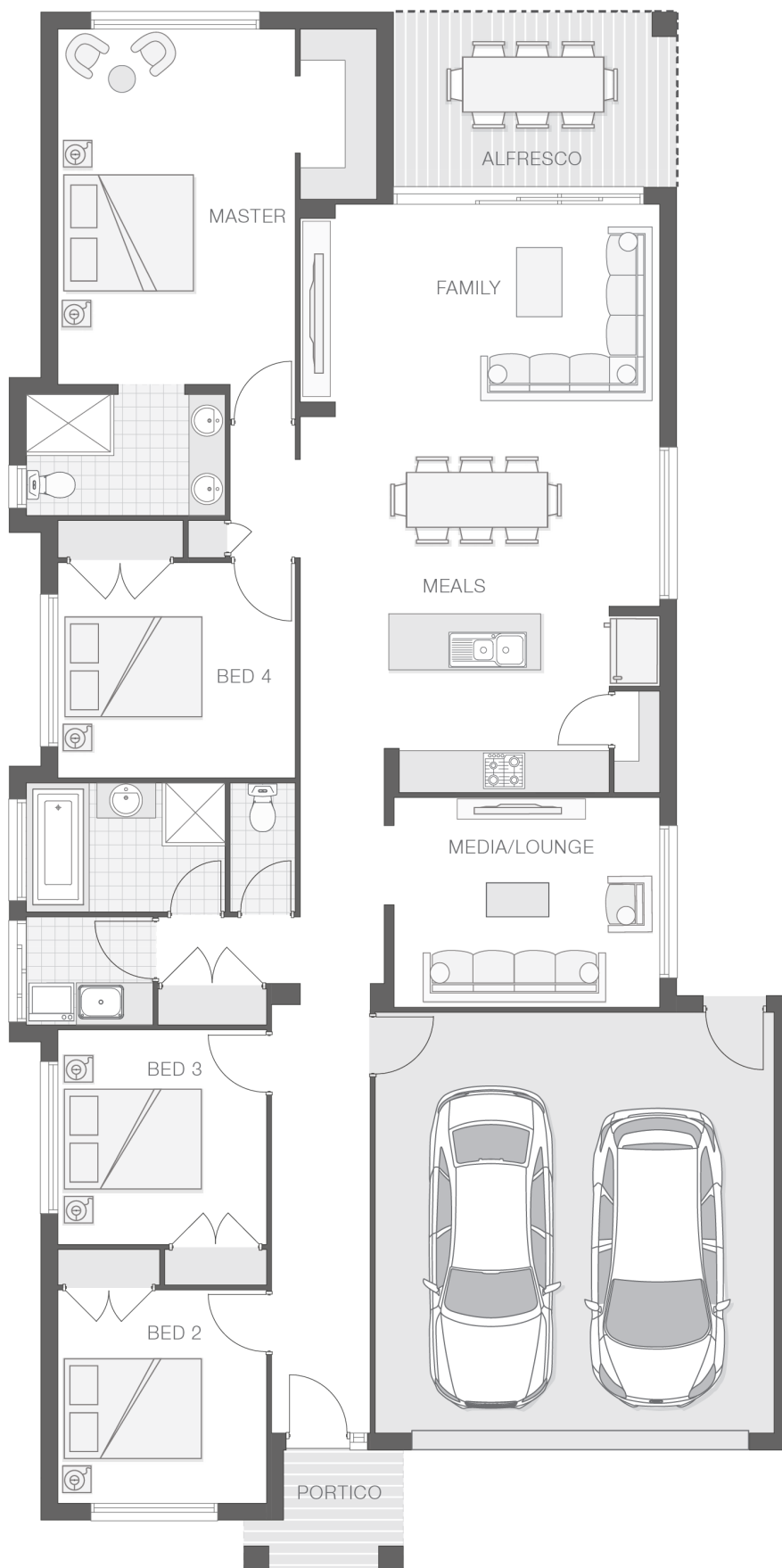
ENQUIRE NOW:

Niki Whelan • P: 0412 797 925 • E: coffs.display@adenbrook.com.au

Plans and designs depicted may change with facade selection. All drawings and photographs are for illustrative purposes only. This work is exclusively owned by AB Aust. IP Pty Ltd (ACN 163 575 077) and cannot be reproduced or copied wholly or in part, in any form without permission of AB Aust. IP Pty Ltd. Any prices in this document include GST, are subject to change without notice, relate only to the base house price and standard inclusions. Site costs will vary depending on site conditions, local Council requirements, estate guidelines and any other statutory requirements applicable. Adenbrook Homes does not have a hold on the block, this package is subject to land availability and you securing the land through the land agent directly. For more information please speak to one of our friendly New Home Consultants.

House Features:

- ✓ 20mm stone benchtops to kitchen
- ✓ Overhead cupboards to kitchen, 4 shelves to Pantry and Linen
- ✓ 900mm Cooker and Dishwasher
- ✓ Wideline aluminium windows, stacker and sliding doors, and flyscreens
- ✓ Carpet and Tile or Vinyl floors; modern architraves 67mm x 18mm
- ✓ 3000L rainwater tank with submersible pump
- ✓ Three (3) coat Haymes low toxic internal paint system
- ✓ Concrete Alfresco and Portico areas
- ✓ Flyscreens
- ✓ Letterbox and Clothesline
- ✓ Ultimate upgrade bundle
- ✓ Square set ceilings to living area
- ✓ 2570mm high ceilings
- ✓ 3 included facade options and complimentary window changes
- ✓ Double lock-up garage with remotes, mailbox, and clothesline
- ✓ BAL (Bushfire Attack Level) Allowance
- ✓ Dishwasher
- ✓ Brushed Concrete Driveway
- ✓ Quality Timber Look Flooring, Carpet and Tiles
- ✓ M class soil and 500mm fall over building platform



ENQUIRE NOW:

Niki Whelan • P: 0412 797 925 • E: coffs.display@adenbrook.com.au

Plans and designs depicted may change with facade selection. All drawings and photographs are for illustrative purposes only. This work is exclusively owned by AB Aust. IP Pty Ltd (ACN 163 575 077) and cannot be reproduced or copied wholly or in part, in any form without permission of AB Aust. IP Pty Ltd. Any prices in this document include GST, are subject to change without notice, relate only to the base house price and standard inclusions. Site costs will vary depending on site conditions, local Council requirements, estate guidelines and any other statutory requirements applicable. Adenbrook Homes does not have a hold on the block, this package is subject to land availability and you securing the land through the land agent directly. For more information please speak to one of our friendly New Home Consultants.