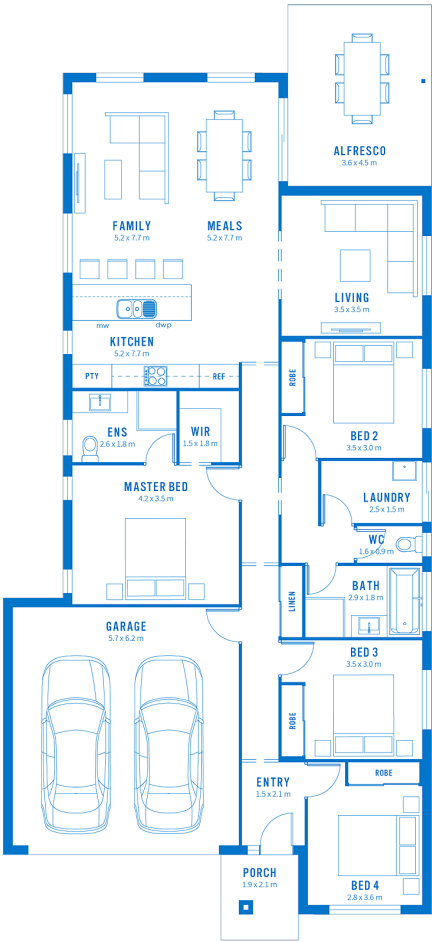




Floor Plan:



LOT #1036

Flagstone
Address: Jimboomba, 4280



435 m²

Chatsworth 207

Package Price From

4 2 2 204 m²

\$435,000*

About package:

An open plan kitchen, meals and family room combines with the alfresco for seamless living and entertaining. Or you could kick back and relax in the extra living room found just off the main area. The house also has four large bedrooms, and the master suite contains a walk-in robe and ensuite.

ENQUIRE NOW:

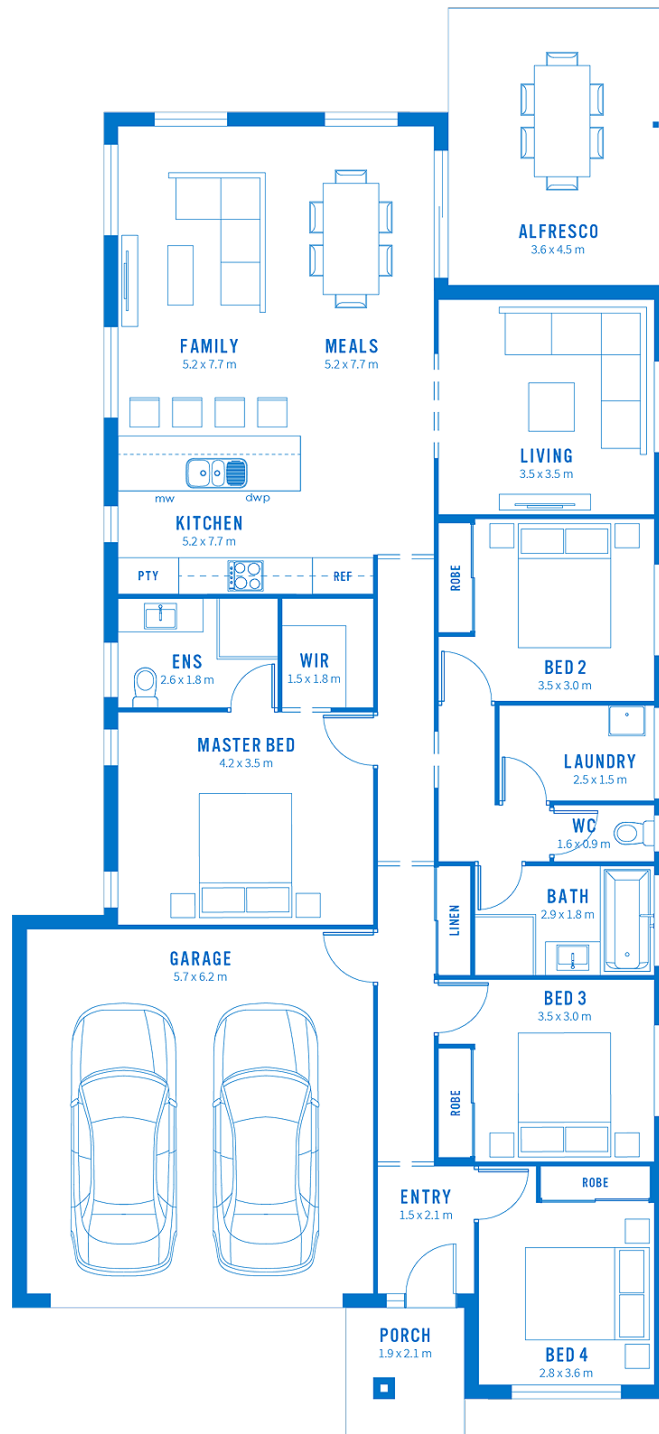
Jacinda Partridge • P: 0427750324 • E: Jacinda@buildtoday.com.au

House Features:

- ✓ 20mm Engineered Stone Bench Top to Kitchen and Vanities
- ✓ Stainless Steel Dishwasher
- ✓ 60cm Stainless Steel Appliances
- ✓ Chrome Sink Mixer with Stainless Steel Sink to Kitchen
- ✓ Ceramic Floor Tiles to Kitchen and Main Floors
- ✓ Carpet to Bedrooms and Second Living Area
- ✓ Two Reverse Cycle Split System Air-conditioners
- ✓ LED Downlights
- ✓ Ceiling Fans to Bedrooms and Living Areas
- ✓ 5 Star Electric Heat Pump Hot Water System
- ✓ Feature Garden, Turf and Fencing
- ✓ Exposed Aggregate Driveway, Porch and Laundry Pad
- ✓ Covercrete Alfresco Slab
- ✓ Letterbox and Wall Mounted Clothesline
- ✓ Panel Lift Garage Door with Two Remotes
- ✓ Security Screens
- ✓ SmartFilm Termite Barrier
- ✓ Window Coverings to All Windows (Except Wet Areas)

Estate Features:

- ✓ Flagstone State Community College
- ✓ Jimboomba Junction Shopping Centre
- ✓ Springfield Central Station



ENQUIRE NOW:

Jacinda Partridge • P: 0427750324 • E: Jacinda@buildtoday.com.au