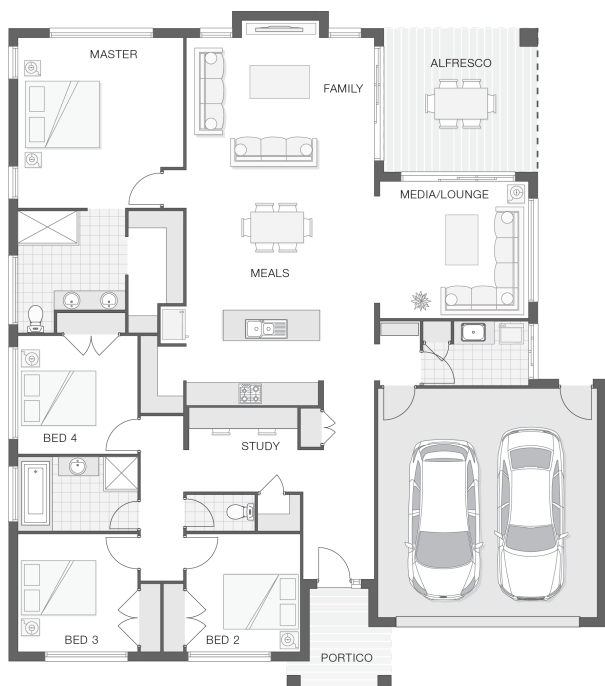


The Austin

4 2 2 26 sq

Facade name: Bexley

House Plan:



LOT #508

Woopi Beach Estate

Address: Woopi Beach Estate, Woolgoolga, 2456



785 m²

House and land package price:

From **\$774,890***

About package:

Woopi Beach Estate Stage 5 is now available with registration expected around Jan - Jun 2022. Offering a short stroll from each block to the Solitary Islands Marine Park where Hearn's Lake meets the Pacific Ocean, this land really is position perfect! At the Austin, modern family living is all about space to come together as a family and space for quiet time apart. The open living space combines with a rumpus room and alfresco to create a central living and entertaining area that can be used all year round.

What's included in your beautifully finished, high quality new home

- All Council Fees and Approvals with M Class Soil
- Full sarking wrap to treated timber frames and roof
- Insulation to walls and ceiling, flyscreens
- Carpet / tiles or vinyl flooring
- Recessed wet areas
- Westinghouse appliances
- Alfresco with recessed stacking sliding doors
- Drop-in laundry tub with cabinet and clothesline
- Full electrical layout with downlights and feature lighting and TV aerial
- Water tank, mailbox and concrete driveway

ULTIMATE UPGRADE BUNDLE FOR ONLY \$4990

EXTERNAL / INTERNAL

- Hume Savoy 1200mm hinged entry door
- 2570mm ceiling height with Square set finish

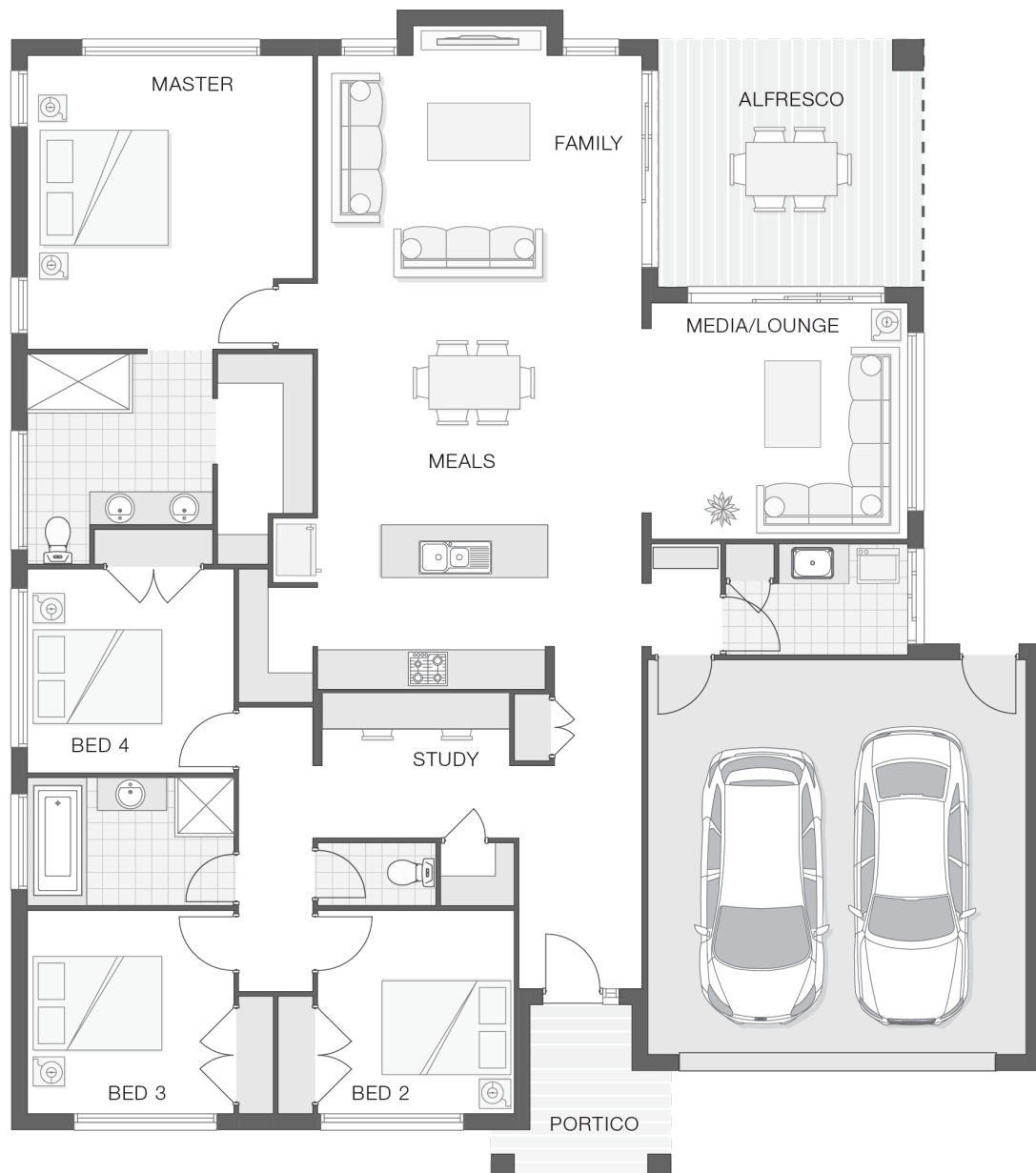
ENQUIRE NOW:

Niki Whelan • P: 0412 797 925 • E: coffs.display@adenbrook.com.au

Plans and designs depicted may change with facade selection. All drawings and photographs are for illustrative purposes only. This work is exclusively owned by AB Aust. IP Pty Ltd (ACN 163 575 077) and cannot be reproduced or copied wholly or in part, in any form without permission of AB Aust. IP Pty Ltd. Any prices in this document include GST, are subject to change without notice, relate only to the base house price and standard inclusions. Site costs will vary depending on site conditions, local Council requirements, estate guidelines and any other statutory requirements applicable. Adenbrook Homes does not have a hold on the block, this package is subject to land availability and you securing the land through the land agent directly. For more information please speak to one of our friendly New Home Consultants.

House Features:

- ✓ 20mm stone benchtops to kitchen
- ✓ 900mm Cooker and Dishwasher
- ✓ Carpet and Tile or Vinyl floors; modern architraves 67mm x 18mm
- ✓ Three (3) coat Haymes low toxic internal paint system
- ✓ Wideline aluminium windows, stacker and sliding doors, and flyscreens
- ✓ Overhead cupboards to kitchen, 4 shelves to Pantry and Linen
- ✓ 3 included facade options and complimentary window changes
- ✓ Obscure glazing to bathroom, ensuite and WC
- ✓ M class soil and 500mm fall over building platform
- ✓ LED downlights throughout and NBN provision
- ✓ Dishwasher
- ✓ Brushed Concrete Driveway
- ✓ Brick exterior, concrete tile roof, 45sqm grey concrete driveway
- ✓ Letterbox and Clothesline
- ✓ Flyscreens
- ✓ Concrete Alfresco and Portico areas
- ✓ 3000L rainwater tank with submersible pump
- ✓ Termite resistant "blue pine" framing and trusses and physical termite barriers
- ✓ Ultimate upgrade bundle
- ✓ 1200mm Hinged Wideline Aluminium Entry Door
- ✓ Square set ceilings to living area
- ✓ 2570mm high ceilings
- ✓ Site works allowance
- ✓ Quality Timber Look Flooring, Carpet and Tiles
- ✓ 27L gas instantaneous hot water system



ENQUIRE NOW:

Niki Whelan • P: 0412 797 925 • E: coffs.display@adenbrook.com.au

Plans and designs depicted may change with facade selection. All drawings and photographs are for illustrative purposes only. This work is exclusively owned by AB Aust. IP Pty Ltd (ACN 163 575 077) and cannot be reproduced or copied wholly or in part, in any form without permission of AB Aust. IP Pty Ltd. Any prices in this document include GST, are subject to change without notice, relate only to the base house price and standard inclusions. Site costs will vary depending on site conditions, local Council requirements, estate guidelines and any other statutory requirements applicable. Adenbrook Homes does not have a hold on the block, this package is subject to land availability and you securing the land through the land agent directly. For more information please speak to one of our friendly New Home Consultants.