



House Plan:

LOT #2128

Capestone

Address: Deacon Cr, Mango Hill, 4509



400 m²

The Ascot - A

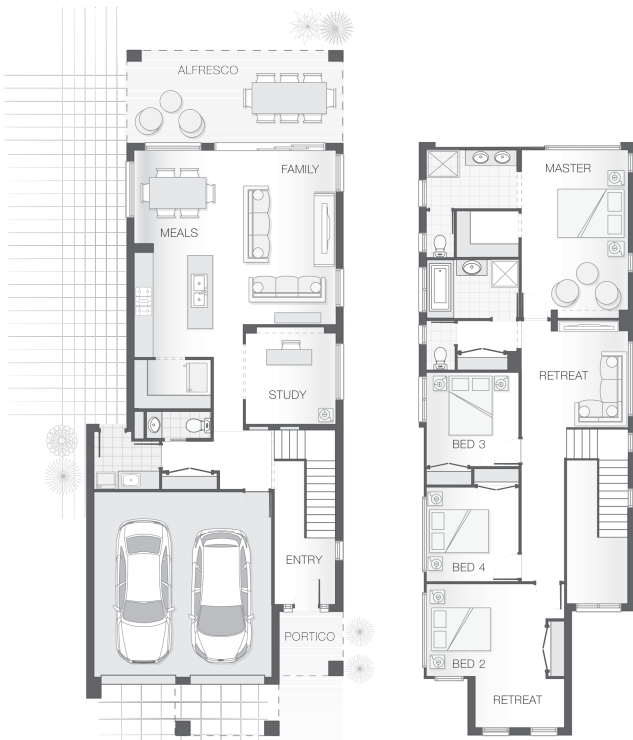
Package Price From

4 2 2 30 sq

\$844,145*

About package:

The Ascot home design is a compact yet abundant double storey design to suit a small lot. The lower level is completely dedicated to entertaining and family living with an open plan kitchen and dining area adjoining the alfresco that spans the width of the house and a bonus study room. The upper floor boasts an expansive master retreat with ensuite and walk-in-robe with option to build a balcony for private lake views.



ENQUIRE NOW:

Leigh Shepherd • P: 0407 771 521 • E: brisbane.display@adenbrook.com.au

Images depicted on this site are for illustration purposes only. Facades and other images of homes and land estates may include optional upgrades, additional fixtures, finishes and home or estate features that are not included in the base price of the home or land package such as landscaping, feature tiling, decking, furnishing, feature lighting, pools, etc. Land estate pricing and plans are subject to developer guidelines and may vary at any time.

Powered by **iBuildNew**

House Features:

- ✓ Tiling and carpet throughout
- ✓ TV antenna and clothesline
- ✓ Brick and rendered letterbox
- ✓ Exposed aggregate driveway and path
- ✓ Daikin ducted air conditioning
- ✓ Tiling and integral slab to alfresco
- ✓ 1020mm entry door
- ✓ Monier Atura Low-profile roof tiles or Colorbond roof
- ✓ 2590mm ceiling height to lower level
- ✓ Flyscreens to windows
- ✓ LED downlights
- ✓ Cold water tap to fridge space
- ✓ 20mm stone benchtops to kitchen, ensuite and bathrooms
- ✓ Westinghouse stainless steel dishwasher
- ✓ Externally ducted rangehood
- ✓ Soft-close drawers to kitchen, ensuite and bathrooms
- ✓ Shower niche to ensuite & bathroom
- ✓ \$15,000 First Home Owners Grant

Estate Features:

- ✓ Mango Hill State School
- ✓ Mango Hill Market Place
- ✓ Mango Hill East Station
- ✓ Located in Mango Hill, within the picturesque Moreton Bay Region just north of Brisbane
- ✓ only a couple of minutes' walk to everything you could ever need. Local shops, parks and the 12.8ha central lake is on your doorstep.
- ✓ Minutes from the Bruce Highway with the Sunshine Coast less than an hour away
- ✓ Only minutes to Moreton Bay and the beaches of Scarborough and Redcliffe Peninsular
- ✓ Only 40 minutes from the Brisbane CBD
- ✓ Only a couple of minutes' walk to everything you could ever need
- ✓ Local shops, parks and the 12.8ha central lake is on your doorstep
- ✓ Shops, Parks and a 12.8ha



ENQUIRE NOW:

Leigh Shepherd • P: 0407 771 521 • E: brisbane.display@adenbrook.com.au

Images depicted on this site are for illustration purposes only. Facades and other images of homes and land estates may include optional upgrades, additional fixtures, finishes and home or estate features that are not included in the base price of the home or land package such as landscaping, feature tiling, decking, furnishing, feature lighting, pools, etc. Land estate pricing and plans are subject to developer guidelines and may vary at any time.