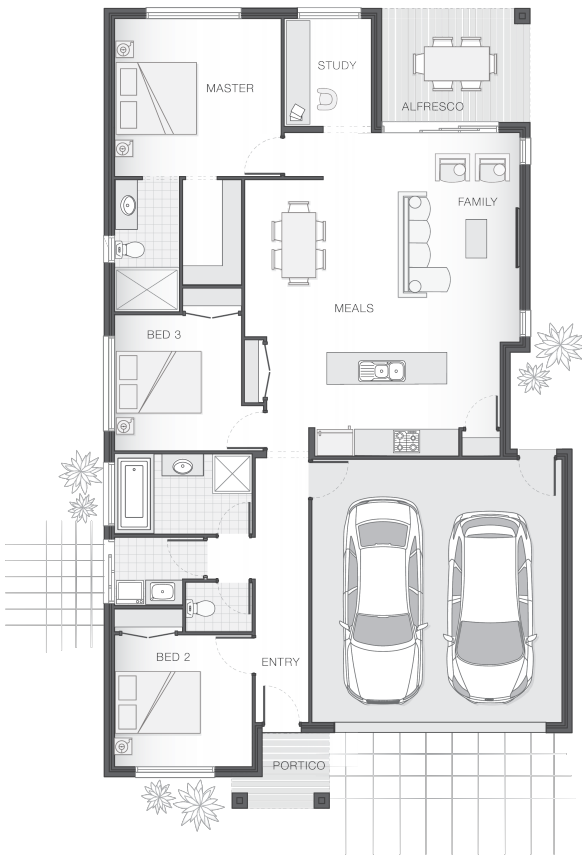


# The Brampton - Adenbrook

3 2 2 19 sq

Facade name: Byron

## House Plan:



## LOT #12

Sunburst Estate

Address: Diesel Close, Teralba, 2284



450 m<sup>2</sup>

House and land package price:

From **\$699,369\***

## About package:

### INCLUSIONS:

- Custom Brampton design
- Daikin Ducted Air Conditioning
- 20mm Stone benchtops to kitchen, main bathroom and ensuite
- Shower niche to bathroom and ensuite
- Australian Custom Made Kitchen Cabinetry and Bathroom Vanities
- Cabinetry to Walk in Pantry
- Soft Close to Bathroom and Laundry Cupboards
- Soft Close to Kitchen Drawers and Cupboards
- Westinghouse 900mm Oven and stainless steel appliances
- Concrete Driveway Allowance
- Quality flooring throughout including carpet with 10mm underlay
- Flyscreens to all openable windows
- Remote Controlled garage door + 2 remotes
- Slab allowance for Alfresco and Portico
- Tiled Alfresco and Portico
- Site Work Allowance\*
- Clipsal iconic ultramodern range switch gear
- Double GPO's throughout
- All connections and services
- H2 90mm treated pine frames
- BASIX including water tank
- Modern Haven facade included

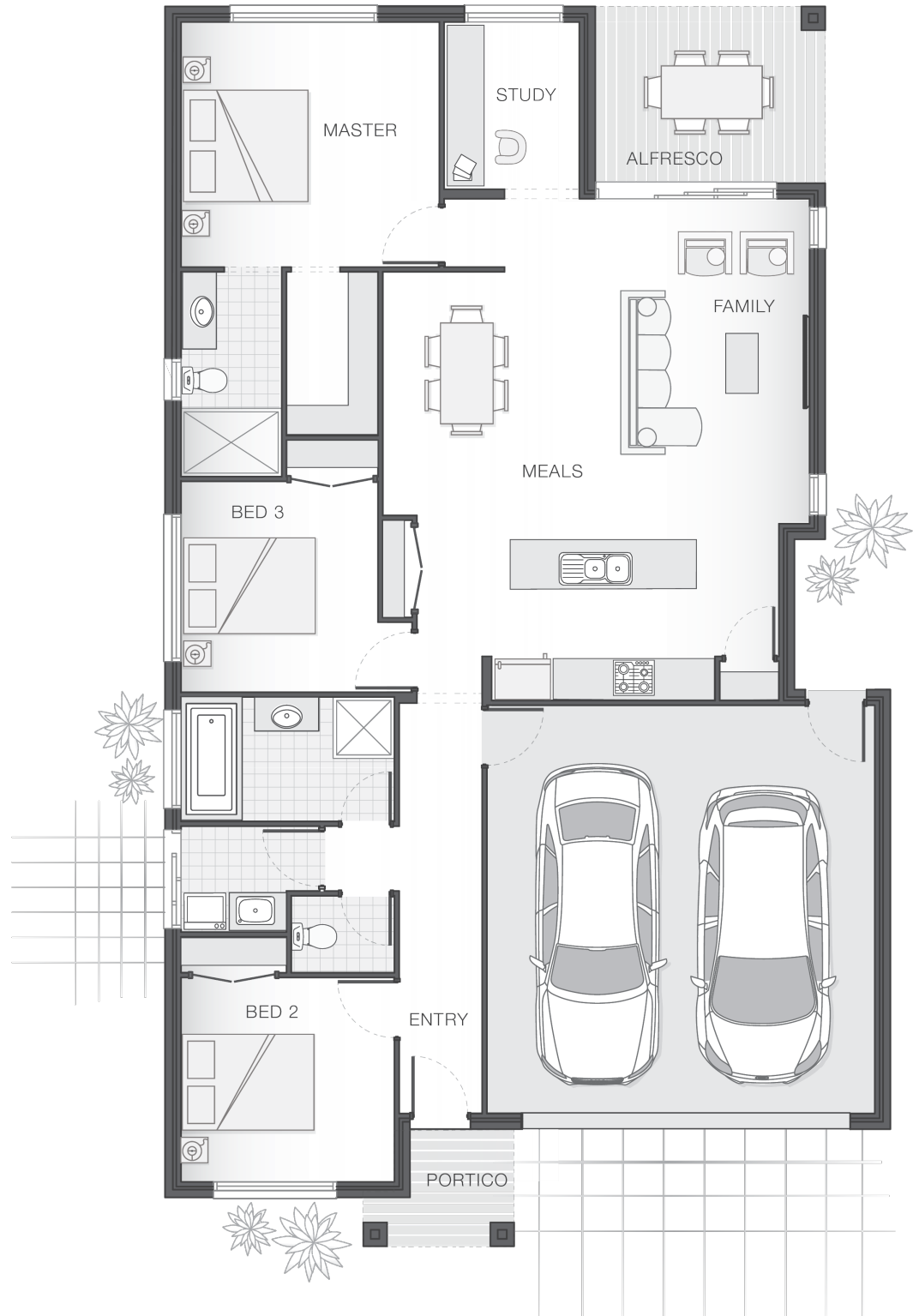
## ENQUIRE NOW:

Paul James • P: 0418 656 366 • E: [Hawkesbury.bluemountains@adenbrook.com.au](mailto:Hawkesbury.bluemountains@adenbrook.com.au)

Images depicted on this site are for illustration purposes online. Facades and other images of homes and land estates may include optional upgrades, additional fixtures, finishes and home or estate features that are not included in the base prices of the home or land package such as landscaping, feature tiling, decking, furniture, feature lighting, pools, etc. Land estate pricing and plans are subject to developer guidelines and may vary at any time.

## House Features:

- ✓ Ultimate Bundle
- ✓ Floor Coverings
- ✓ Ducted Air Conditioning
- ✓ Stone Benchtops to Kitchen and Bathrooms\*
- ✓ Flyscreens
- ✓ Shower Niches to Ensuite & Bathroom
- ✓ Covered Concrete & Tiled Alfresco area
- ✓ Concrete Driveway Allowance
- ✓ Double GPO's Throughout
- ✓ Stainless Steel Appliances
- ✓ Basix
- ✓ 3 Phase Underground Power
- ✓ Termite Barrier Protection
- ✓ Soft Close Drawers & Doors



## ENQUIRE NOW:

Paul James • P: 0418 656 366 • E: [Hawkesbury.bluemountains@adenbrook.com.au](mailto:Hawkesbury.bluemountains@adenbrook.com.au)