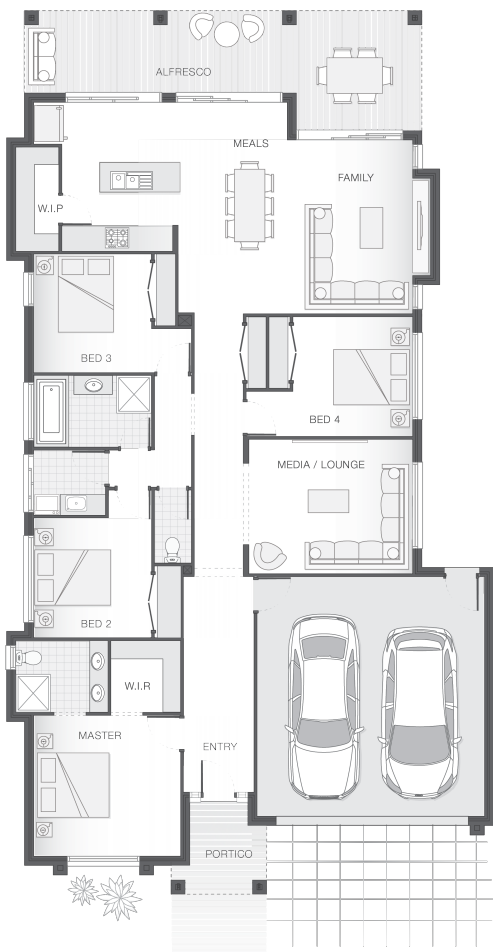




House Plan:



LOT #20

The Bikeway Estate

Address: Loch Way, Brassall, 4305



672 m²

The Isla - Brisbane

Package Price From

4 2 2 24 sq

\$509,429*

About package:

The Isla home design is sophisticated and stylish, offering all the modern features that you need to relax. The outdoor entertaining area runs the width of the home and flawlessly integrates with the family room, meals area and generous kitchen complete with butler's pantry creating an oversized entertainers delight.

- H1 Slab Included
- 2590mm high Ceilings throughout
- Carpets/Tiles or Carpets/Timber Laminate - The choice is yours at no extra cost.
- 20mm Stone Benchtops to Kitchen, Bathroom & Ensuite
- LED Downlights throughout
- Tiled undercover Alfresco area
- Driveway
- Clothesline
- Letterbox
- Fully ducted Air Conditioning
- Flyscreen's to all windows
- Tiled recessed Niches to both Showers
- Soft close drawers and doors to Kitchen & Bathrooms
- Ceiling fans throughout including Alfresco.

ENQUIRE NOW:

Leigh Shepherd • P: 0407 771 521 • E: brisbane.display@adenbrook.com.au

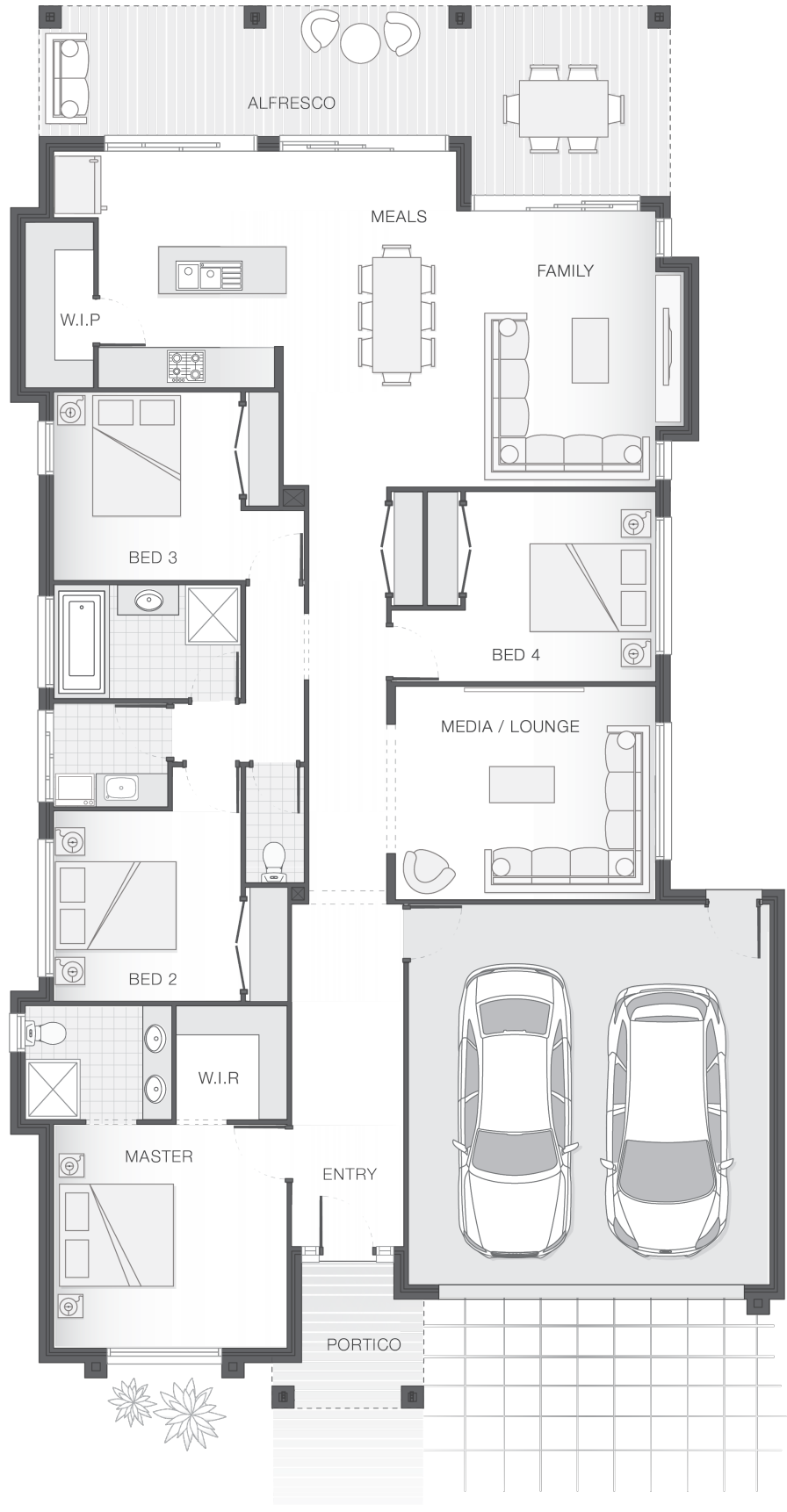
Images depicted on this site are for illustration purposes online. Facades and other images of homes and land estates may include optional upgrades, additional fixtures, finishes and home or estate features that are not included in the base prices of the home or land package such as landscaping, feature tiling, decking, furniture, feature lighting, pools, etc. Land estate pricing and plans are subject to developer guidelines and may vary at any time.

House Features:

- ✓ Tiling and carpet throughout
- ✓ TV antenna and clothesline
- ✓ Brick and rendered letterbox
- ✓ Exposed aggregate driveway and path
- ✓ Daikin ducted air conditioning
- ✓ Tiling and integral slab to alfresco
- ✓ 1020mm entry door
- ✓ Monier Atura Low-profile roof tiles or Colorbond roof
- ✓ 2590mm ceiling height to lower level
- ✓ Flyscreens to windows
- ✓ LED downlights
- ✓ Cold water tap to fridge space
- ✓ 20mm stone benchtops to kitchen, ensuite and bathrooms
- ✓ Westinghouse stainless steel dishwasher
- ✓ Externally ducted rangehood
- ✓ Soft-close drawers to kitchen, ensuite and bathrooms
- ✓ Shower niche to ensuite & bathroom
- ✓ \$15,000 First Home Owners Grant

Estate Features:

- ✓ • Ipswich Grammar Sports Field about: 1.5km
- ✓ • Early Bird Childhood Learning Centre about: 1.7km
- ✓ • Ipswich High: about 2.4km
- ✓ • St. Edmunds College: about 4.4km
- ✓ • Brassall Shopping Centre: about 1.9.km
- ✓ • Riverlink Shopping Centre: about 5.7Km
- ✓ Bus Stop: about 800m
- ✓ Train Station: about 3.9km
- ✓ Sutton Park about: 1.6km



ENQUIRE NOW:

Leigh Shepherd • P: 0407 771 521 • E: brisbane.display@adenbrook.com.au

Images depicted on this site are for illustration purposes online. Facades and other images of homes and land estates may include optional upgrades, additional fixtures, finishes and home or estate features that are not included in the base prices of the home or land package such as landscaping, feature tiling, decking, furniture, feature lighting, pools, etc. Land estate pricing and plans are subject to developer guidelines and may vary at any time.