



House Plan:

**LOT #88B**

Fig Tree Circuit

Address: Palmeri Street, Caboolture, 4510



**450 m<sup>2</sup>**

**The Capestone**

Package Price From

4

2

2

26 sq

**\$570,829\***

**About package:**

The Capestone home design is the perfect balance between entertaining and relaxation.

This Home & Land Package Includes the Following with No More to Pay!....

Capestone Floor Plan with the Oakley Facade as per Main image

2590mm high Ceilings throughout

Carpets/Tiles or Carpets/Timber Laminate - The choice is yours at no extra cost.

20mm Stone Benchtops to Kitchen, Bathroom & Ensuite

LED Downlights throughout

Tiled undercover Alfresco area

Driveway

Clothesline

Letterbox

Fully ducted Air Conditioning

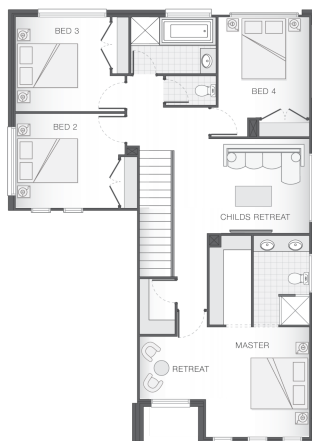
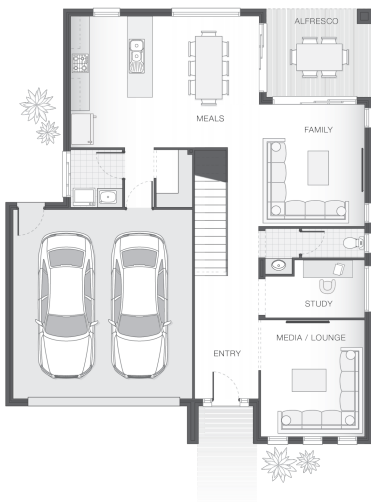
Flyscreens to all windows

Tiled recessed Niches to both Showers

Soft close drawers and doors to Kitchen & Bathrooms

Roller blinds to all Windows.

Landscaping turf & garden beds



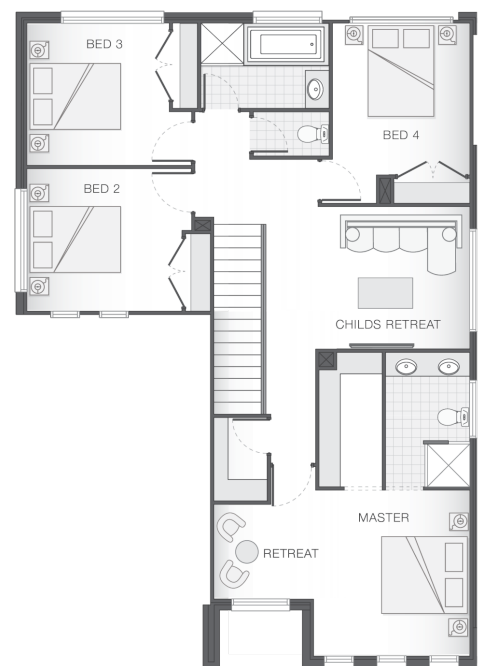
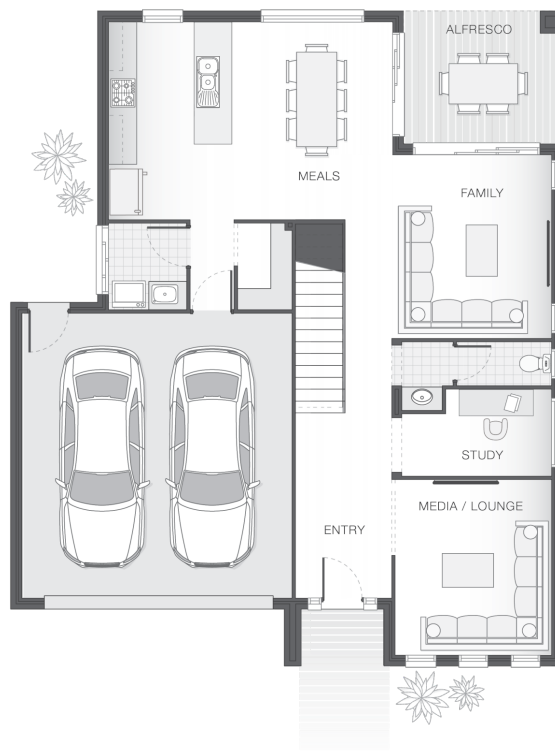
**ENQUIRE NOW:**

Martin Donovan • P: 0456 624 304 • E: [brisbane.display@adenbrook.com.au](mailto:brisbane.display@adenbrook.com.au)

Plans and designs depicted may change with facade selection. All drawings and photographs are for illustrative purposes only. This work is exclusively owned by AB Aust. IP Pty Ltd (ACN 163 575 077) and cannot be reproduced or copied wholly or in part, in any form without permission of AB Aust. IP Pty Ltd. Any prices in this document include GST, are subject to change without notice, relate only to the base house price and standard inclusions. Site costs will vary depending on site conditions, local Council requirements, estate guidelines and any other statutory requirements applicable. Adenbrook Homes does not have a hold on the block, this package is subject to land availability and you securing the land through the land agent directly. For more information please speak to one of our friendly New Home Consultants.

### House Features:

- ✓ Tiling and carpet throughout
- ✓ TV antenna and clothesline
- ✓ Brick and rendered letterbox
- ✓ Exposed aggregate driveway and path
- ✓ Daikin ducted air conditioning
- ✓ Tiling and integral slab to alfresco
- ✓ 1020mm entry door
- ✓ Monier Atura Low-profile roof tiles or Colorbond roof
- ✓ 2590mm ceiling height to lower level
- ✓ Flyscreens to windows
- ✓ LED downlights
- ✓ Cold water tap to fridge space
- ✓ 20mm stone benchtops to kitchen, ensuite and bathrooms
- ✓ Westinghouse stainless steel dishwasher
- ✓ Externally ducted rangehood
- ✓ Soft-close drawers to kitchen, ensuite and bathrooms
- ✓ Shower niche to ensuite & bathroom



### ENQUIRE NOW:

Martin Donovan • P: 0456 624 304 • E: [brisbane.display@adenbrook.com.au](mailto:brisbane.display@adenbrook.com.au)

Plans and designs depicted may change with facade selection. All drawings and photographs are for illustrative purposes only. This work is exclusively owned by AB Aust. IP Pty Ltd (ACN 163 575 077) and cannot be reproduced or copied wholly or in part, in any form without permission of AB Aust. IP Pty Ltd. Any prices in this document include GST, are subject to change without notice, relate only to the base house price and standard inclusions. Site costs will vary depending on site conditions, local Council requirements, estate guidelines and any other statutory requirements applicable. Adenbrook Homes does not have a hold on the block, this package is subject to land availability and you securing the land through the land agent directly. For more information please speak to one of our friendly New Home Consultants.