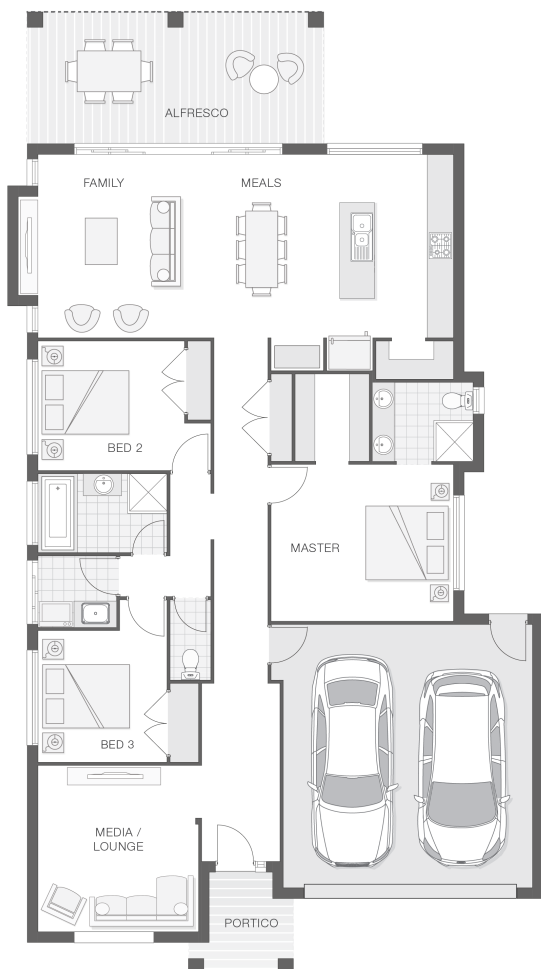


The Isla - D

3 2 2 23 sq

Facade name: Arden

House Plan:



LOT #18

Macksville Gardens Estate

Address: Macksville Gardens Estate, Macksville, 2447



608 m²

House and land package price:

From **\$537,350***

About package:

The exclusive and strictly limited land release at Macksville Gardens Estate comprises 45 residential land lots in a captivating and convenient setting. The Isla home design is sophisticated and stylish, offering all the modern features that you need to relax, entertain and enjoy! The outdoor entertaining area runs the width of the home and flawlessly integrates with the family room, meals area and generous kitchen complete with butler's pantry creating an oversized entertainers delight.

What's included in your beautifully finished, high quality new home

- All Council Fees and Approvals with M Class Soil
- Full sarking wrap to treated timber frames and roof
- Insulation to walls and ceiling, flyscreens
- Carpet / tiles or vinyl flooring
- Recessed wet areas
- Westinghouse appliances
- Alfresco with recessed stacking sliding doors
- Drop-in laundry tub with cabinet and clothesline
- Full electrical layout with downlights and feature lighting and TV aerial
- Water tank, mailbox and concrete driveway

ULTIMATE UPGRADE BUNDLE FOR ONLY \$4990

EXTERNAL / INTERNAL

- Hume Savoy 1200mm hinged entry door
- 2570mm ceiling height with Square set finish
- 20mm stone benchtops, Dishwasher and 900mm freestanding cooker

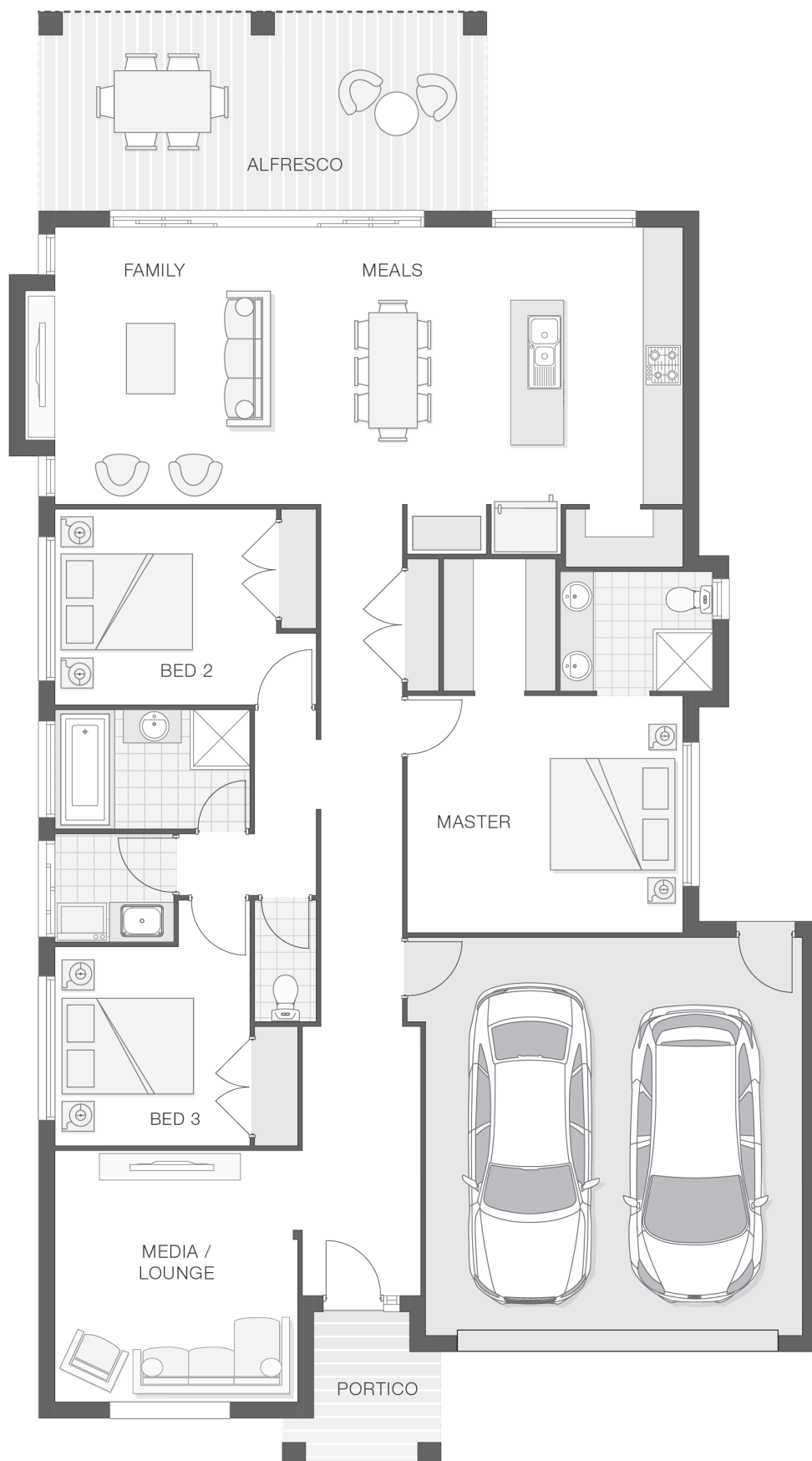
ENQUIRE NOW:

Niki Whelan • P: 0412 797 925 • E: coffs.display@adenbrook.com.au

Plans and designs depicted may change with facade selection. All drawings and photographs are for illustrative purposes only. This work is exclusively owned by AB Aust. IP Pty Ltd (ACN 163 575 077) and cannot be reproduced or copied wholly or in part, in any form without permission of AB Aust. IP Pty Ltd. Any prices in this document include GST, are subject to change without notice, relate only to the base house price and standard inclusions. Site costs will vary depending on site conditions, local Council requirements, estate guidelines and any other statutory requirements applicable. Adenbrook Homes does not have a hold on the block, this package is subject to land availability and you securing the land through the land agent directly. For more information please speak to one of our friendly New Home Consultants.

House Features:

- ✓ Carpet and Tile or Vinyl floors; modern architraves 67mm x 18mm
- ✓ 900mm Cooker and Dishwasher
- ✓ 20mm stone benchtops to kitchen
- ✓ Overhead cupboards to kitchen, 4 shelves to Pantry and Linen
- ✓ Wideline aluminium windows, stacker and sliding doors, and flyscreens
- ✓ Three (3) coat Haymes low toxic internal paint system
- ✓ Letterbox and Clothesline
- ✓ Flyscreens
- ✓ Concrete Alfresco and Portico areas
- ✓ Termite resistant "blue pine" framing and trusses and physical termite barriers
- ✓ 3000L rainwater tank with submersible pump
- ✓ Double lock-up garage with remotes, mailbox, and clothesline
- ✓ 3 included facade options and complimentary window changes
- ✓ Dishwasher
- ✓ Brushed Concrete Driveway
- ✓ Ultimate upgrade bundle
- ✓ 1200mm Hinged Wideline Aluminium Entry Door
- ✓ Site works allowance
- ✓ 2570mm high ceilings
- ✓ Quality Timber Look Flooring, Carpet and Tiles
- ✓ Square set ceilings to living area



ENQUIRE NOW:

Niki Whelan • P: 0412 797 925 • E: coffs.display@adenbrook.com.au

Plans and designs depicted may change with facade selection. All drawings and photographs are for illustrative purposes only. This work is exclusively owned by AB Aust. IP Pty Ltd (ACN 163 575 077) and cannot be reproduced or copied wholly or in part, in any form without permission of AB Aust. IP Pty Ltd. Any prices in this document include GST, are subject to change without notice, relate only to the base house price and standard inclusions. Site costs will vary depending on site conditions, local Council requirements, estate guidelines and any other statutory requirements applicable. Adenbrook Homes does not have a hold on the block, this package is subject to land availability and you securing the land through the land agent directly. For more information please speak to one of our friendly New Home Consultants.