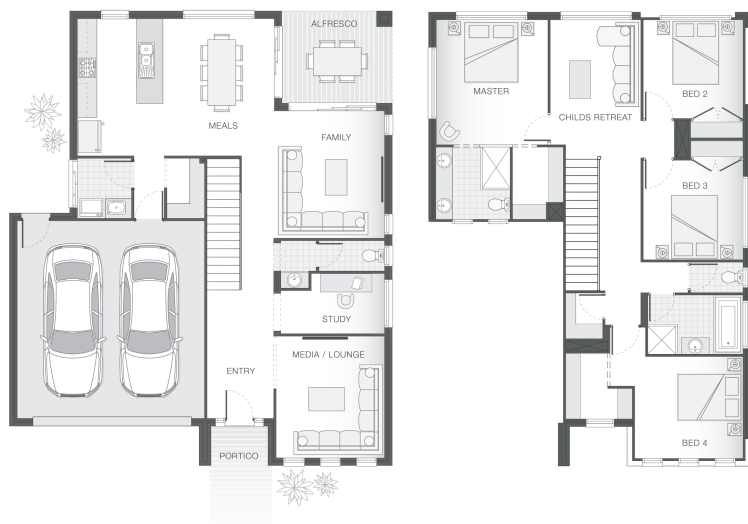


The Capestone - A

4 2 2 26 sq

Facade name: Miller

House Plan:



LOT #218

Bingara Gorge

Address: Proposed Road (CNR), Wilton, 2571



458.9 m²

House and land package price:

Fixed **\$899,900***

About package:

Adenbrook Homes offer this amazing, fixed price House and Land Package located in the highly sought-after estate of Bingara Gorge, Wilton.

Set on a 458.9m² block of land due to register Mid 2022, we have coupled it with our Capestone A home design.

This House and Land Package includes:

- * 100% Fixed Site Costs
- * Basic Package Included
- * Builders range tiles & carpet throughout home
- * Tiling to the Alfresco and Portico
- * Coloured Concrete Driveway
- * Daikin Reverse Cycle Ducted Air Con.

PLUS our fantastic Ultimate Upgrade Bundle including:

- * 2590mm ceiling heights throughout (ground floor only to double storey homes)
- * shower Niche to Bathroom and Ensuite
- * Monier Atura Low Profile Roof Tiles
- * 1020mm Entry Door
- * Flyscreens to all openable windows
- * 20mm Stone benchtop to the kitchen, bathroom and Ensuite.
- * Westinghouse Dishwasher

Don't miss out, enquire today to find out how to make this dream a reality!

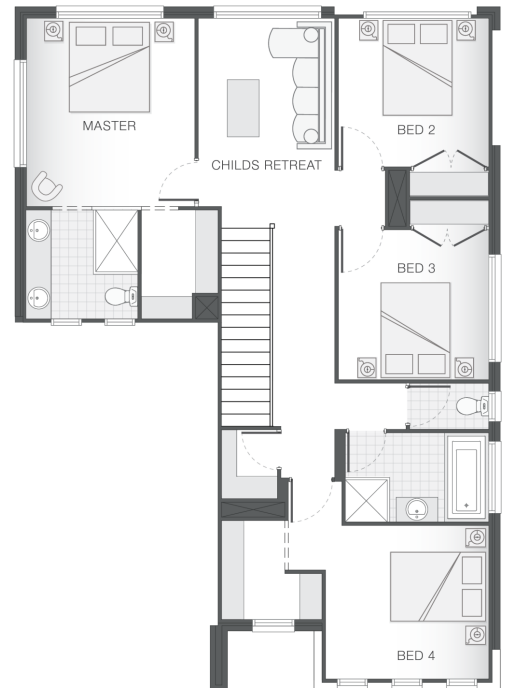
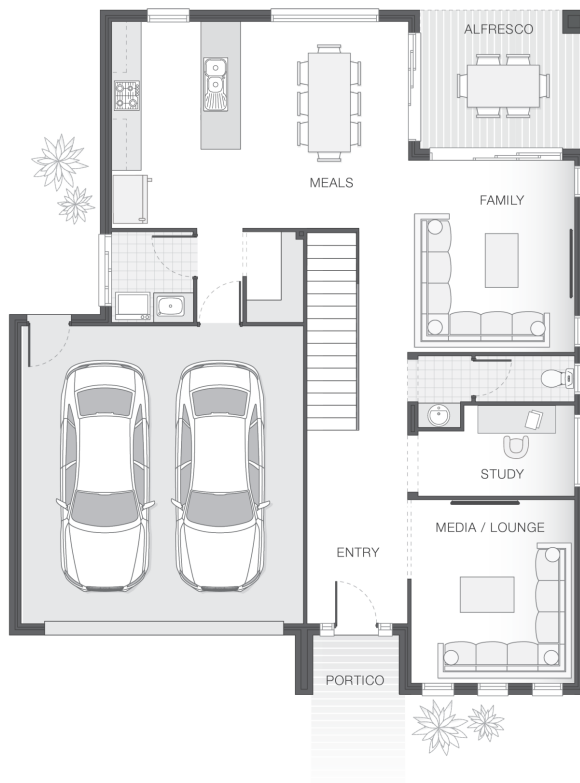
ENQUIRE NOW:

Jillian Stokes • P: 0415 301 615 • E: greaterwollongong@adenbrook.com.au

Images depicted on this site are for illustration purposes only. Facades and other images of homes and land estates may include optional upgrades, additional fixtures, finishes and home or estate features that are not included in the base price of the home or land package such as landscaping, feature tiling, decking, furnishing, feature lighting, pools, etc. Land estate pricing and plans are subject to developer guidelines and may vary at any time.

House Features:

- ✓ Tiling to the Alfresco and Portico
- ✓ 1020mm Entry Door
- ✓ Shower Niches
- ✓ R2 Walls and R4 Ceiling Insulation
- ✓ Soft-close drawers and doors to Kitchen and Bathrooms
- ✓ Coloured Concrete Driveway
- ✓ 20mm Stone benchtop to the kitchen, bathroom and Ensuite.
- ✓ 2x Gas Points
- ✓ Flyscreens To all openable windows
- ✓ Much More...
- ✓ Builders range tiles & carpet throughout home
- ✓ Daiken Reverse Cycle Ducted Air Conditioning
- ✓ Westinghouse Cooktop, Oven and Dishwasher
- ✓ 2590mm Ceiling Upgrade to the Ground Floor Only



ENQUIRE NOW:

Jillian Stokes • P: 0415 301 615 • E: greaterwollongong@adenbrook.com.au

Images depicted on this site are for illustration purposes only. Facades and other images of homes and land estates may include optional upgrades, additional fixtures, finishes and home or estate features that are not included in the base price of the home or land package such as landscaping, feature tiling, decking, furnishing, feature lighting, pools, etc. Land estate pricing and plans are subject to developer guidelines and may vary at any time.