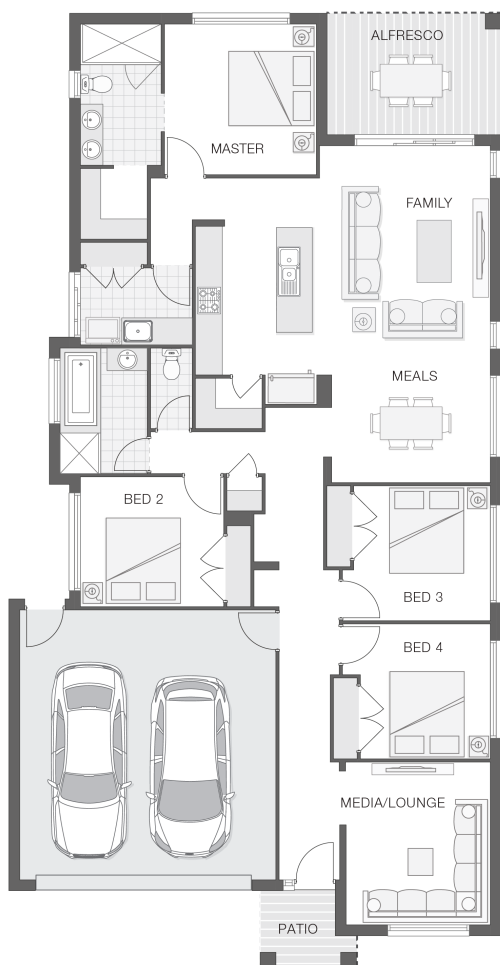




House Plan:



LOT #180

Narangba Heights

Address: Address Upon Request, Narangba, 4504



402 m²

The Saxon - D

Package Price From

4 2 2 22 sq

\$599,939*

About package:

The Saxon home design achieves the perfect balance between compact living and functionality.

This Home & Land Package Includes the Following with No More to Pay...
 Saxon D Floor Plan with the Bexley Facade as per Main image
 2590mm high Ceilings throughout
 Carpets/Tiles or Carpets/Timber Laminate - The choice is yours at no extra cost.
 20mm Stone Benchtops to Kitchen, Bathroom & Ensuite
 LED Downlights throughout
 Tiled undercover Alfresco area
 Driveway
 Clothesline
 Letterbox
 Fully ducted Air Conditioning
 Flyscreens to all windows
 Tiled recessed Niches to both Showers
 Soft close drawers and doors to Kitchen & Bathrooms
 Roller blinds to all Windows.
 Landscaping turf & garden beds

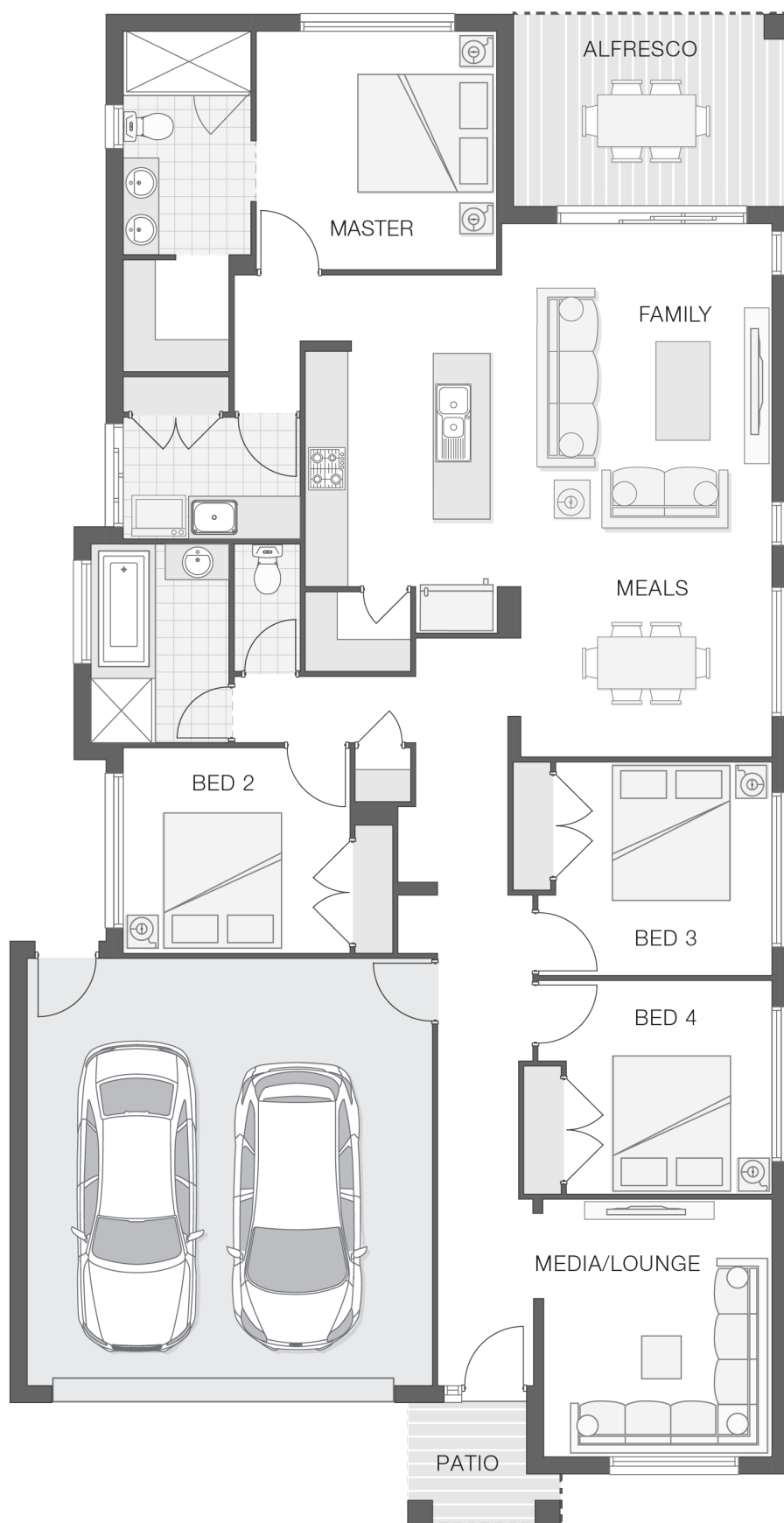
ENQUIRE NOW:

Martin Donovan • P: 0456 624 304 • E: brisbane.display@adenbrook.com.au

Plans and designs depicted may change with facade selection. All drawings and photographs are for illustrative purposes only. This work is exclusively owned by AB Aust. IP Pty Ltd (ACN 163 575 077) and cannot be reproduced or copied wholly or in part, in any form without permission of AB Aust. IP Pty Ltd. Any prices in this document include GST, are subject to change without notice, relate only to the base house price and standard inclusions. Site costs will vary depending on site conditions, local Council requirements, estate guidelines and any other statutory requirements applicable. Adenbrook Homes does not have a hold on the block, this package is subject to land availability and you securing the land through the land agent directly. For more information please speak to one of our friendly New Home Consultants.

House Features:

- ✓ Tiling and carpet throughout
- ✓ TV antenna and clothesline
- ✓ Brick and rendered letterbox
- ✓ Exposed aggregate driveway and path
- ✓ Daikin ducted air conditioning
- ✓ Tiling and integral slab to alfresco
- ✓ 1020mm entry door
- ✓ Monier Atura Low-profile roof tiles or Colorbond roof
- ✓ 2590mm ceiling height to lower level
- ✓ Flyscreens to windows
- ✓ LED downlights
- ✓ Cold water tap to fridge space
- ✓ 20mm stone benchtops to kitchen, ensuite and bathrooms
- ✓ Westinghouse stainless steel dishwasher
- ✓ Externally ducted rangehood
- ✓ Soft-close drawers to kitchen, ensuite and bathrooms
- ✓ Shower niche to ensuite & bathroom
- ✓ Render to entire house
- ✓ \$15,000 First Home Owners Grant



ENQUIRE NOW:

Martin Donovan • P: 0456 624 304 • E: brisbane.display@adenbrook.com.au

Plans and designs depicted may change with facade selection. All drawings and photographs are for illustrative purposes only. This work is exclusively owned by AB Aust. IP Pty Ltd (ACN 163 575 077) and cannot be reproduced or copied wholly or in part, in any form without permission of AB Aust. IP Pty Ltd. Any prices in this document include GST, are subject to change without notice, relate only to the base house price and standard inclusions. Site costs will vary depending on site conditions, local Council requirements, estate guidelines and any other statutory requirements applicable. Adenbrook Homes does not have a hold on the block, this package is subject to land availability and you securing the land through the land agent directly. For more information please speak to one of our friendly New Home Consultants.