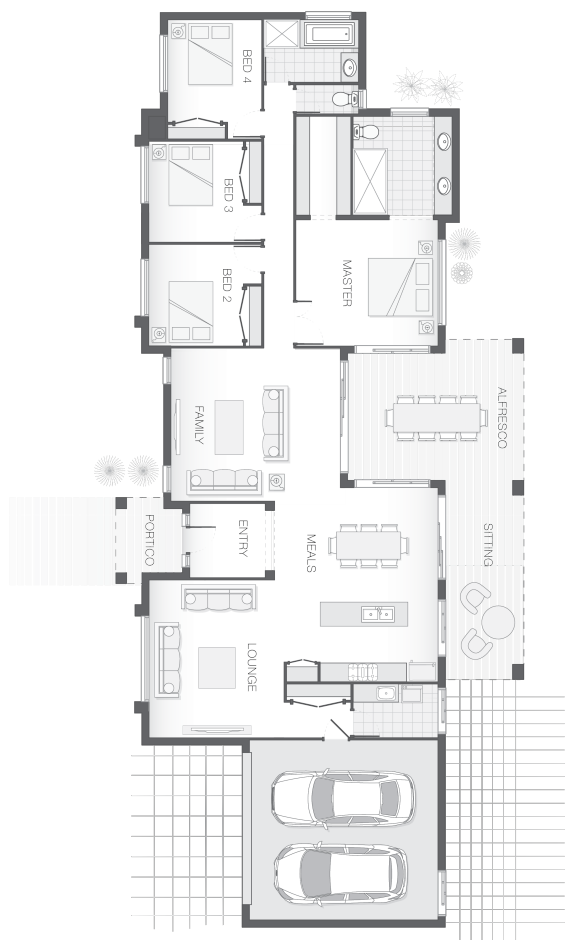




House Plan:



LOT #30

Caballo Park Estate

Address: BRUMBY PLACE, Kilcoy, 4515



16000 m²

The Beacon

Package Price From

4

2

2

30 sq

\$661,747*

About package:

The Beacon has an expansive frontage and a large footprint, the Beacon is designed to make a dramatic first impression with its grand entrance. The sprawling living space boasts media lounge, family rooms, family retreats, over-sized bedrooms and an elaborate open plan kitchen, living, dining and alfresco space to suit the most avid entertainer.

H1 Slab Included

2590mm high Ceilings throughout

Carpets/Tiles or Carpets/Timber Laminate - The choice is yours at no extra cost.

20mm Stone Benchtops to Kitchen, Bathroom & Ensuite

LED Downlights throughout

Tiled undercover Alfresco area

Driveway

Clothesline

Letterbox

Fully ducted Air Conditioning

Flyscreen's to all windows

Tiled recessed Niches to both Showers

Soft close drawers and doors to Kitchen & Bathrooms

Ceiling fans throughout including Alfresco.

ENQUIRE NOW:

Leigh Shepherd • P: 0407 771 521 • E: brisbane.display@adenbrook.com.au

Images depicted on this site are for illustration purposes only. Facades and other images of homes and land estates may include optional upgrades, additional fixtures, finishes and home or estate features that are not included in the base price of the home or land package such as landscaping, feature tiling, decking, furnishing, feature lighting, pools, etc. Land estate pricing and plans are subject to developer guidelines and may vary at any time.

Powered by  iBuildNew

adenbrook
homes

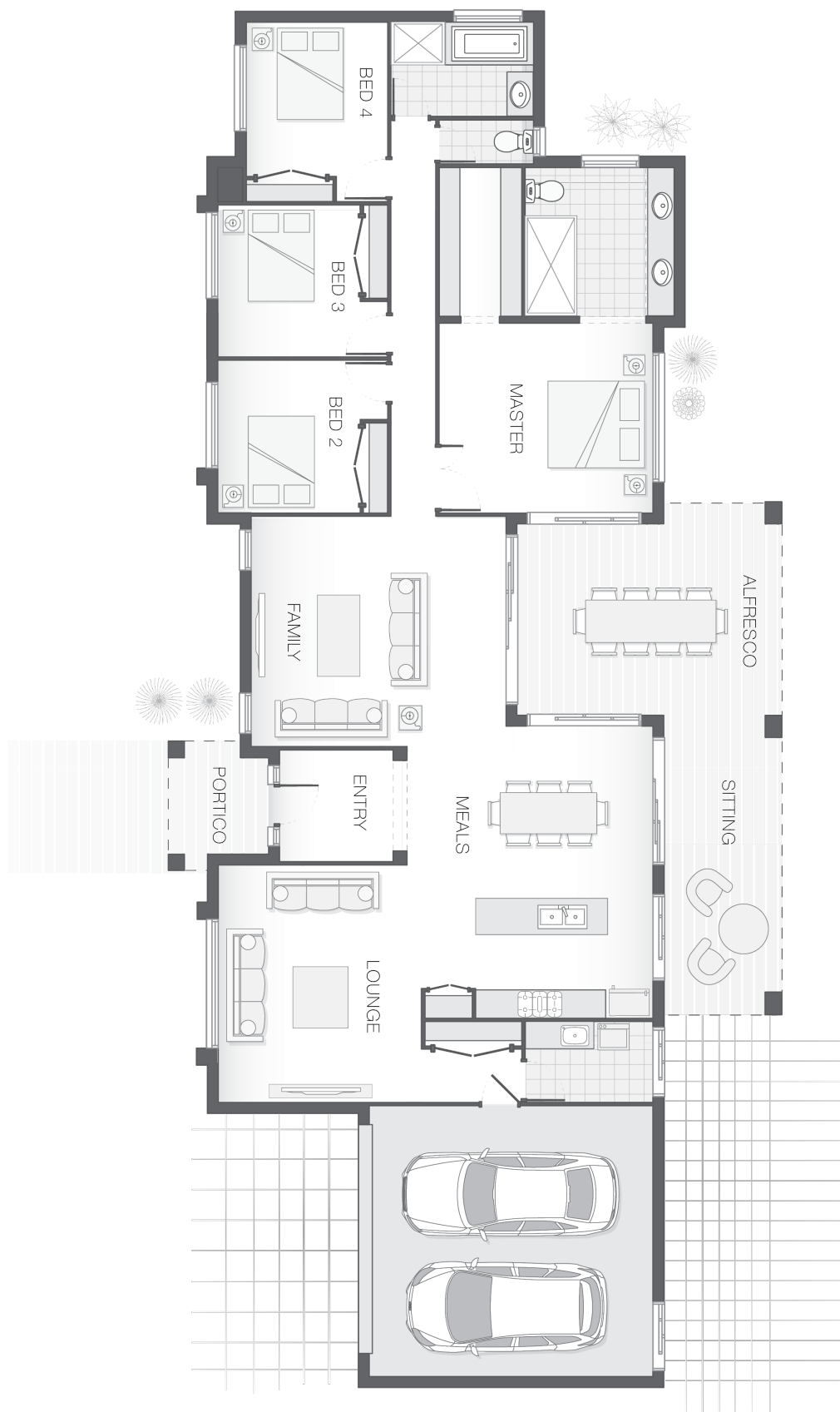
REF: IADEQHL541479

House Features:

- ✓ Tiling and carpet throughout
- ✓ TV antenna and clothesline
- ✓ Brick and rendered letterbox
- ✓ Exposed aggregate driveway and path
- ✓ Daikin ducted air conditioning
- ✓ Tiling and integral slab to alfresco
- ✓ 1020mm entry door
- ✓ Monier Atura Low-profile roof tiles or Colorbond roof
- ✓ 2590mm ceiling height to lower level
- ✓ Flyscreens to windows
- ✓ LED downlights
- ✓ Cold water tap to fridge space
- ✓ 20mm stone benchtops to kitchen, ensuite and bathrooms
- ✓ Westinghouse stainless steel dishwasher
- ✓ Externally ducted rangehood
- ✓ Soft-close drawers to kitchen, ensuite and bathrooms
- ✓ Shower niche to ensuite & bathroom
- ✓ \$15,000 First Home Owners Grant

Estate Features:

- ✓ Mitre 10, and shopping complex nearby.
- ✓ medical centre, and hospital
- ✓ golf course
- ✓ local historic pubs
- ✓ Brisbane Valley Rail Trail.
- ✓ State Primary and High School
- ✓ racecourse, public pools and parks



ENQUIRE NOW:

Leigh Shepherd • P: 0407 771 521 • E: brisbane.display@adenbrook.com.au

Images depicted on this site are for illustration purposes only. Facades and other images of homes and land estates may include optional upgrades, additional fixtures, finishes and home or estate features that are not included in the base price of the home or land package such as landscaping, feature tiling, decking, furnishing, feature lighting, pools, etc. Land estate pricing and plans are subject to developer guidelines and may vary at any time.