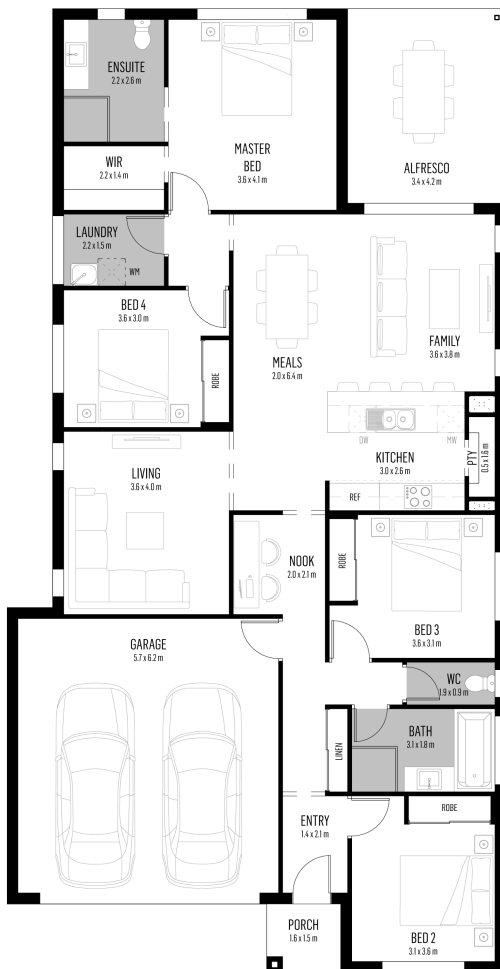




Floor Plan:



LOT #1125

Windermere

Address: Benmore Street, Mambourin, 3024



350 m²

Dorrington 22

Package Price From

4 2 2 204 sqm

\$524,000*

About package:

At Privium Homes, we understand that your home is where your greatness starts. It's where dreams and memories are made. We're here to help customise, curate and co-design a home that perfectly reflects your personal style.

Dorrington 22 Design

With industry leading inclusions, this package is designed to include everything you will need to move in and start making memories!

Inclusions:

- Designer rendered front façade
- COLORBOND® roof
- LED down lights throughout
- Higher ceilings 2590mm throughout
- Driveway, porch and path
- Timber stained entry door
- Stone benchtops to kitchen, bathroom and ensuite
- 900mm wide appliances
- Floor coverings throughout
- Covered outdoor room
- Turf and garden landscape to front yard
- Letter box and clothesline
- Lifetime structural guarantee

ENQUIRE NOW:

Anu Saxena • P: 0447 548 794 • E: anu.saxena@priviumhomes.com.au

Images depicted on this site are for illustration purposes only. Facades and other images of homes and land estates may include optional upgrades, additional fixtures, finishes and home or estate features that are not included in the base price of the home or land package such as landscaping, feature tiling, decking, furnishing, feature lighting, pools, etc. Land estate pricing and plans are subject to developer guidelines and may vary at any time.