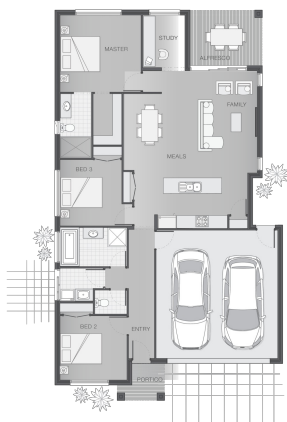
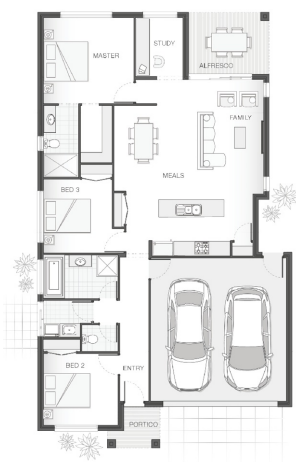




### House Plan:



### LOT #114

arc on the point

Address: New Rd, Victoria Point, 4165



400 m<sup>2</sup>

### The Brampton

Package Price From

3

2

2

19 sq

**\$644,684\***

### About package:

The Brampton home design is clever, comfortable and classy. The open plan design lends to interactive family living with the open plan living, dining and alfresco entertaining space, while the bedrooms all achieve good separation and privacy. The master retreat has a well-appointed ensuite and walk-in-robe and is generous in size. The study or home office is versatile and conveniently located alongside the main living zone. This home offers the best in style and comfort for the smaller family.

#### H1 Slab Included

2590mm high Ceilings throughout

Carpets/Tiles or Carpets/Timber Laminate - The choice is yours at no extra cost.

20mm Stone Benchtops to Kitchen, Bathroom & Ensuite

LED Downlights throughout

Tiled undercover Alfresco area

Driveway

Clothesline

Letterbox

Fully ducted Air Conditioning

Tiled recessed Niches to both Showers

Soft close drawers and doors to Kitchen & Bathrooms

Ceiling fans throughout including Alfresco.

### ENQUIRE NOW:

Leigh Shepherd • P: 0407 771 521 • E: brisbane.display@adenbrook.com.au

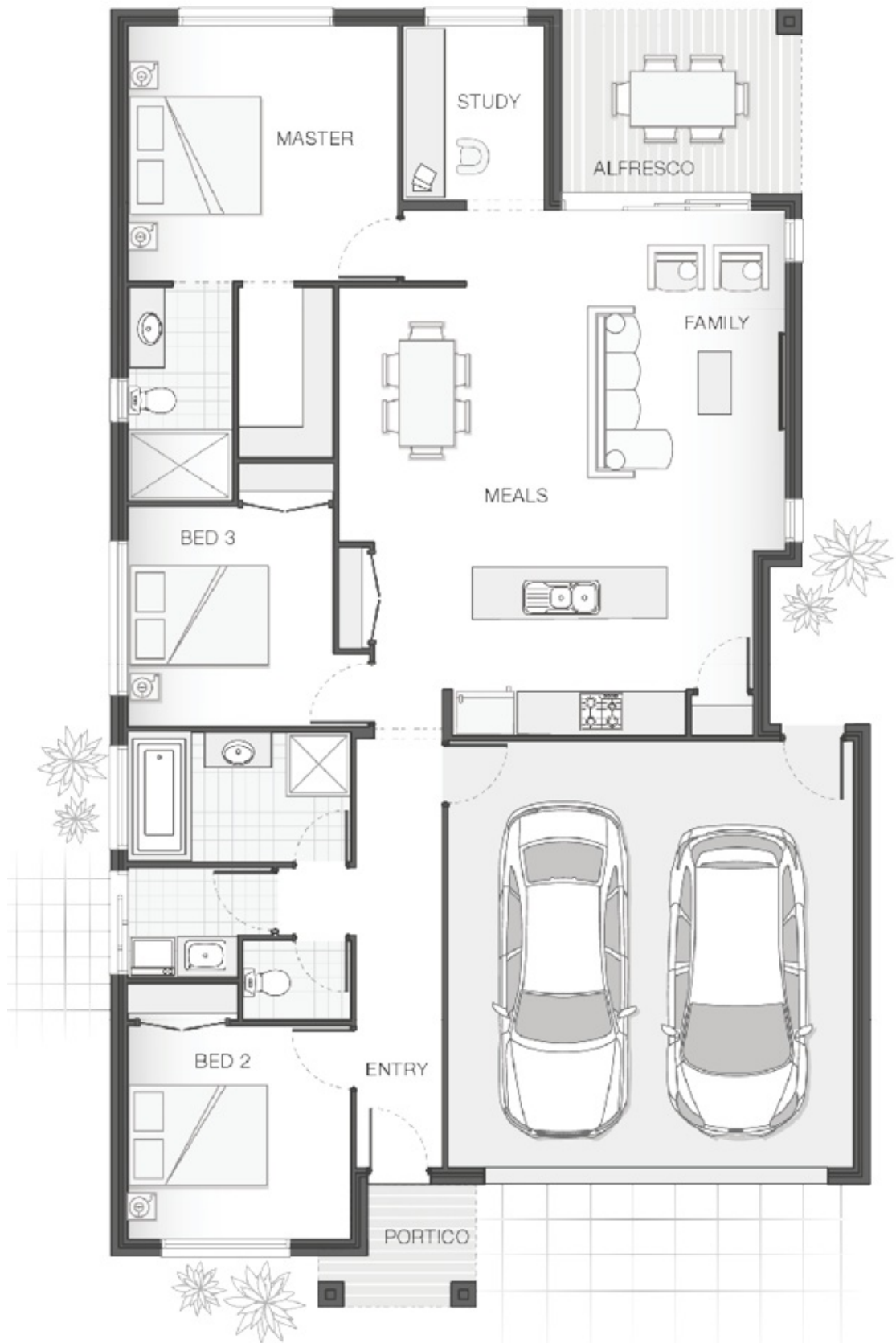
Images depicted on this site are for illustration purposes only. Facades and other images of homes and land estates may include optional upgrades, additional fixtures, finishes and home or estate features that are not included in the base price of the home or land package such as landscaping, feature tiling, decking, furnishing, feature lighting, pools, etc. Land estate pricing and plans are subject to developer guidelines and may vary at any time.

### House Features:

- ✓ Tiling and carpet throughout
- ✓ TV antenna and clothesline
- ✓ Brick and rendered letterbox
- ✓ Exposed aggregate driveway and path
- ✓ Daikin ducted air conditioning
- ✓ Tiling and integral slab to alfresco
- ✓ 1020mm entry door
- ✓ Monier Atura Low-profile roof tiles or Colorbond roof
- ✓ 2590mm ceiling height to lower level
- ✓ Flyscreens to windows
- ✓ LED downlights
- ✓ Cold water tap to fridge space
- ✓ 20mm stone benchtops to kitchen, ensuite and bathrooms
- ✓ Westinghouse stainless steel dishwasher
- ✓ Externally ducted rangehood
- ✓ Soft-close drawers to kitchen, ensuite and bathrooms
- ✓ Shower niche to ensuite & bathroom
- ✓ \$15,000 First Home Owners Grant

### Estate Features:

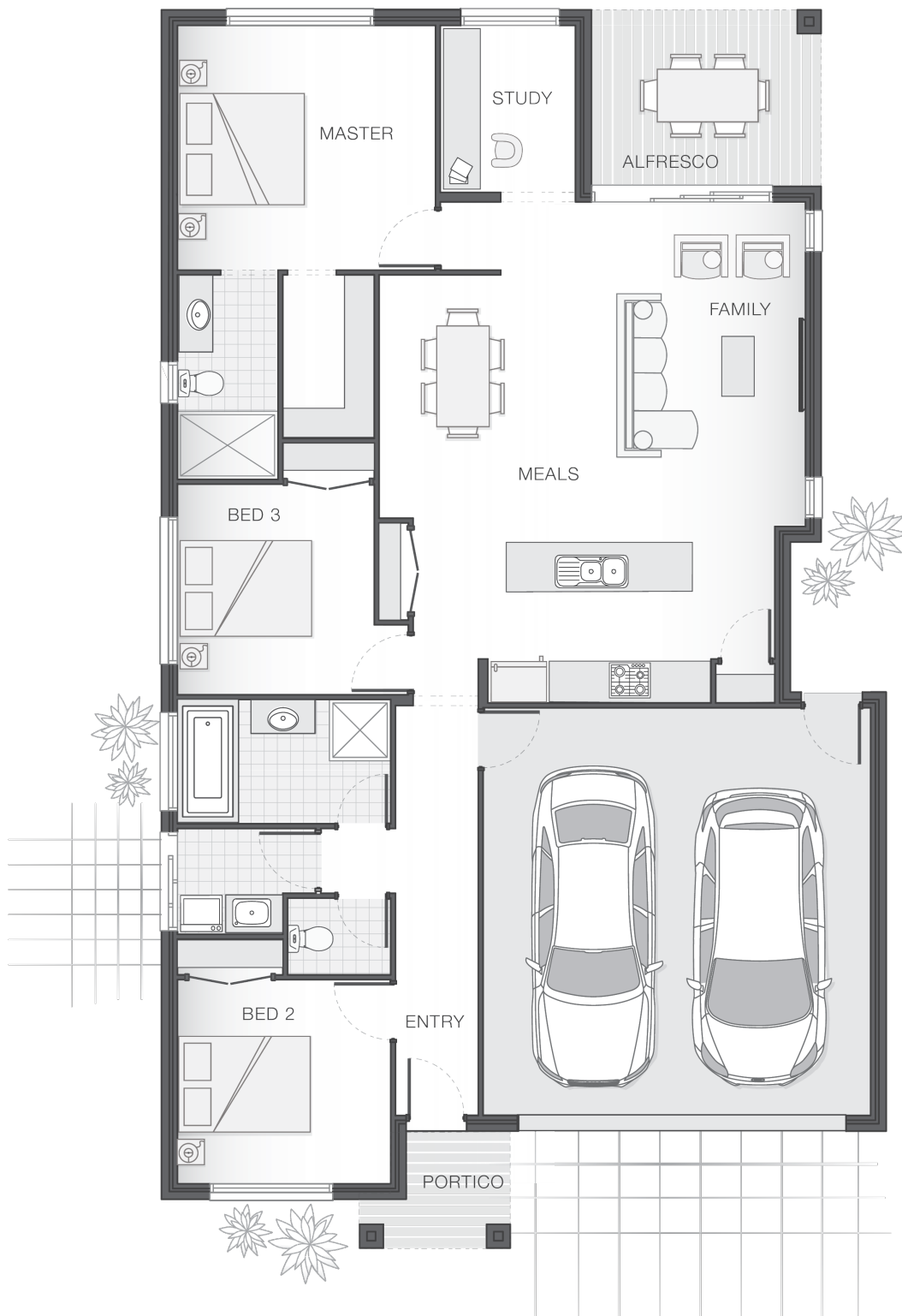
- ✓ Redland Bay golf course
- ✓ Victoria Point medical precinct
- ✓ Lakeside restaurants and cinemas
- ✓ Victoria Point Lakeside Shopping Centre
- ✓ Coochiemudlo Island Ferry
- ✓ Thompson beach esplanade and park
- ✓ Victoria Point Jetty and boat ramp
- ✓ Victoria Point beachfront walk
- ✓ Victoria Point central bus exchange
- ✓ Victoria Point State High School



### ENQUIRE NOW:

Leigh Shepherd • P: 0407 771 521 • E: [brisbane.display@adenbrook.com.au](mailto:brisbane.display@adenbrook.com.au)

Images depicted on this site are for illustration purposes only. Facades and other images of homes and land estates may include optional upgrades, additional fixtures, finishes and home or estate features that are not included in the base price of the home or land package such as landscaping, feature tiling, decking, furnishing, feature lighting, pools, etc. Land estate pricing and plans are subject to developer guidelines and may vary at any time.



## ENQUIRE NOW:

Leigh Shepherd • P: 0407 771 521 • E: [brisbane.display@adenbrook.com.au](mailto:brisbane.display@adenbrook.com.au)

Images depicted on this site are for illustration purposes only. Facades and other images of homes and land estates may include optional upgrades, additional fixtures, finishes and home or estate features that are not included in the base price of the home or land package such as landscaping, feature tiling, decking, furnishing, feature lighting, pools, etc. Land estate pricing and plans are subject to developer guidelines and may vary at any time.