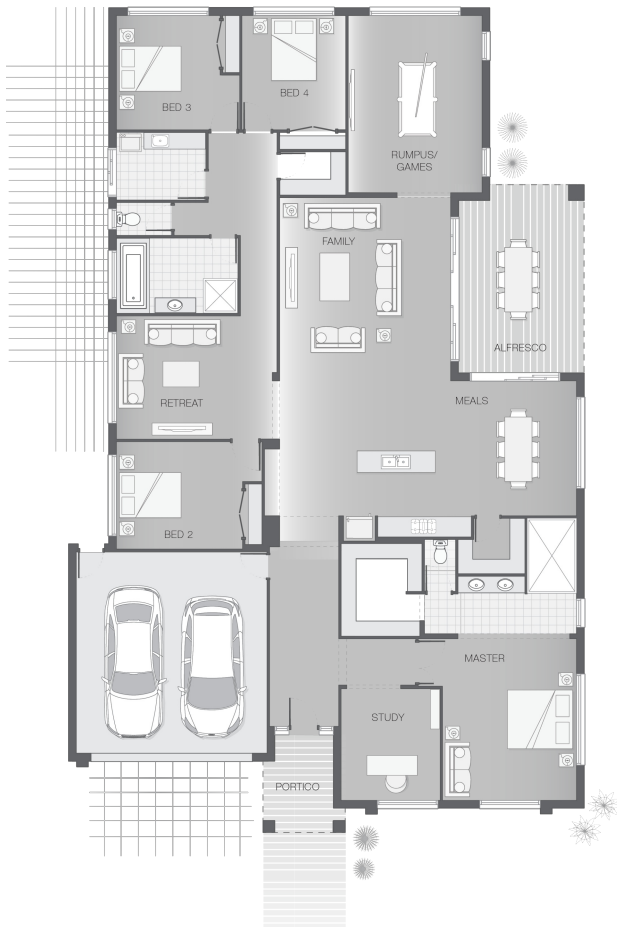




House Plan:



LOT #7

The Breeze

Address: New Road, Deception Bay, 4508



700 m²

The Baywood - A - Brisbane

Package Price From

\$808,779*

4 2 2 35 sq

About package:

The Baywood home design is equally as stylish as it is tasteful. The layout affords privacy and separation while also offering a central heart of the home which is comprised of kitchen, dining and alfresco space ideal for entertainment, enjoyment and relaxation. The master retreat with ensuite and walk-in-robe is expansive and provides the perfect haven to escape to for quiet moments. The Baywood also cleverly presents a separate office or study space and a children's retreat amongst the bedroom wing making it practical and private for the entire family.

- 900mm Westinghouse Appliance's
- 2590mm high Ceilings throughout
- Carpets/Tiles or Carpets/Timber Laminate - The choice is yours at no extra cost.
- 20mm Stone Benchtops to Kitchen, Bathroom & Ensuite
- Upgraded 40mm Stone to Kitchen, Bathroom & Ensuite
- LED Downlights throughout
- Tiled undercover Alfresco area
- Driveway
- Fully ducted Air Conditioning
- Tiled recessed Niches to both Showers
- Soft close drawers and doors to Kitchen & Bathrooms
- Ceiling fans throughout including Alfresco.

ENQUIRE NOW:

Leigh Shepherd • P: 0407 771 521 • E: brisbane.display@adenbrook.com.au

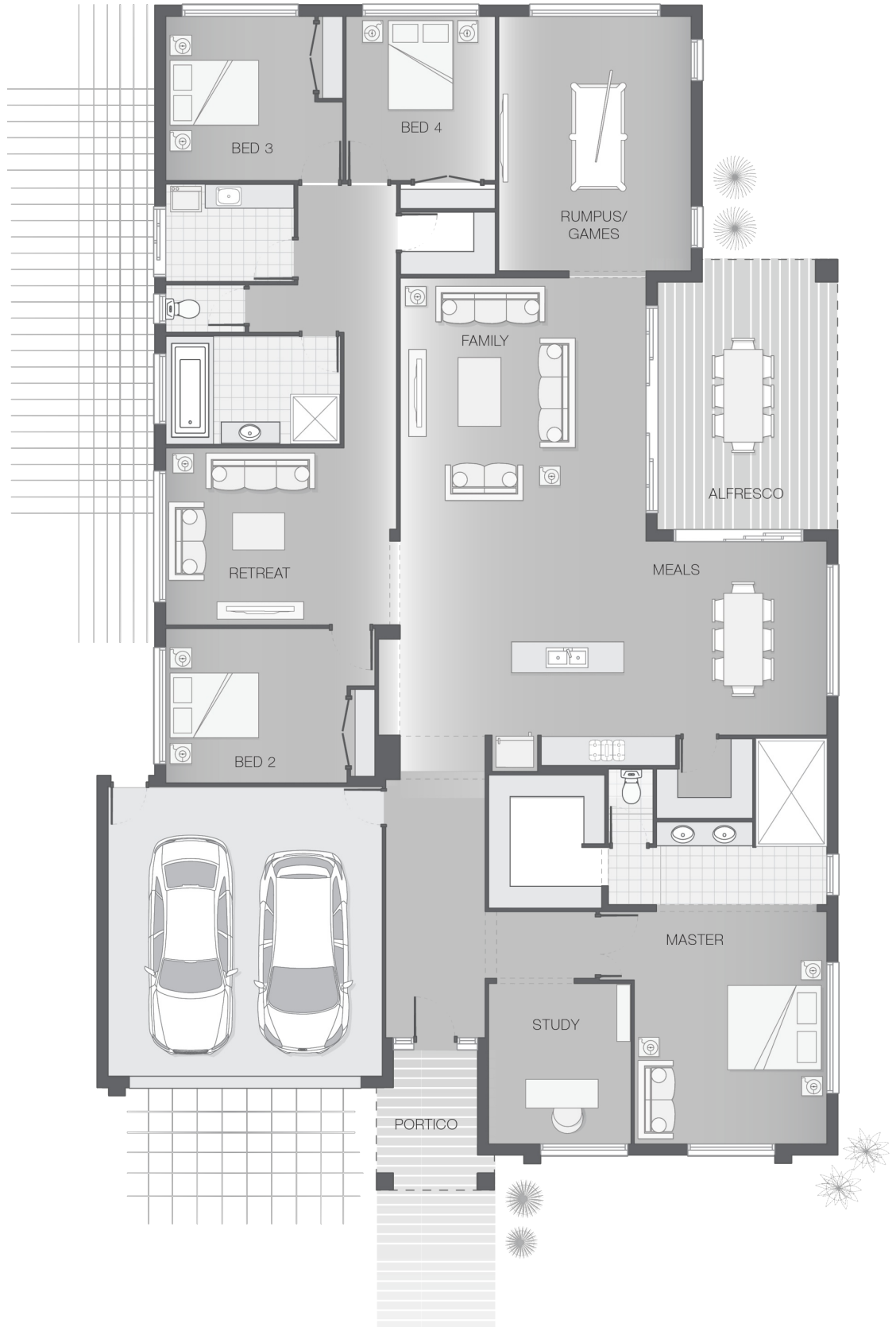
Images depicted on this site are for illustration purposes only. Facades and other images of homes and land estates may include optional upgrades, additional fixtures, finishes and home or estate features that are not included in the base price of the home or land package such as landscaping, feature tiling, decking, furnishing, feature lighting, pools, etc. Land estate pricing and plans are subject to developer guidelines and may vary at any time.

House Features:

- ✓ Tiling and carpet throughout
- ✓ Exposed aggregate driveway and path
- ✓ Daikin ducted air conditioning
- ✓ Tiling and integral slab to alfresco
- ✓ 1020mm entry door
- ✓ Monier Atura Low-profile roof tiles or Colorbond roof
- ✓ 2590mm ceiling height to lower level
- ✓ LED downlights
- ✓ Cold water tap to fridge space
- ✓ 20mm stone benchtops to kitchen, ensuite and bathrooms
- ✓ Westinghouse stainless steel dishwasher
- ✓ Externally ducted rangehood
- ✓ Soft-close drawers to kitchen, ensuite and bathrooms
- ✓ Shower niche to ensuite & bathroom
- ✓ \$15,000 First Home Owners Grant

Estate Features:

- ✓ Foreshore Park: about 1.8km
- ✓ Boat Ramp: about 1.9km
- ✓ Deception Bay Shopping centre: about 4.3km
- ✓ Deception Bay State School: about 3.7km
- ✓ Deception Bay State High School: about 5.4km
- ✓ Christ The King Catholic Primary School: about 2km
- ✓ Bus Stop: about 450m walk
- ✓ Costco Wholesale: about 8.6km



ENQUIRE NOW:

Leigh Shepherd • P: 0407 771 521 • E: brisbane.display@adenbrook.com.au