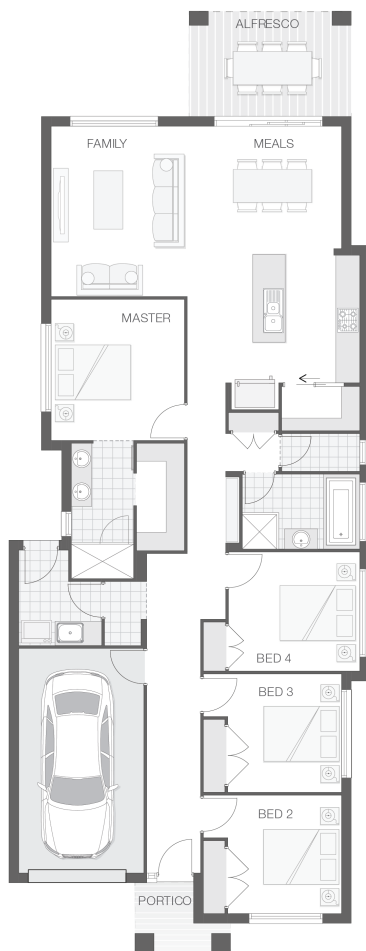


The Demi

4 2 1 19 sq

Facade name: Byron

House Plan:



LOT #2266

Carmel View

Address: Proposed Road, Box Hill, 2765



300 m²

House and land package price:

From **\$1,199,900***

About package:

Adenbrook Homes South West Sydney offer this amazing House and Land Package located in the highly sought-after estate of Carmel View, Box Hill.

Set on a 300m² block of land due to register mid 2022, we have coupled it with our Demi home design and Byron Facade.

This House and Land Package includes:

- * Fixed site costs
- * Includes Basix requirement
- * Builders range tiles & carpet throughout home
- * Tiling to the Alfresco and Portico
- * Coloured Concrete Driveway
- * Daiken Reverse Cycle Ducted Air Con.

PLUS our fantastic Ultimate Upgrade Bundle including:

- * 2590mm ceiling heights throughout (ground floor only to double storey homes)
- * shower Niche to Bathroom and En-suite
- * Monier Atura Low Profile Roof Tiles
- * 1020mm Entry Door
- * Fly-screens to all openable windows
- * 20mm Stone bench-top to the kitchen, bathroom and En-suite.
- * Westinghouse Dishwasher

Don't miss out, enquire today to find out how to make this dream a reality

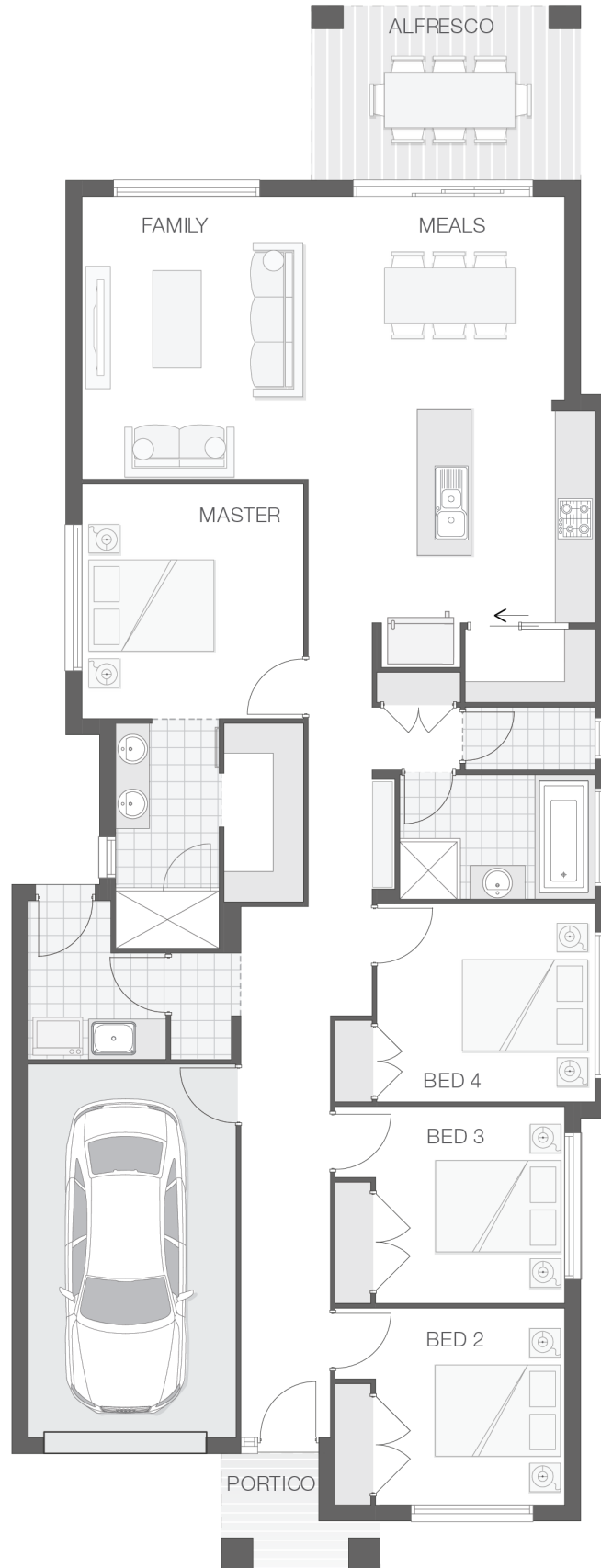
ENQUIRE NOW:

Morgan Roberts • P: 0415 301 615 • E: sydneywest.southwest@adenbrook.com.au

Images depicted on this site are for illustration purposes only. Facades and other images of homes and land estates may include optional upgrades, additional fixtures, finishes and home or estate features that are not included in the base price of the home or land package such as landscaping, feature tiling, decking, furnishing, feature lighting, pools, etc. Land estate pricing and plans are subject to developer guidelines and may vary at any time.

House Features:

- ✓ Tiling to the Alfresco and Portico
- ✓ 1020mm Entry Door
- ✓ Shower Niches
- ✓ Soft-close drawers and doors to Kitchen and Bathrooms
- ✓ 2590mm Ceiling Upgrade
- ✓ Coloured Concrete Driveway
- ✓ Flyscreens To all openable windows
- ✓ 2x Gas Points
- ✓ Much More...
- ✓ Builders Range Carpet and Laminate Throughout
- ✓ Daiken Reverse Cycle Ducted Air Conditioning
- ✓ Westinghouse Cooktop, Oven and Dishwasher
- ✓ Monier Atura low-profile roof tiles
- ✓ Clipsal Iconic Ultramodern range Switch Gear
- ✓ 20mm Stone benchtop to the kitchen, bathroom and Ensuite.



ENQUIRE NOW:

Morgan Roberts • P: 0415 301 615 • E: sydneywest.southwest@adenbrook.com.au

Images depicted on this site are for illustration purposes only. Facades and other images of homes and land estates may include optional upgrades, additional fixtures, finishes and home or estate features that are not included in the base price of the home or land package such as landscaping, feature tiling, decking, furnishing, feature lighting, pools, etc. Land estate pricing and plans are subject to developer guidelines and may vary at any time.