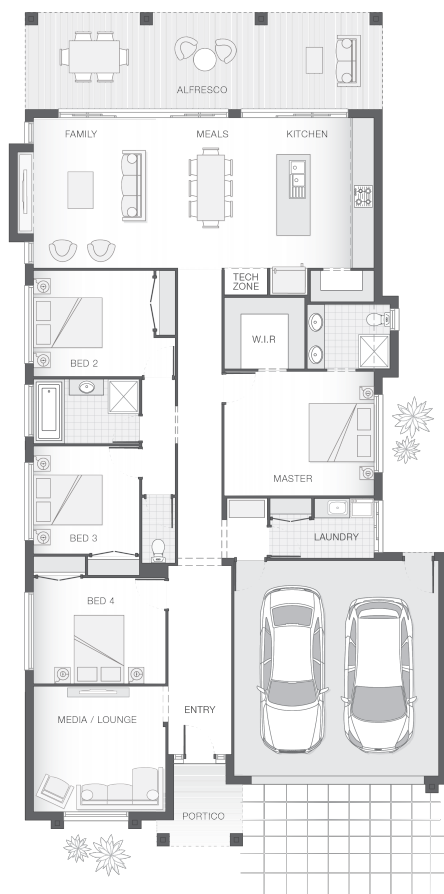




House Plan:



LOT #7

The Village

Address: Bundamba, 4304



450 m²

The Isla - B

Package Price From

4

2

2

25 sq

\$579,289*

About package:

The Isla home design is sophisticated and stylish, offering all the modern features that you need to relax, entertain and enjoy! The outdoor entertaining area runs the width of the home and flawlessly integrates with the family room, meals area and generous kitchen complete with butler's pantry creating an oversized entertainers delight. The master retreat with ensuite and walk-in-robe boasts great separation while the central living zone is dedicated to additional bedrooms and the media room.

2590mm high Ceilings throughout

Carpets/Tiles or Carpets/Timber Laminate - The choice is yours at no extra cost.

20mm Stone Benchtops to Kitchen, Bathroom & Ensuite

LED Downlights throughout

Tiled undercover Alfresco area

Driveway

Fully ducted Air Conditioning

Tiled recessed Niches to both Showers

Soft close drawers and doors to Kitchen & Bathrooms

Ceiling fans to bedrooms and Alfresco.

ENQUIRE NOW:

Leigh Shepherd • P: 0407 771 521 • E: brisbane.display@adenbrook.com.au

Images depicted on this site are for illustration purposes only. Facades and other images of homes and land estates may include optional upgrades, additional fixtures, finishes and home or estate features that are not included in the base price of the home or land package such as landscaping, feature tiling, decking, furnishing, feature lighting, pools, etc. Land estate pricing and plans are subject to developer guidelines and may vary at any time.

Powered by iBuildNew

adenbrook
homes

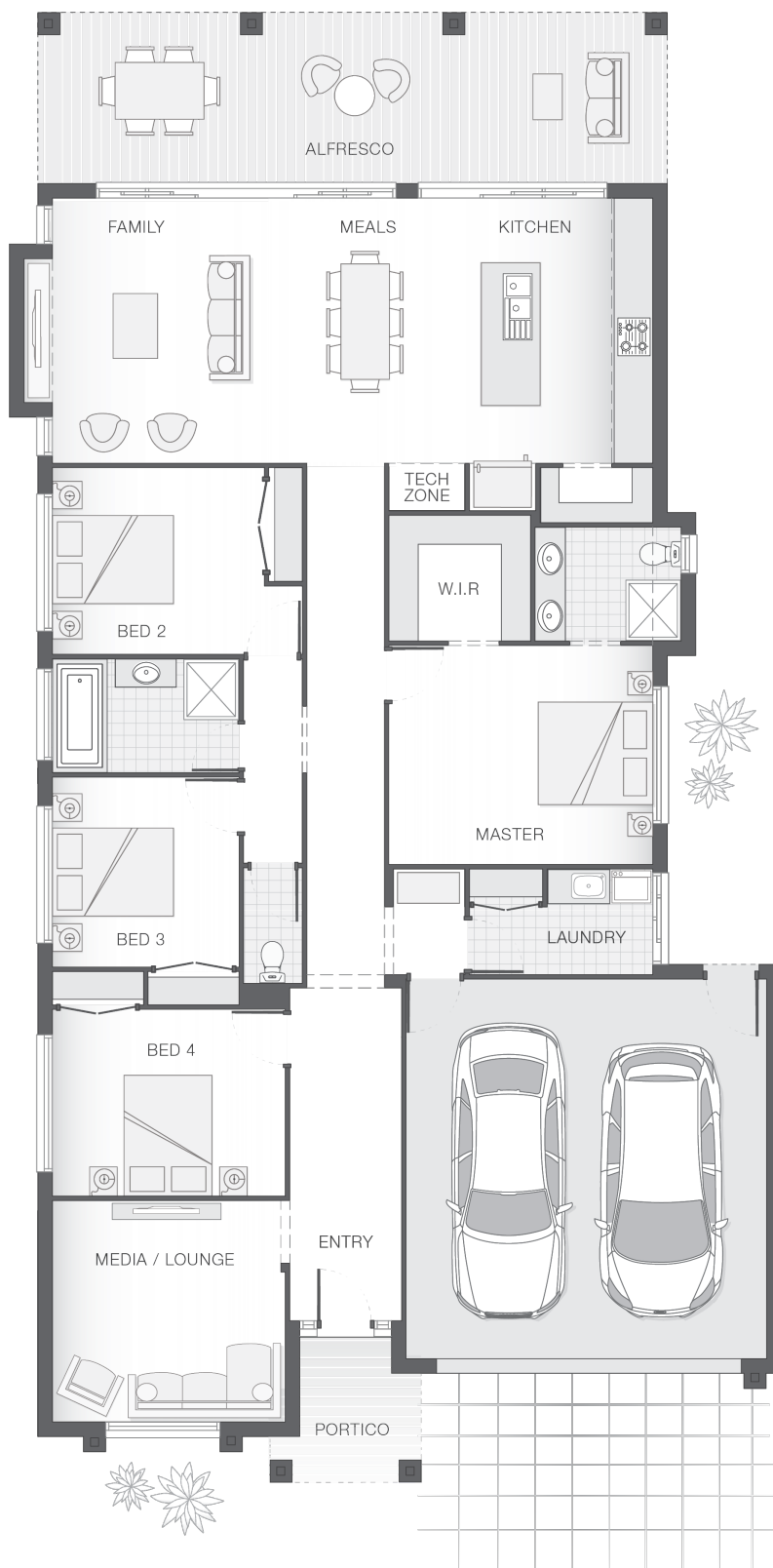
REF: IADEQHL552370

House Features:

- ✓ Tiling and carpet throughout
- ✓ TV antenna and clothesline
- ✓ Brick and rendered letterbox
- ✓ Exposed aggregate driveway and path
- ✓ Daikin ducted air conditioning
- ✓ Tiling and integral slab to alfresco
- ✓ 1020mm entry door
- ✓ Monier Atura Low-profile roof tiles or Colorbond roof
- ✓ 2590mm ceiling height to lower level
- ✓ Flyscreens to windows
- ✓ LED downlights
- ✓ Cold water tap to fridge space
- ✓ 20mm stone benchtops to kitchen, ensuite and bathrooms
- ✓ Westinghouse stainless steel dishwasher
- ✓ Externally ducted rangehood
- ✓ Soft-close drawers to kitchen, ensuite and bathrooms
- ✓ Shower niche to ensuite & bathroom
- ✓ \$15,000 First Home Owners Grant

Estate Features:

- ✓ Playground and Basketball Court
- ✓ Costco Ipswich
- ✓ Ipswich Turf Club
- ✓ TAFE Queensland Ipswich
- ✓ Bundamba State Secondary College
- ✓ Ipswich Grammar School
- ✓ Childcare facilities
- ✓ Variety of retail, shopping and dining
- ✓ Adventure Play Pool
- ✓ Barbecue and Picnic areas



ENQUIRE NOW:

Leigh Shepherd • P: 0407 771 521 • E: brisbane.display@adenbrook.com.au

Images depicted on this site are for illustration purposes only. Facades and other images of homes and land estates may include optional upgrades, additional fixtures, finishes and home or estate features that are not included in the base price of the home or land package such as landscaping, feature tiling, decking, furnishing, feature lighting, pools, etc. Land estate pricing and plans are subject to developer guidelines and may vary at any time.