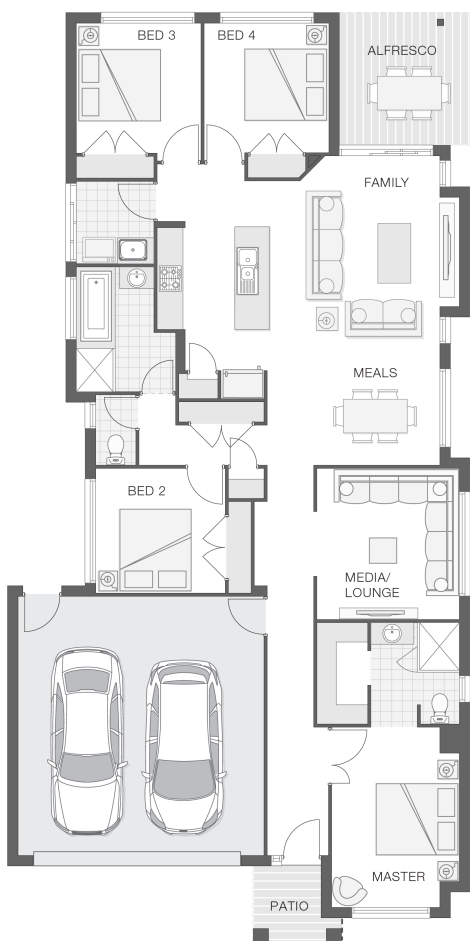




House Plan:



LOT #12

The Enclave

Address: Hyacinth Court, Upper Caboolture, 4510



466 m²

The Saxon

Package Price From

4

2

2

21 sq

\$564,779*

About package:

The Saxon home design achieves the perfect balance between compact living and functionality. The clever design incorporates a central hub for entertaining both indoors and out with the tidy alfresco area adjoining the kitchen, family room and meals zones. A touch of luxury is added through the separate media or lounge room while all bedrooms are well-appointed to allow separation and privacy. The master retreat includes an ensuite and walk-in-robe to round out a convenient and punchy design.

BAL 19

2590mm high Ceilings throughout

Carpets/Tiles or Carpets/Timber Laminate - The choice is yours at no extra cost.

20mm Stone Benchtops to Kitchen, Bathroom & Ensuite

LED Downlights throughout

Tiled undercover Alfresco area

Driveway

Fully ducted Air Conditioning

Tiled recessed Niches to both Showers

Soft close drawers and doors to Kitchen & Bathrooms

Ceiling fans to bedrooms and Alfresco.

ENQUIRE NOW:

Leigh Shepherd • P: 0407 771 521 • E: brisbane.display@adenbrook.com.au

Images depicted on this site are for illustration purposes only. Facades and other images of homes and land estates may include optional upgrades, additional fixtures, finishes and home or estate features that are not included in the base price of the home or land package such as landscaping, feature tiling, decking, furnishing, feature lighting, pools, etc. Land estate pricing and plans are subject to developer guidelines and may vary at any time.

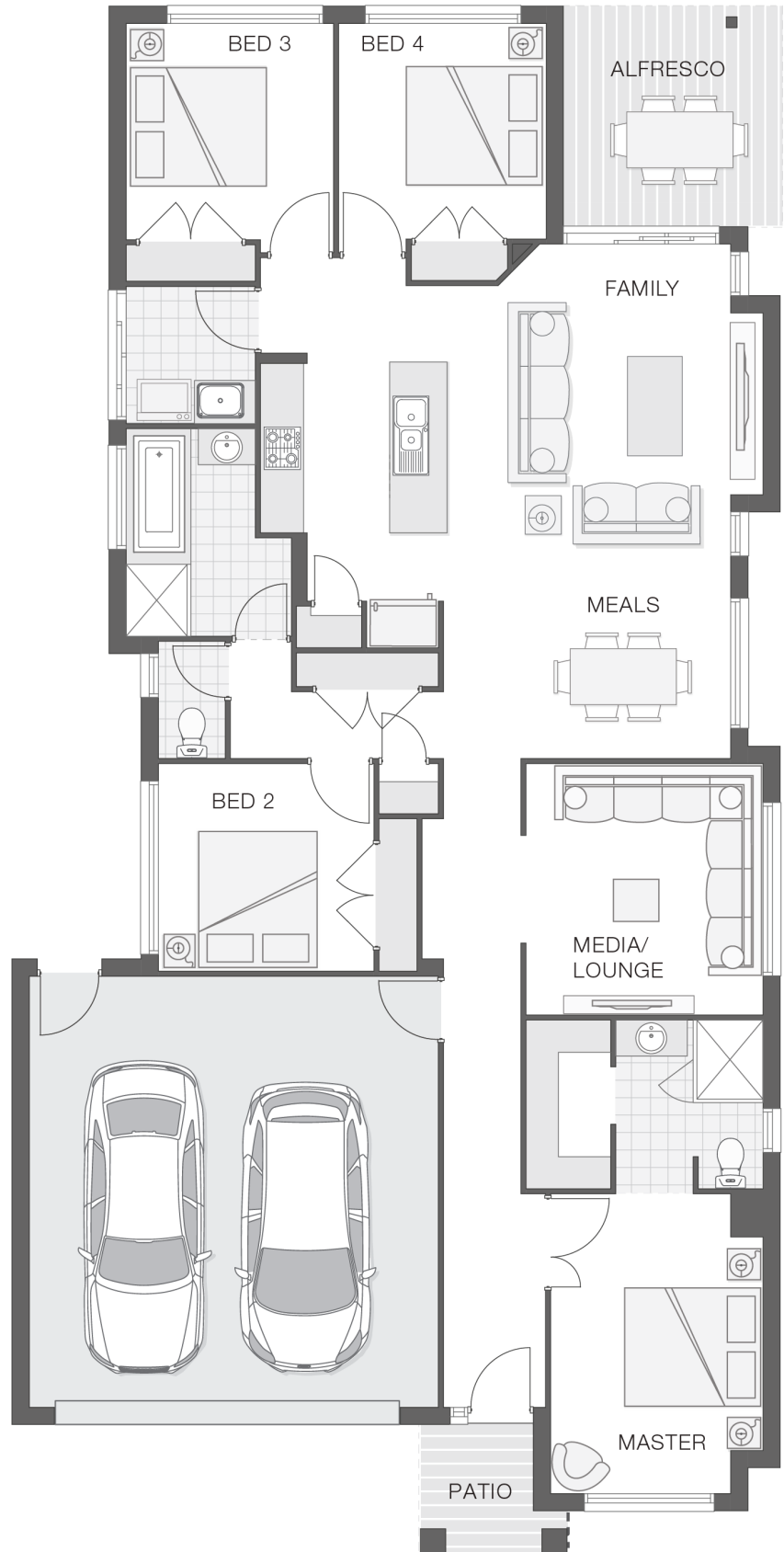
Powered by iBuildNew

adenbrook
homes

REF: IADEQHL552529

House Features:

- ✓ Tiling and carpet throughout
- ✓ Exposed aggregate driveway and path
- ✓ Daikin ducted air conditioning
- ✓ Tiling and integral slab to alfresco
- ✓ 1020mm entry door
- ✓ Monier Atura Low-profile roof tiles or Colorbond roof
- ✓ 2590mm ceiling height to lower level
- ✓ LED downlights
- ✓ Cold water tap to fridge space
- ✓ 20mm stone benchtops to kitchen, ensuite and bathrooms
- ✓ Westinghouse stainless steel dishwasher
- ✓ Externally ducted rangehood
- ✓ Soft-close drawers to kitchen, ensuite and bathrooms
- ✓ Shower niche to ensuite & bathroom
- ✓ \$15,000 First Home Owners Grant
- ✓ 25deg Pitch Roof



ENQUIRE NOW:

Leigh Shepherd • P: 0407 771 521 • E: brisbane.display@adenbrook.com.au

Images depicted on this site are for illustration purposes only. Facades and other images of homes and land estates may include optional upgrades, additional fixtures, finishes and home or estate features that are not included in the base price of the home or land package such as landscaping, feature tiling, decking, furnishing, feature lighting, pools, etc. Land estate pricing and plans are subject to developer guidelines and may vary at any time.