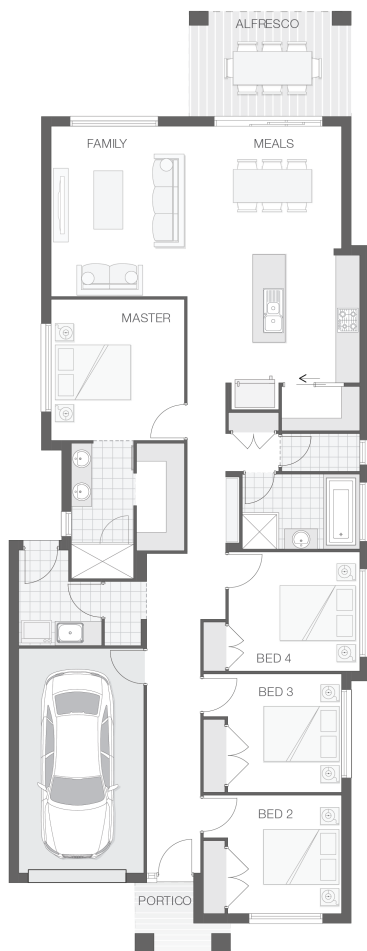


The Demi

4 2 1 19 sq

Facade name: Byron

House Plan:



LOT #2267

Carmel View

Address: Proposed Road, Box Hill, 2765



300 m²

House and land package price:

Fixed **\$1,168,900***

About package:

This Adenbrook Home & Land package is located in the highly sought-after estate of Carmel Views in Box Hill. Set on a 300m² block of land, we have coupled it with our Demi home design with the Byron Facade. Land due to register July 2022.

This House and Land Package includes:-

- *Fixed Site Costs and Basic Requirements
- * Builders range tiles & carpet throughout home
- * Tiling to the Alfresco and Portico
- * Coloured Concrete Driveway
- * Daikin Reverse Cycle Ducted Air Con.
- * Caroma Bathroom Accessories
- * PLUS our fantastic Ultimate Upgrade Bundle!

-- Our ULTIMATE BUNDLE PACKAGE has fantastic inclusions of
* 2590mm ceiling heights throughout (ground floor only to double storey homes)

- * shower Niche to Bathroom and En-suite
 - * Monier Atura Low Profile Roof Tiles
 - * 1020mm Entry Door
 - * Fly-screens to all openable windows
 - * 20mm Stone bench-top to the kitchen, bathroom and En-suite.
 - * Westinghouse Dishwasher, just to name a few
- Don't miss out, enquire today to find out how to make this dream a reality

ENQUIRE NOW:

Morgan Roberts • P: 0415 301 615 • E: sydneywest.southwest@adenbrook.com.au

Images depicted on this site are for illustration purposes only. Facades and other images of homes and land estates may include optional upgrades, additional fixtures, finishes and home or estate features that are not included in the base price of the home or land package such as landscaping, feature tiling, decking, furnishing, feature lighting, pools, etc. Land estate pricing and plans are subject to developer guidelines and may vary at any time.

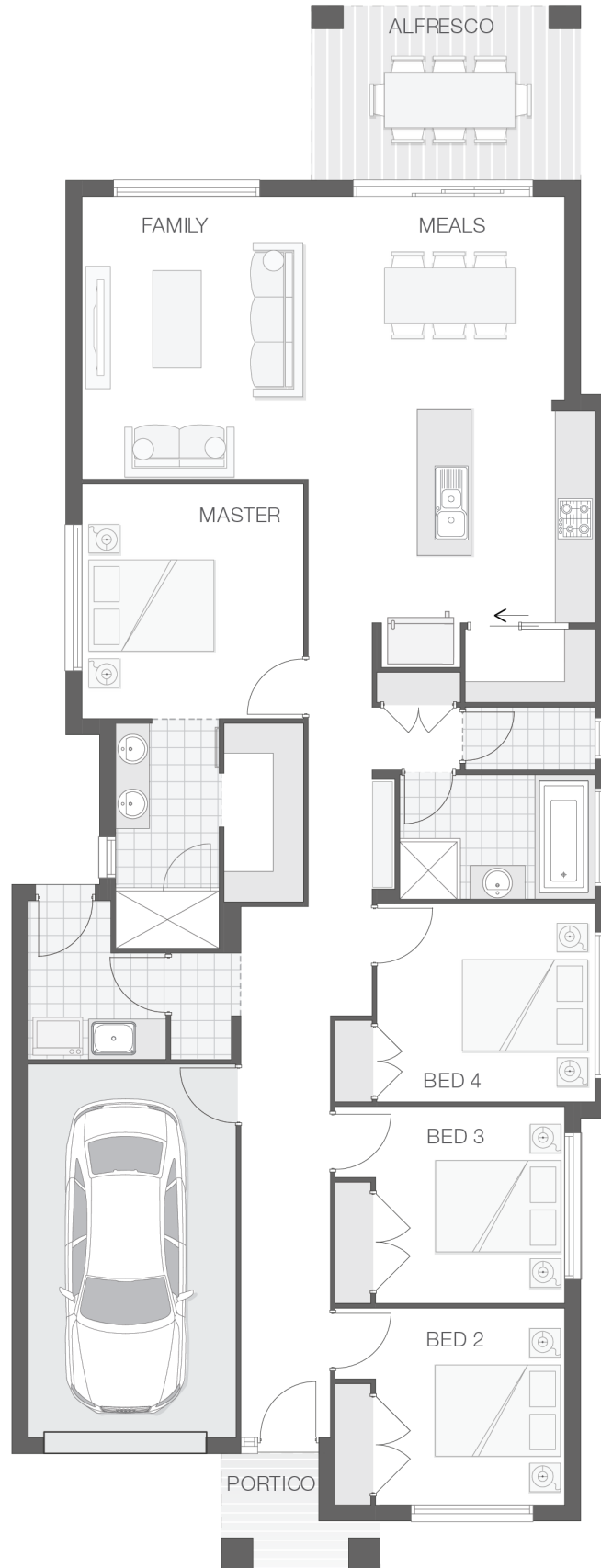
Powered by iBuildNew

adenbrook
homes

REF: IADENHL553870

House Features:

- ✓ Tiling to the Alfresco and Portico
- ✓ 1020mm Entry Door
- ✓ Shower Niches
- ✓ R2 Walls and R4 Ceiling Insulation
- ✓ Soft-close drawers and doors to Kitchen and Bathrooms
- ✓ Coloured Concrete Driveway
- ✓ 20mm Stone benchtop to the kitchen, bathroom and Ensuite.
- ✓ 2x Gas Points
- ✓ Flyscreens To all openable windows
- ✓ Much More...
- ✓ Builders range tiles & carpet throughout home
- ✓ Daiken Reverse Cycle Ducted Air Conditioning
- ✓ Westinghouse Cooktop, Oven and Dishwasher
- ✓ Monier Atura low-profile roof tiles
- ✓ Clipsal Iconic Ultramodern range Switch Gear
- ✓ 2590mm Ceiling Upgrade to the Ground Floor Only
- ✓ 20mm stone benchtop to bathroom and ensuite



ENQUIRE NOW:

Morgan Roberts • P: 0415 301 615 • E: sydneywest.southwest@adenbrook.com.au

Images depicted on this site are for illustration purposes only. Facades and other images of homes and land estates may include optional upgrades, additional fixtures, finishes and home or estate features that are not included in the base price of the home or land package such as landscaping, feature tiling, decking, furnishing, feature lighting, pools, etc. Land estate pricing and plans are subject to developer guidelines and may vary at any time.