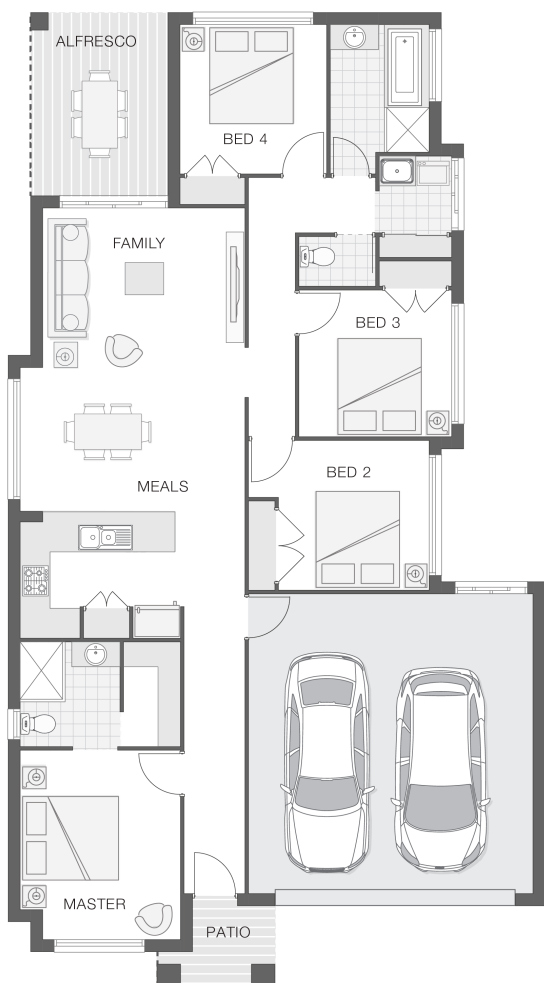


The Willow

4 2 2 19 sq

Facade name: Arden

House Plan:



LOT #142

Bellbird Park Estate

Address: Bellbird Park Estate, Nambucca Heads, 2448



500 m²

House and land package price:

From **\$693,900***

About package:

Bellbird Park Estate provides a rural lifestyle, yet close enough to beaches and wide-open spaces. Nambucca Heads is a beautiful coastal destination located on the Mid North Coast of NSW, at the mouth of the Nambucca River. The Willow home design is popular and practical for the modern family that loves to entertain and enjoy each other's company. The light and bright open plan design provides a great entertaining space within the hub of the home that incorporates the alfresco area, the kitchen and family room and meals zones. The generous master retreat enjoys an ensuite and walk-in-robe.

What's included in your beautifully finished, high quality new home

- All Council Fees and Approvals with M Class Soil
- Full sarking wrap to treated timber frames and roof
- Insulation to walls and ceiling, flyscreens
- Carpet / tiles or vinyl flooring
- Recessed wet areas
- Westinghouse appliances
- Alfresco with recessed stacking sliding doors
- Drop-in laundry tub with cabinet and clothesline
- Full electrical layout with downlights and feature lighting and TV aerial
- Water tank, mailbox and concrete driveway

ULTIMATE UPGRADE BUNDLE \$4990 (FREE FOR A LIMITED TIME ONLY!)

EXTERNAL / INTERNAL

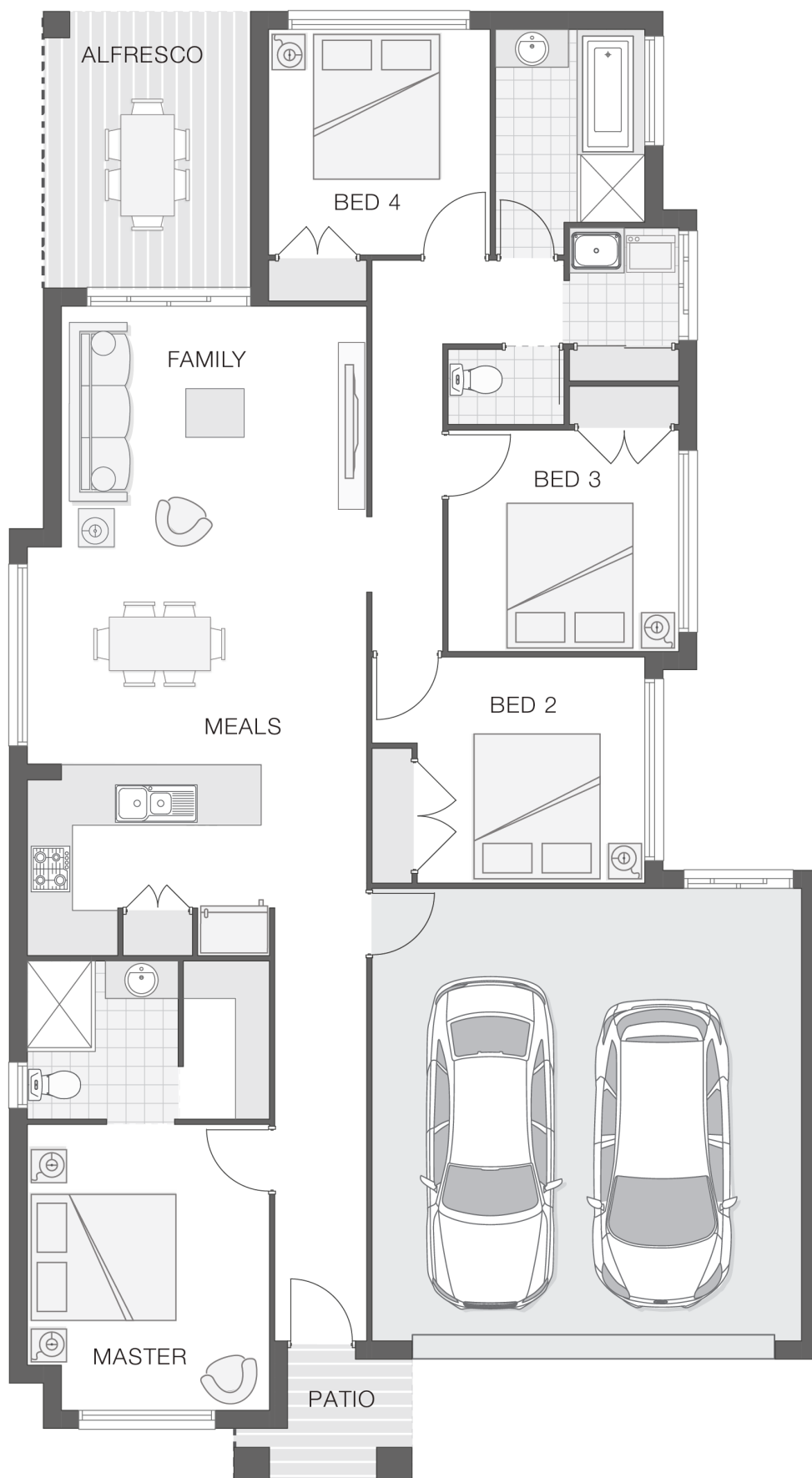
ENQUIRE NOW:

Katie Hawkins • P: 0412797925 • E: coffs.display@adenbrook.com.au

Plans and designs depicted may change with facade selection. All drawings and photographs are for illustrative purposes only. This work is exclusively owned by AB Aust. IP Pty Ltd (ACN 163 575 077) and cannot be reproduced or copied wholly or in part, in any form without permission of AB Aust. IP Pty Ltd. Any prices in this document include GST, are subject to change without notice, relate only to the base house price and standard inclusions. Site costs will vary depending on site conditions, local Council requirements, estate guidelines and any other statutory requirements applicable. Adenbrook Homes does not have a hold on the block, this package is subject to land availability and you securing the land through the land agent directly. For more information please speak to one of our friendly New Home Consultants.

House Features:

- ✓ Three (3) coat Haymes low toxic internal paint system
- ✓ Double lock-up garage with remotes, mailbox, and clothesline
- ✓ 3000L rainwater tank with submersible pump
- ✓ 3 included facade options and complimentary window changes
- ✓ Guaranteed build time, fixed price and no hidden costs
- ✓ Brushed Concrete Driveway
- ✓ Dishwasher
- ✓ Quality Timber Look Flooring, Carpet and Tiles
- ✓ Concrete Alfresco and Portico areas
- ✓ Flyscreens
- ✓ Letterbox and Clothesline
- ✓ Remote Controlled Garage Door + 2 remotes
- ✓ Ultimate upgrade bundle
- ✓ Square set ceilings to living area



ENQUIRE NOW:

Katie Hawkins • P: 0412797925 • E: coffs.display@adenbrook.com.au

Plans and designs depicted may change with facade selection. All drawings and photographs are for illustrative purposes only. This work is exclusively owned by AB Aust. IP Pty Ltd (ACN 163 575 077) and cannot be reproduced or copied wholly or in part, in any form without permission of AB Aust. IP Pty Ltd. Any prices in this document include GST, are subject to change without notice, relate only to the base house price and standard inclusions. Site costs will vary depending on site conditions, local Council requirements, estate guidelines and any other statutory requirements applicable. Adenbrook Homes does not have a hold on the block, this package is subject to land availability and you securing the land through the land agent directly. For more information please speak to one of our friendly New Home Consultants.