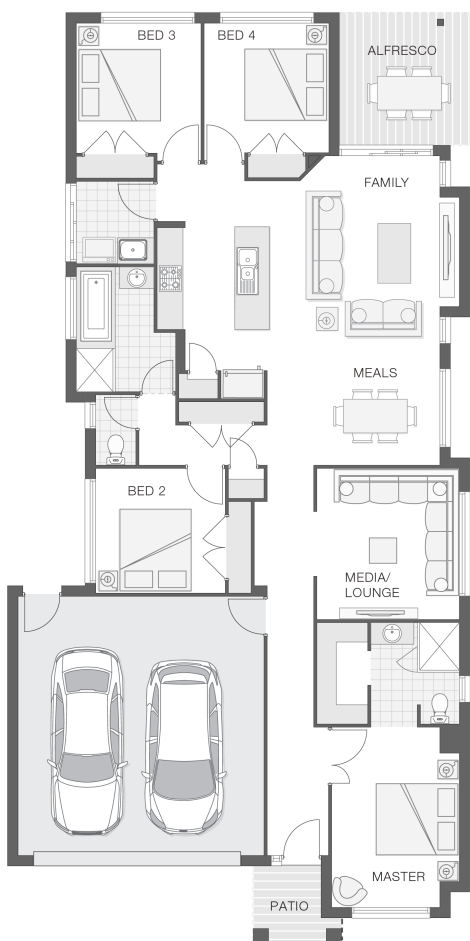




House Plan:



LOT #1

Carseldine - Adenbrook Homes

Address: New Road, Carseldine, 4034



400 m²

The Saxon

Package Price From

4 2 2 21 sq

\$973,191*

About package:

The Saxon home design achieves the perfect balance between compact living and functionality. The clever design incorporates a central hub for entertaining both indoors and out with the tidy alfresco area adjoining the kitchen, family room and meals zones. A touch of luxury is added through the separate media or lounge room while all bedrooms are well-appointed to allow separation and privacy. The master retreat includes an ensuite and walk-in-robe to round out a convenient and punchy design.

For more details and all inclusions visit:
<https://www.realestate.com.au/property-house-qld-carseldine-139055275>

ENQUIRE NOW:

Leigh Shepherd • P: 0407 771 521 • E: brisbane.display@adenbrook.com.au

Images depicted on this site are for illustration purposes only. Facades and other images of homes and land estates may include optional upgrades, additional fixtures, finishes and home or estate features that are not included in the base price of the home or land package such as landscaping, feature tiling, decking, furnishing, feature lighting, pools, etc. Land estate pricing and plans are subject to developer guidelines and may vary at any time.

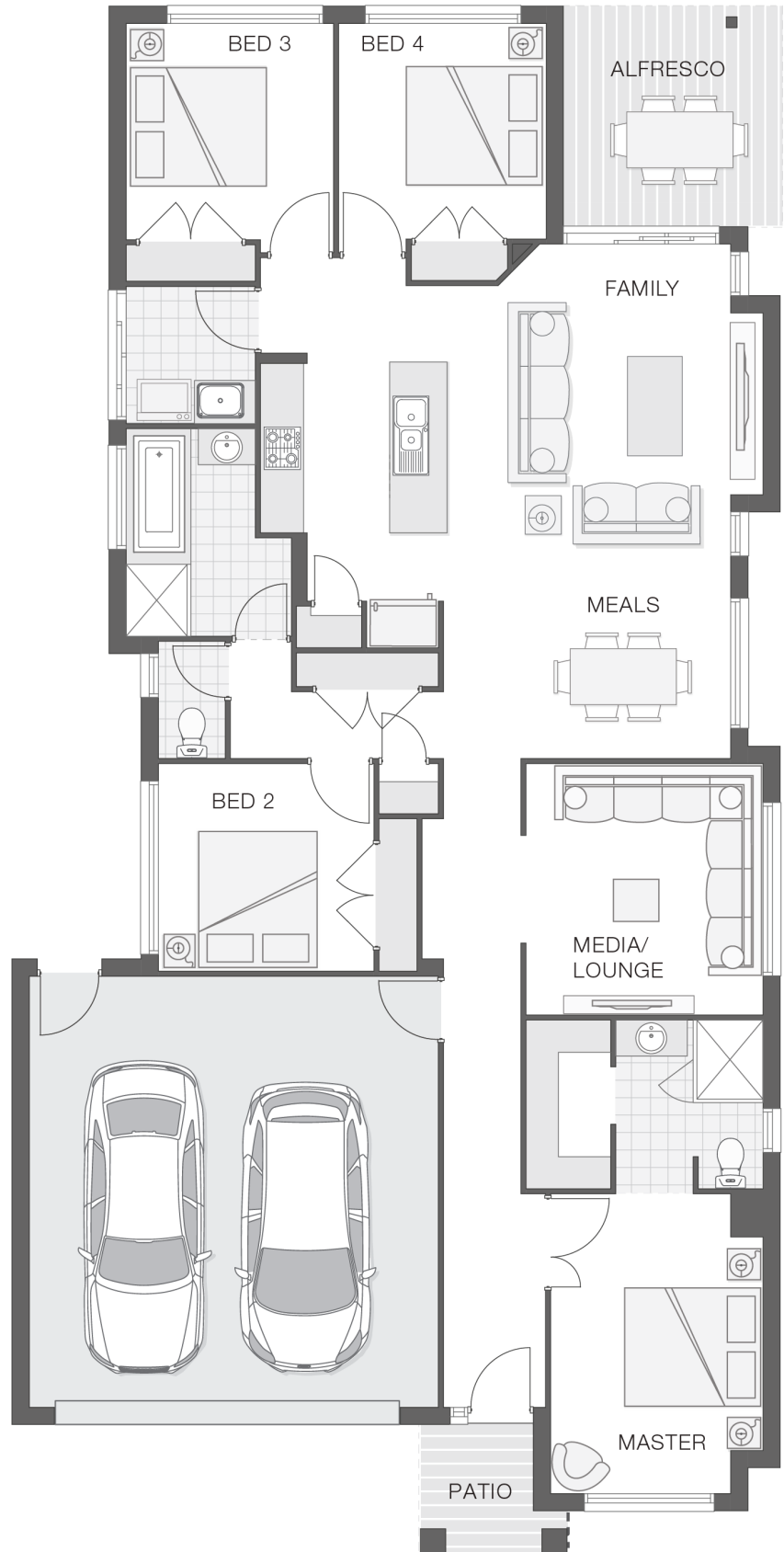
Powered by iBuildNew

adenbrook
homes

REF: IADEQHL559480

House Features:

- ✓ Tiling and carpet throughout
- ✓ Daikin ducted air conditioning
- ✓ Monier Atura Low-profile roof tiles or Colorbond roof
- ✓ LED downlights
- ✓ 20mm stone benchtops to kitchen, ensuite and bathrooms
- ✓ Westinghouse stainless steel dishwasher
- ✓ Externally ducted rangehood
- ✓ Exposed aggregate driveway and path
- ✓ 2590mm ceiling height to lower level
- ✓ Shower niche to ensuite & bathroom
- ✓ Brick and rendered letterbox
- ✓ Tiling and integral slab to alfresco
- ✓ TV antenna and clothesline
- ✓ Cold water tap to fridge space
- ✓ Soft-close drawers to kitchen, ensuite and bathrooms
- ✓ Front Render



ENQUIRE NOW:

Leigh Shepherd • P: 0407 771 521 • E: brisbane.display@adenbrook.com.au

Images depicted on this site are for illustration purposes only. Facades and other images of homes and land estates may include optional upgrades, additional fixtures, finishes and home or estate features that are not included in the base price of the home or land package such as landscaping, feature tiling, decking, furnishing, feature lighting, pools, etc. Land estate pricing and plans are subject to developer guidelines and may vary at any time.