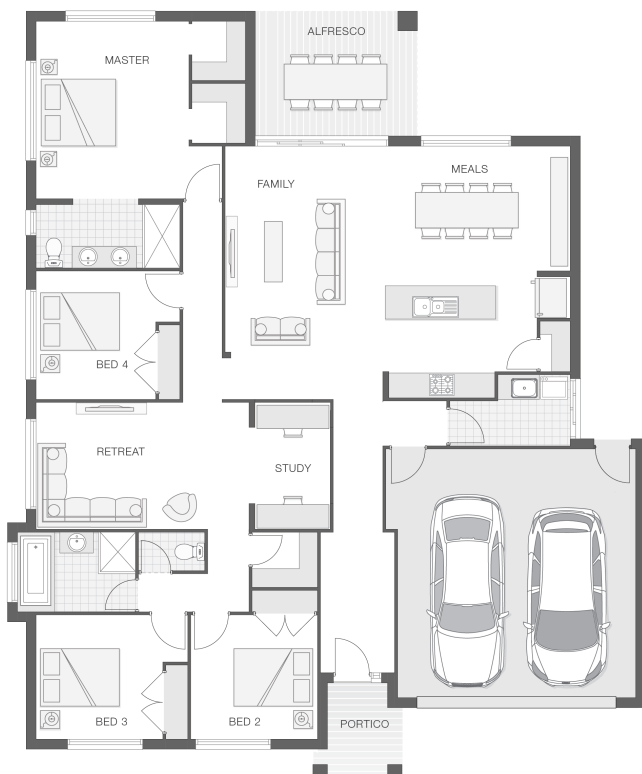




House Plan:



LOT #2172

Upper Caboolture

Address: New Road, Upper Caboolture, 4510



696 m²

The Iluka

Package Price From

4

2

2

25 sq

\$736,775*

About package:

Adenbrook Homes Brisbane is a local owned franchise which is part of a national network of highly experienced industry professionals located throughout Australia.

The Iluka home design is the epitome of lavish family living. This stylish design boasts sophistication, separation, and space. The alfresco entertaining area blends perfectly with the indoor living spaces and kitchen, creating an entertainment zone like none other. The luxury master retreat commands attention situated for privacy with generous his and her walk-in-robos and exquisite ensuite offering dual vanity and large shower. The additional bedrooms are sprawled across a large footprint with designated study or home office adjoining the retreat. The Iluka is the ultimate family living defined.

Bilson Facade Included
Daikin ducted air conditioning
Westinghouse stainless steel dishwasher
Grand 1020mm Madison 101 entry door
20mm stone benchtops to kitchen, ensuite and bathrooms
2590mm ceiling height to lower level
Exposed aggregate driveway and path
Externally ducted rangehood
TV antenna and clothesline
25deg Pitch Roof
Brick and rendered letterbox
Front Landscaping

ENQUIRE NOW:

Leigh Shepherd • P: 0407 771 521 • E: brisbane.display@adenbrook.com.au

Images depicted on this site are for illustration purposes only. Facades and other images of homes and land estates may include optional upgrades, additional fixtures, finishes and home or estate features that are not included in the base price of the home or land package such as landscaping, feature tiling, decking, furnishing, feature lighting, pools, etc. Land estate pricing and plans are subject to developer guidelines and may vary at any time.

Powered by iBuildNew

adenbrook
homes

REF: IADEQHL559482

House Features:

- ✓ Tiling and carpet throughout
- ✓ TV antenna and clothesline
- ✓ Brick and rendered letterbox
- ✓ Tiling and integral slab to alfresco
- ✓ Daikin ducted air conditioning
- ✓ 1020mm entry door
- ✓ Exposed aggregate driveway and path
- ✓ Soft-close drawers to kitchen, ensuite and bathrooms
- ✓ Shower niche to ensuite & bathroom
- ✓ Externally ducted rangehood
- ✓ LED downlights
- ✓ Monier Atura Low-profile roof tiles or Colorbond roof
- ✓ 2590mm ceiling height to lower level
- ✓ Cold water tap to fridge space
- ✓ Front Render
- ✓ Front Landscaping
- ✓ 25deg Pitch Roof



ENQUIRE NOW:

Leigh Shepherd • P: 0407 771 521 • E: brisbane.display@adenbrook.com.au

Images depicted on this site are for illustration purposes only. Facades and other images of homes and land estates may include optional upgrades, additional fixtures, finishes and home or estate features that are not included in the base price of the home or land package such as landscaping, feature tiling, decking, furnishing, feature lighting, pools, etc. Land estate pricing and plans are subject to developer guidelines and may vary at any time.