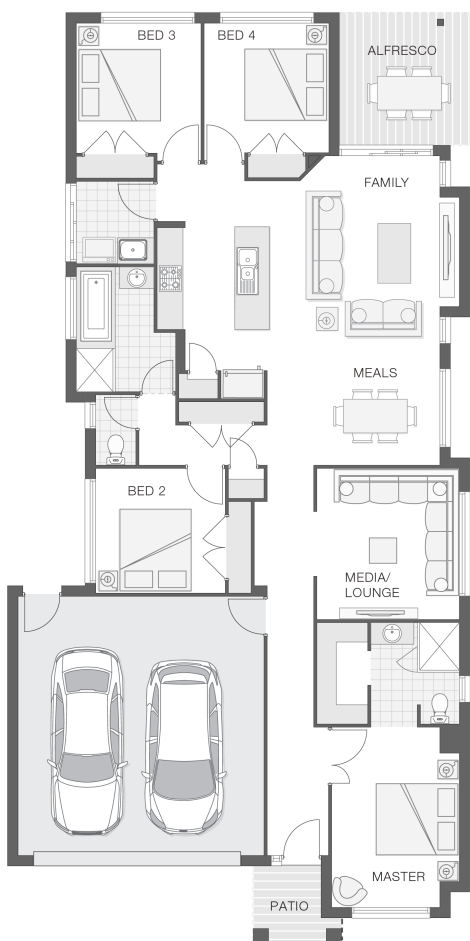




### House Plan:



### LOT #273

Griffin

Address: Awesome Parade, Griffin, 4503



379 m<sup>2</sup>

### The Saxon

Package Price From

4 2 2 21 sq

**\$799,990\***

### About package:

Adenbrook Homes Brisbane is a local owned franchise which is part of a national network of highly experienced industry professionals located throughout Australia.

The Saxon home design achieves the perfect balance between compact living and functionality. The clever design incorporates a central hub for entertaining both indoors and out with the tidy alfresco area adjoining the kitchen, family room and meals zones. A touch of luxury is added through the separate media or lounge room while all bedrooms are well-appointed to allow separation and privacy. The master retreat includes an ensuite and walk-in-robe to round out a convenient and punchy design.

Karin Facade Included  
Daikin ducted air conditioning  
Westinghouse stainless steel dishwasher  
Grand 1020mm Madison 101 entry door  
20mm stone benchtops to kitchen, ensuite and bathrooms  
2590mm ceiling height to lower level  
Cold water tap to fridge space  
Exposed aggregate driveway and path  
Externally ducted rangehood  
CAT 2 Noise  
Front Render  
H1 slab Included (if required)  
LED downlights  
Colorbond roof

### ENQUIRE NOW:

Leigh Shepherd • P: 0407 771 521 • E: brisbane.display@adenbrook.com.au

Images depicted on this site are for illustration purposes only. Facades and other images of homes and land estates may include optional upgrades, additional fixtures, finishes and home or estate features that are not included in the base price of the home or land package such as landscaping, feature tiling, decking, furnishing, feature lighting, pools, etc. Land estate pricing and plans are subject to developer guidelines and may vary at any time.

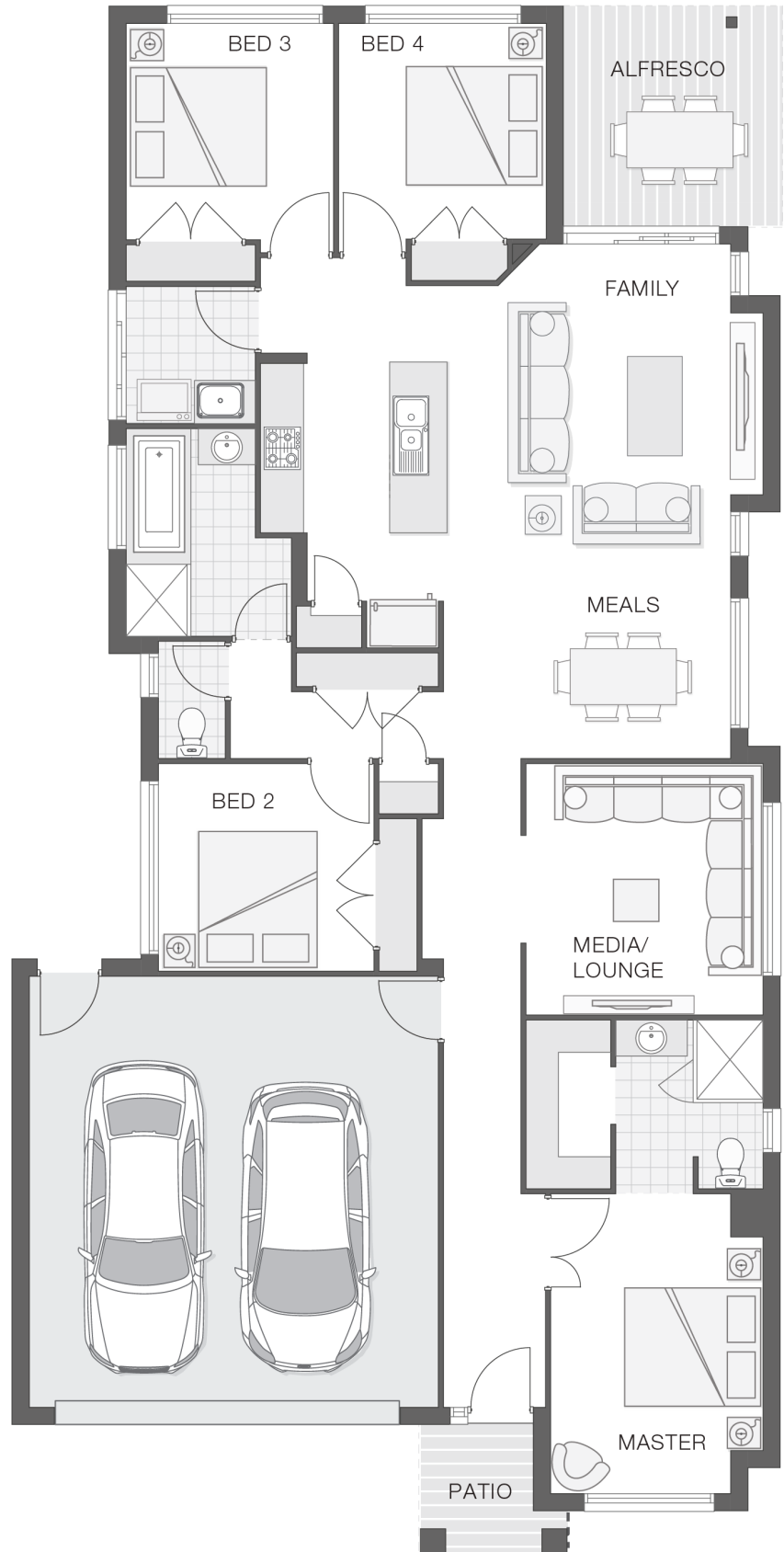
Powered by iBuildNew

adenbrook  
homes

REF: IADEQHL559483

### House Features:

- ✓ Tiling and carpet throughout
- ✓ TV antenna and clothesline
- ✓ Brick and rendered letterbox
- ✓ Exposed aggregate driveway and path
- ✓ Daikin ducted air conditioning
- ✓ Tiling and integral slab to alfresco
- ✓ LED downlights
- ✓ 2590mm ceiling height to lower level
- ✓ Cold water tap to fridge space
- ✓ 20mm stone benchtops to kitchen, ensuite and bathrooms
- ✓ Westinghouse stainless steel dishwasher
- ✓ Externally ducted rangehood
- ✓ Shower niche to ensuite & bathroom
- ✓ Soft-close drawers to kitchen, ensuite and bathrooms
- ✓ Front Render



### ENQUIRE NOW:

Leigh Shepherd • P: 0407 771 521 • E: [brisbane.display@adenbrook.com.au](mailto:brisbane.display@adenbrook.com.au)

Images depicted on this site are for illustration purposes only. Facades and other images of homes and land estates may include optional upgrades, additional fixtures, finishes and home or estate features that are not included in the base price of the home or land package such as landscaping, feature tiling, decking, furnishing, feature lighting, pools, etc. Land estate pricing and plans are subject to developer guidelines and may vary at any time.