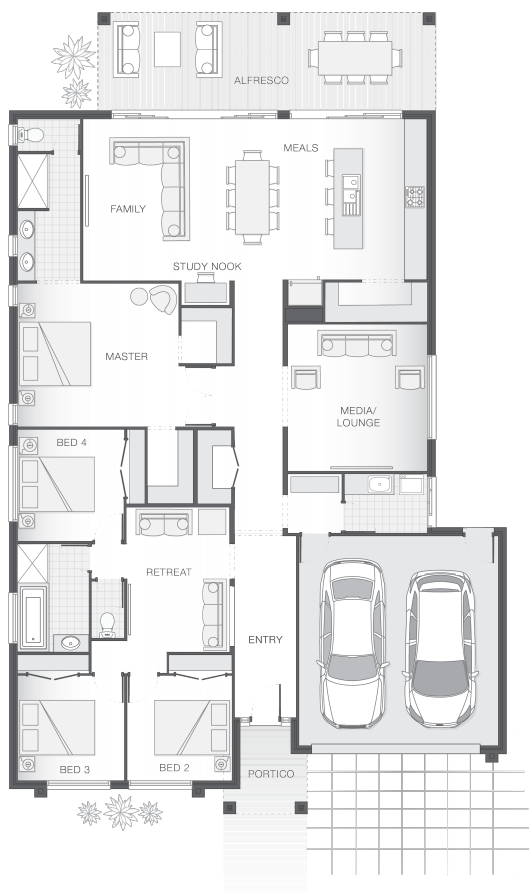




### House Plan:



### LOT #13

Upper Caboolture

Address: TBA, Upper Caboolture, 4510



3002 m<sup>2</sup>

### The Indigo

Package Price From

4 2 2 30 sq

**\$886,794\***

### About package:

Adenbrook Homes Brisbane is a local owned franchise which is part of a national network of highly experienced industry professionals located throughout Australia.

The Indigo home design is on trend, tasteful and well-appointed, creating the perfect sanctuary for the modern family. The rear of the home is nothing but lifestyle and entertaining with a huge alfresco space spanning the width of the home that seamlessly blends with the internal hub of kitchen, dining, and family rooms. With the luxury of a media room and separate retreat, you are spoilt with multiple living zones and great separation. The lavish master retreat boasts his and her walk-in-robos and great separation from the other bedroom wing.

Haven Facade Included  
Daikin ducted air conditioning  
Westinghouse stainless steel dishwasher  
Grand 1020mm Maddison 101 entry door  
20mm stone benchtops to kitchen, ensuite and bathrooms  
2590mm ceiling height to lower level  
Exposed aggregate driveway and path  
Externally ducted rangehood  
25 Deg pitch roof  
H1 slab Included  
LED downlights  
Monier Atura Low-profile roof tiles or Colorbond roof  
Shower niche to ensuite & bathroom

### ENQUIRE NOW:

Leigh Shepherd • P: 0407 771 521 • E: [brisbane.display@adenbrook.com.au](mailto:brisbane.display@adenbrook.com.au)

Images depicted on this site are for illustration purposes only. Facades and other images of homes and land estates may include optional upgrades, additional fixtures, finishes and home or estate features that are not included in the base price of the home or land package such as landscaping, feature tiling, decking, furnishing, feature lighting, pools, etc. Land estate pricing and plans are subject to developer guidelines and may vary at any time.

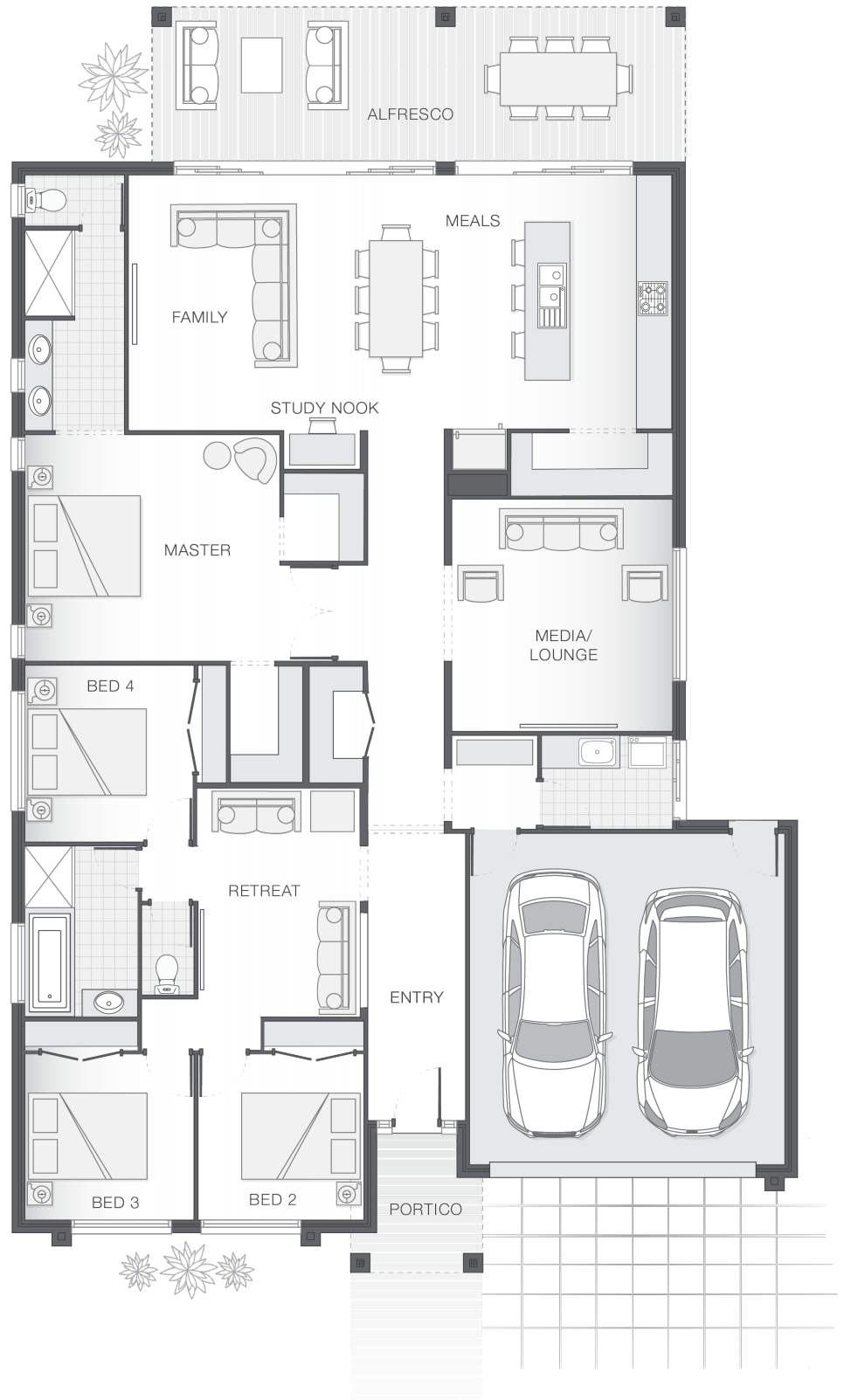
Powered by  iBuildNew

adenbrook  
homes

REF: IADEQHL559494

### House Features:

- ✓ Tiling and carpet throughout
- ✓ TV antenna and clothesline
- ✓ 1020mm entry door
- ✓ Exposed aggregate driveway and path
- ✓ Tiling and integral slab to alfresco
- ✓ Monier Atura Low-profile roof tiles or Colorbond roof
- ✓ LED downlights
- ✓ 25deg Pitch Roof
- ✓ 2590mm ceiling height to lower level
- ✓ Shower niche to ensuite & bathroom
- ✓ 20mm stone benchtops to kitchen, ensuite and bathrooms
- ✓ Westinghouse stainless steel dishwasher
- ✓ Externally ducted rangehood



### ENQUIRE NOW:

Leigh Shepherd • P: 0407 771 521 • E: [brisbane.display@adenbrook.com.au](mailto:brisbane.display@adenbrook.com.au)

Images depicted on this site are for illustration purposes only. Facades and other images of homes and land estates may include optional upgrades, additional fixtures, finishes and home or estate features that are not included in the base price of the home or land package such as landscaping, feature tiling, decking, furnishing, feature lighting, pools, etc. Land estate pricing and plans are subject to developer guidelines and may vary at any time.