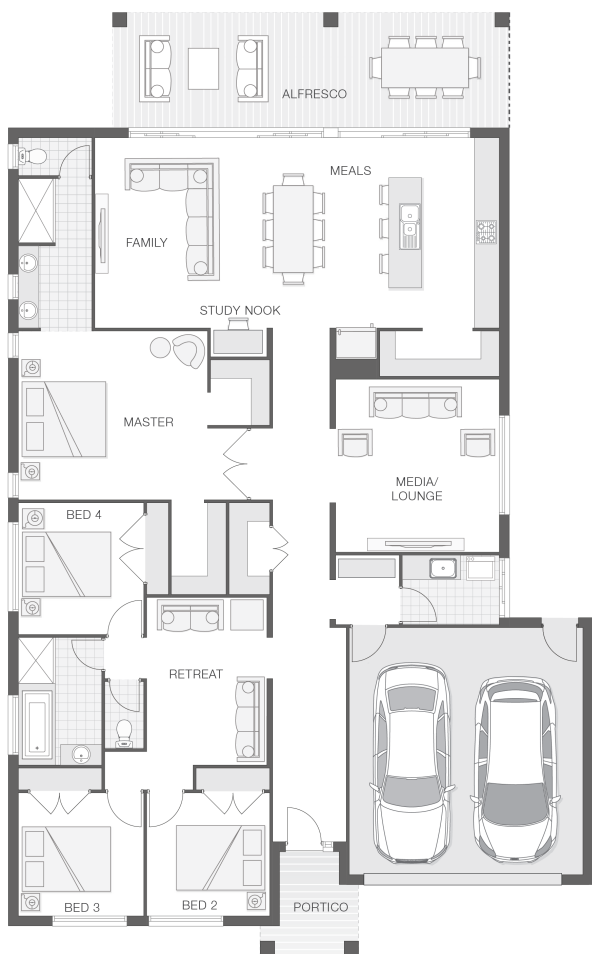


The Indigo

4 2 2 30 sq

Facade name: Byron

House Plan:



LOT #3

Nautica Fairways

Address: Safety Beach Drive, Safety Beach, 2456



801 m²

House and land package price:

From **\$1,004,900***

About package:

Only minutes north of the coastal village of Woolgoolga, you will find the beachside suburb of Safety Beach. Lot 3 is located well east of the highway and offers a short stroll to the sandy shores of Safety Beach. Just around the corner is the golf course and conveniently less than 3km from Woolgoolga shopping district this land really is position-perfect! The Indigo home design is on trend, tasteful and well-appointed, creating the perfect sanctuary for the modern family. The rear of the home is nothing but lifestyle and entertaining with a huge alfresco space spanning the width of the home that seamlessly blends with the internal hub of kitchen, dining and family rooms.

What's included in your beautifully finished, high quality new home

- All Council Fees and Approvals with M Class Soil
- Full sarking wrap to treated timber frames and roof
- Insulation to walls and ceiling, flyscreens
- Carpet / tiles or vinyl flooring
- Recessed wet areas
- Westinghouse appliances
- Alfresco with recessed stacking sliding doors
- Drop-in laundry tub with cabinet and clothesline
- Full electrical layout with downlights and feature lighting and TV aerial
- Water tank, mailbox, and concrete driveway

ULTIMATE UPGRADE BUNDLE FOR ONLY \$4990

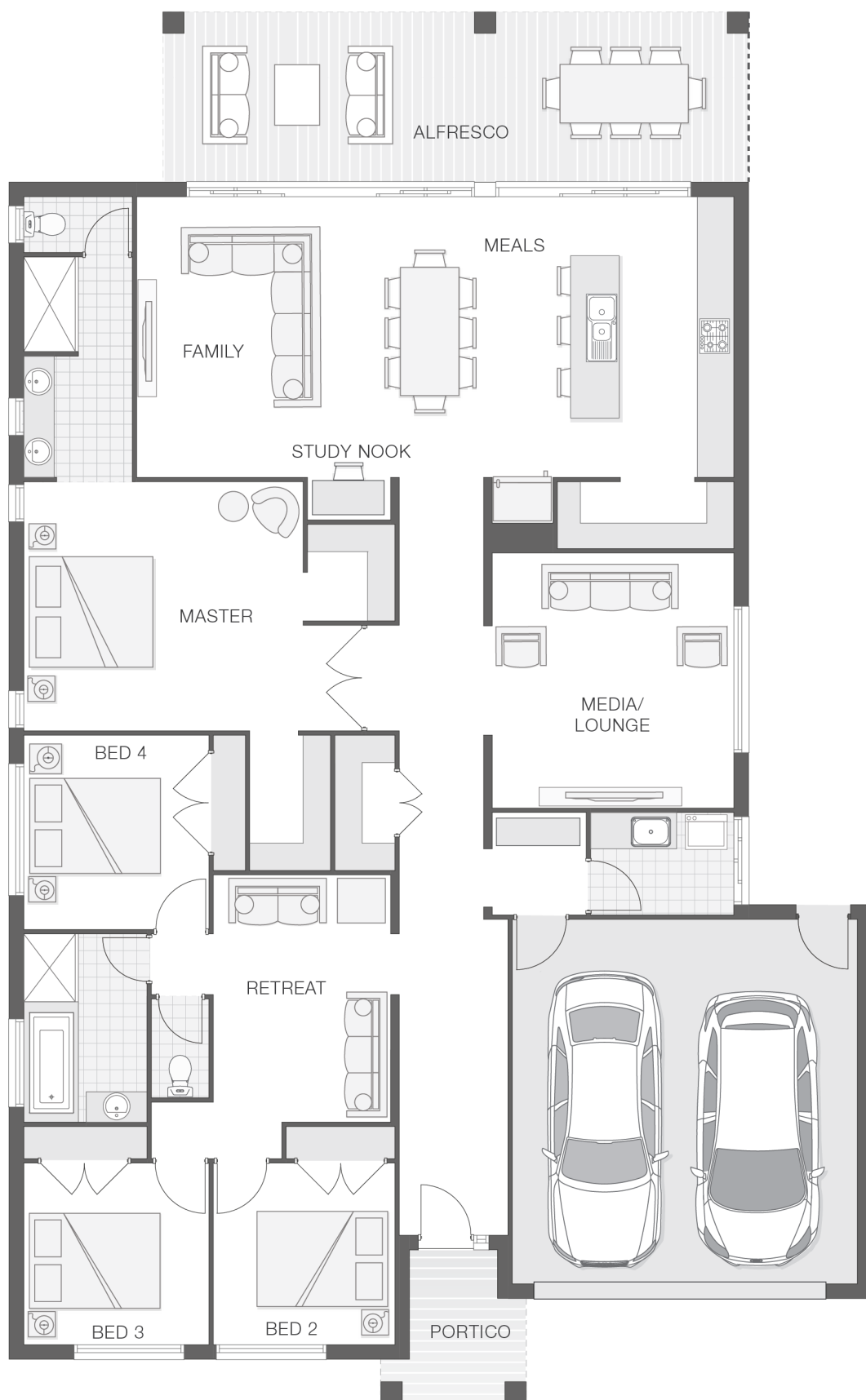
ENQUIRE NOW:

Katie Hawkins • P: 0412797925 • E: coffs.display@adenbrook.com.au

Plans and designs depicted may change with facade selection. All drawings and photographs are for illustrative purposes only. This work is exclusively owned by AB Aust. IP Pty Ltd (ACN 163 575 077) and cannot be reproduced or copied wholly or in part, in any form without permission of AB Aust. IP Pty Ltd. Any prices in this document include GST, are subject to change without notice, relate only to the base house price and standard inclusions. Site costs will vary depending on site conditions, local Council requirements, estate guidelines and any other statutory requirements applicable. Adenbrook Homes does not have a hold on the block, this package is subject to land availability and you securing the land through the land agent directly. For more information please speak to one of our friendly New Home Consultants.

House Features:

- ✓ 20mm stone benchtops to kitchen
- ✓ 900mm Cooker and Dishwasher
- ✓ Wideline aluminium windows, stacker and sliding doors, and flyscreens
- ✓ Overhead cupboards to kitchen, 4 shelves to Pantry and Linen
- ✓ Double lock-up garage with remotes, mailbox, and clothesline
- ✓ 3 included facade options and complimentary window changes
- ✓ Quality Timber Look Flooring, Carpet and Tiles
- ✓ 2570mm high ceilings
- ✓ Square set ceilings to living area
- ✓ Brushed Concrete Driveway
- ✓ Dishwasher
- ✓ Brick exterior, concrete tile roof, 45sqm grey concrete driveway
- ✓ M class soil and 500mm fall over building platform
- ✓ Three (3) coat Haymes low toxic internal paint system
- ✓ Guaranteed build time, fixed price and no hidden costs
- ✓ Extended polished edge mirrors full wall width
- ✓ Termite resistant "blue pine" framing and trusses and physical termite barriers
- ✓ Concrete Alfresco and Portico areas
- ✓ Flyscreens
- ✓ Letterbox and Clothesline
- ✓ Remote Controlled Garage Door + 2 remotes
- ✓ 1200mm Hinged Wideline Aluminium Entry Door
- ✓ Ultimate upgrade bundle



ENQUIRE NOW:

Katie Hawkins • P: 0412797925 • E: coffs.display@adenbrook.com.au

Plans and designs depicted may change with facade selection. All drawings and photographs are for illustrative purposes only. This work is exclusively owned by AB Aust. IP Pty Ltd (ACN 163 575 077) and cannot be reproduced or copied wholly or in part, in any form without permission of AB Aust. IP Pty Ltd. Any prices in this document include GST, are subject to change without notice, relate only to the base house price and standard inclusions. Site costs will vary depending on site conditions, local Council requirements, estate guidelines and any other statutory requirements applicable. Adenbrook Homes does not have a hold on the block, this package is subject to land availability and you securing the land through the land agent directly. For more information please speak to one of our friendly New Home Consultants.