

# The Capestone

4 2 2 26 sq

Facade name: Benson

## House Plan:

### LOT #516

Woopi Beach Estate

Address: Flat Top Drive, Woolgoolga, 2456



737 m<sup>2</sup>

House and land package price:

From **\$1,000,900\***

### About package:

Only minutes south of the coastal village of Woolgoolga, you will find the flourishing residential subdivision known as Woopi Beach Estate. Located east of the highway and offering a short stroll to the Solitary Islands Marine Park where Hearn's Lake meets the Pacific Ocean, this land really is position perfect! The Capestone home design is the perfect balance between entertaining and relaxation. The lower level offers multiple entertainment zones including an alfresco and indoor dining area, and a separate media room. The upper level features the master retreat with ensuite and walk-in-robe creating a private sanctuary away from the main living area of the home.

What's included in your beautifully finished, high quality new home

- All Council Fees and Approvals with M Class Soil
- Full sarking wrap to treated timber frames and roof
- Insulation to walls and ceiling, flyscreens
- Carpet / tiles or vinyl flooring
- Recessed wet areas
- Westinghouse appliances
- Alfresco with recessed stacking sliding doors
- Drop-in laundry tub with cabinet and clothesline
- Full electrical layout with downlights and feature lighting and TV aerial
- Water tank, mailbox, and concrete driveway

ULTIMATE UPGRADE BUNDLE FOR ONLY \$4990

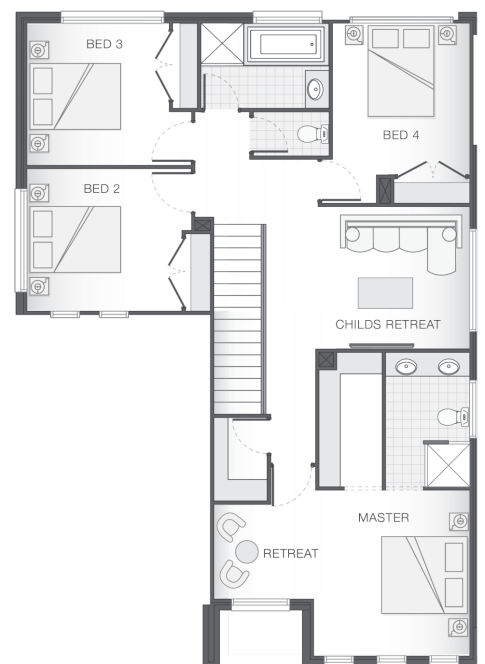
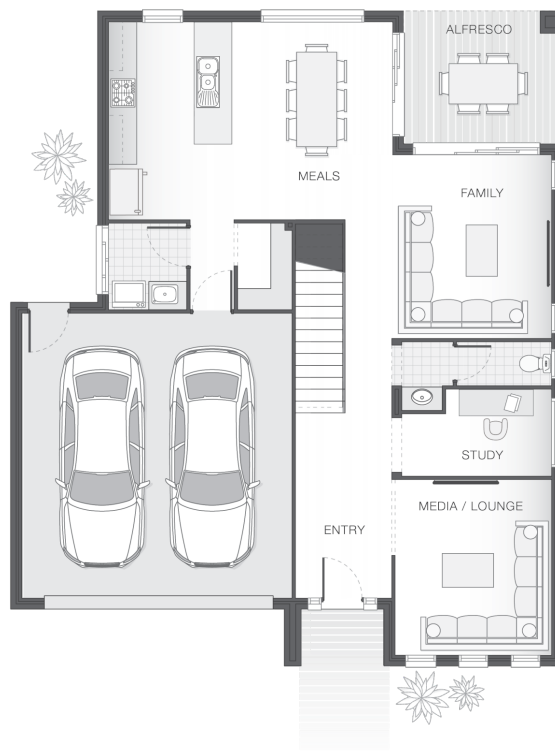
## ENQUIRE NOW:

Katie Hawkins • P: 0412797925 • E: [coffs.display@adenbrook.com.au](mailto:coffs.display@adenbrook.com.au)

Plans and designs depicted may change with facade selection. All drawings and photographs are for illustrative purposes only. This work is exclusively owned by AB Aust. IP Pty Ltd (ACN 163 575 077) and cannot be reproduced or copied wholly or in part, in any form without permission of AB Aust. IP Pty Ltd. Any prices in this document include GST, are subject to change without notice, relate only to the base house price and standard inclusions. Site costs will vary depending on site conditions, local Council requirements, estate guidelines and any other statutory requirements applicable. Adenbrook Homes does not have a hold on the block, this package is subject to land availability and you securing the land through the land agent directly. For more information please speak to one of our friendly New Home Consultants.

### House Features:

- ✓ 20mm stone benchtops to kitchen
- ✓ 900mm Cooker and Dishwasher
- ✓ Three (3) coat Haymes low toxic internal paint system
- ✓ Guaranteed build time, fixed price and no hidden costs
- ✓ M class soil and 500mm fall over building platform
- ✓ Wideline aluminium windows, stacker and sliding doors, and flyscreens
- ✓ Overhead cupboards to kitchen, 4 shelves to Pantry and Linen
- ✓ Double lock-up garage with remotes, mailbox, and clothesline
- ✓ 3 included facade options and complimentary window changes
- ✓ Quality Timber Look Flooring, Carpet and Tiles
- ✓ Brick exterior, concrete tile roof, 45sqm grey concrete driveway
- ✓ Brushed Concrete Driveway
- ✓ Dishwasher
- ✓ Flyscreens
- ✓ Concrete Alfresco and Portico areas
- ✓ Extended polished edge mirrors full wall width
- ✓ Termite resistant "blue pine" framing and trusses and physical termite barriers
- ✓ Letterbox and Clothesline
- ✓ Remote Controlled Garage Door + 2 remotes
- ✓ 1200mm Hinged Wideline Aluminium Entry Door
- ✓ Ultimate upgrade bundle
- ✓ 2570mm high ceilings
- ✓ Square set ceilings to living area



### ENQUIRE NOW:

Katie Hawkins • P: 0412797925 • E: [coffs.display@adenbrook.com.au](mailto:coffs.display@adenbrook.com.au)

Plans and designs depicted may change with facade selection. All drawings and photographs are for illustrative purposes only. This work is exclusively owned by AB Aust. IP Pty Ltd (ACN 163 575 077) and cannot be reproduced or copied wholly or in part, in any form without permission of AB Aust. IP Pty Ltd. Any prices in this document include GST, are subject to change without notice, relate only to the base house price and standard inclusions. Site costs will vary depending on site conditions, local Council requirements, estate guidelines and any other statutory requirements applicable. Adenbrook Homes does not have a hold on the block, this package is subject to land availability and you securing the land through the land agent directly. For more information please speak to one of our friendly New Home Consultants.