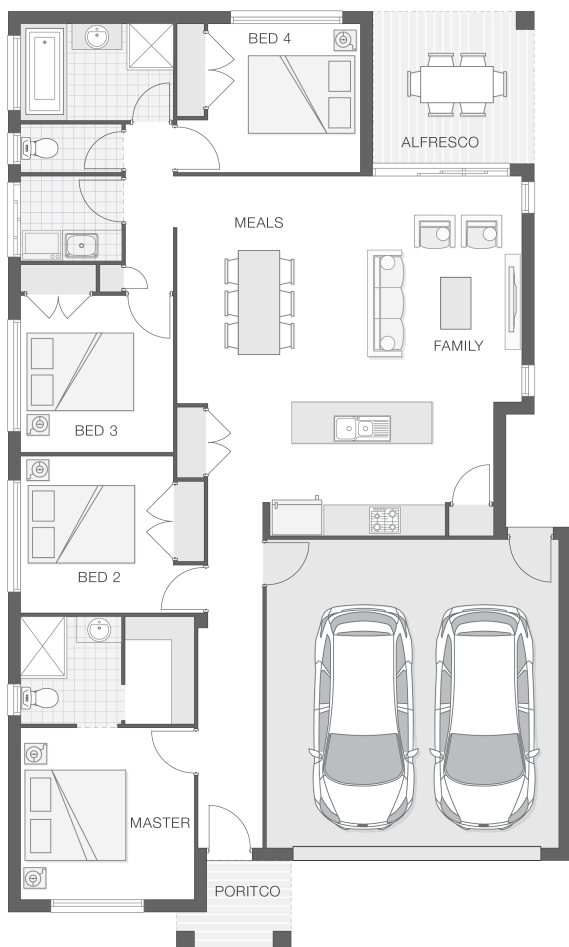


The Catarina

4 2 2 19 sq

Facade name: Byron

House Plan:



LOT #108

Bellbird Park Estate

Address: Bellbird Park Estate, Nambucca Heads, 2448



651 m²

House and land package price:

From **\$686,900***

About package:

Bellbird Park Estate provides a rural lifestyle, yet close enough to beaches and wide-open spaces. Nambucca Heads is a beautiful coastal destination located on the Mid North Coast of NSW, at the mouth of the Nambucca River. The Catarina home design is fresh and vibrant and provides a stylish home for a growing family. The entertaining zone presents an alfresco space that effortlessly integrates with the kitchen, family room and meals zones providing the ideal location for celebrations, relaxation and family dining all year round.

What's included in your beautifully finished, high quality new home

- All Council Fees and Approvals with M Class Soil
- Full sarking wrap to treated timber frames and roof
- Insulation to walls and ceiling, flyscreens
- Carpet / tiles or vinyl flooring
- Recessed wet areas
- Westinghouse appliances
- Alfresco with recessed stacking sliding doors
- Drop-in laundry tub with cabinet and clothesline
- Full electrical layout with downlights and feature lighting and TV aerial
- Water tank, mailbox, and concrete driveway

ULTIMATE UPGRADE BUNDLE FOR ONLY \$4990

EXTERNAL / INTERNAL

- Hume Savoy 1200mm hinged entry door

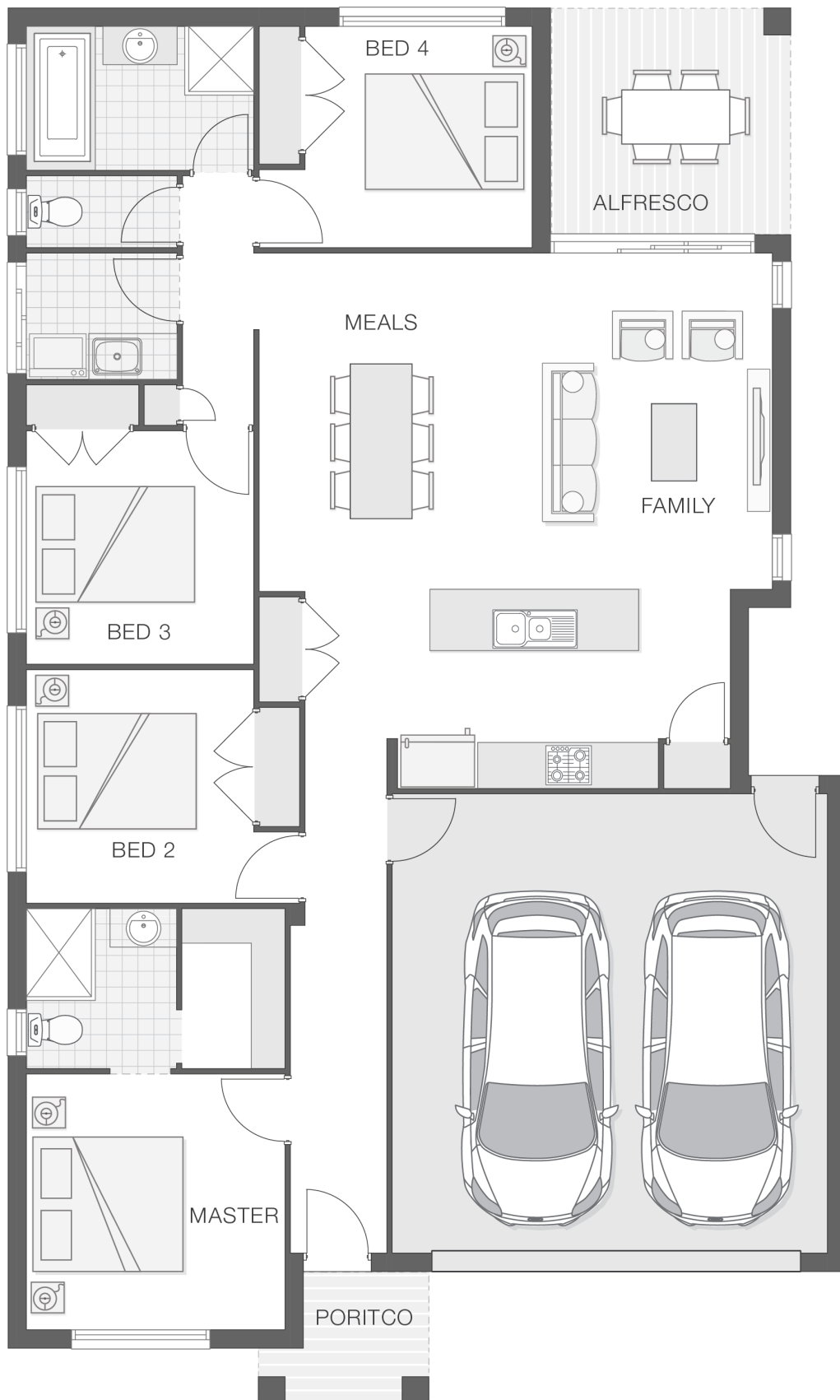
ENQUIRE NOW:

Katie Hawkins • P: 0412797925 • E: coffs.display@adenbrook.com.au

Plans and designs depicted may change with facade selection. All drawings and photographs are for illustrative purposes only. This work is exclusively owned by AB Aust. IP Pty Ltd (ACN 163 575 077) and cannot be reproduced or copied wholly or in part, in any form without permission of AB Aust. IP Pty Ltd. Any prices in this document include GST, are subject to change without notice, relate only to the base house price and standard inclusions. Site costs will vary depending on site conditions, local Council requirements, estate guidelines and any other statutory requirements applicable. Adenbrook Homes does not have a hold on the block, this package is subject to land availability and you securing the land through the land agent directly. For more information please speak to one of our friendly New Home Consultants.

House Features:

- ✓ 20mm stone benchtops to kitchen
- ✓ 900mm Cooker and Dishwasher
- ✓ Overhead cupboards to kitchen, 4 shelves to Pantry and Linen
- ✓ Double lock-up garage with remotes, mailbox, and clothesline
- ✓ 3 included facade options and complimentary window changes
- ✓ Quality Timber Look Flooring, Carpet and Tiles
- ✓ Dishwasher
- ✓ Brushed Concrete Driveway
- ✓ Brick exterior, concrete tile roof, 45sqm grey concrete driveway
- ✓ M class soil and 500mm fall over building platform
- ✓ Wideline aluminium windows, stacker and sliding doors, and flyscreens
- ✓ Three (3) coat Haymes low toxic internal paint system
- ✓ Guaranteed build time, fixed price and no hidden costs
- ✓ Termite resistant "blue pine" framing and trusses and physical termite barriers
- ✓ Flyscreens
- ✓ Concrete Alfresco and Portico areas
- ✓ Extended polished edge mirrors full wall width
- ✓ Remote Controlled Garage Door + 2 remotes
- ✓ Letterbox and Clothesline
- ✓ 1200mm Hinged Wideline Aluminium Entry Door
- ✓ Ultimate upgrade bundle
- ✓ Square set ceilings to living area
- ✓ 2570mm high ceilings



ENQUIRE NOW:

Katie Hawkins • P: 0412797925 • E: coffs.display@adenbrook.com.au

Plans and designs depicted may change with facade selection. All drawings and photographs are for illustrative purposes only. This work is exclusively owned by AB Aust. IP Pty Ltd (ACN 163 575 077) and cannot be reproduced or copied wholly or in part, in any form without permission of AB Aust. IP Pty Ltd. Any prices in this document include GST, are subject to change without notice, relate only to the base house price and standard inclusions. Site costs will vary depending on site conditions, local Council requirements, estate guidelines and any other statutory requirements applicable. Adenbrook Homes does not have a hold on the block, this package is subject to land availability and you securing the land through the land agent directly. For more information please speak to one of our friendly New Home Consultants.