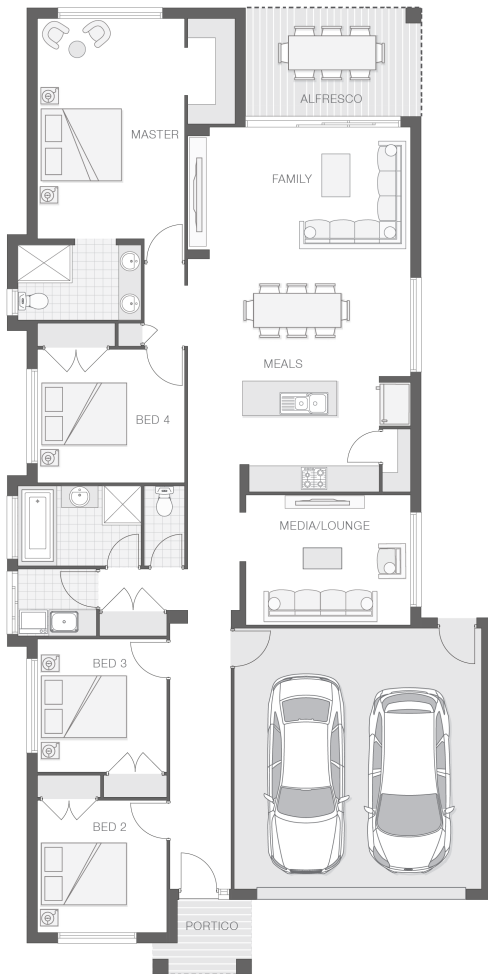


# The Keppel

4 2 2 22 sq

Facade name: Byron

## House Plan:



## LOT #14

Clarenza Estate

Address: Clarenza Estate, Clarenza, 2460



15010 m<sup>2</sup>

House and land package price:

From **\$698,900\***

## About package:

Peacefully removed from the hustle and bustle of city living with this rare opportunity to purchase one of these premium blocks sized approx 3.7 acres in Clarenza Rise Estate. Enrich your lifestyle by acquiring this beautiful piece of paradise. so, this can become whatever your imagination allows, by building your dream home. The Keppel home design is modern and meticulous with attention to detail at every turn. The design essentially separates the home into individual zones to provide privacy and tranquillity while also accommodating entertainment and family living.

What's included in your beautifully finished, high quality new home

- All Council Fees and Approvals with M Class Soil
- Full sarking wrap to treated timber frames and roof
- Insulation to walls and ceiling, flyscreens
- Carpet / tiles or vinyl flooring
- Recessed wet areas
- Westinghouse appliances
- Alfresco with recessed stacking sliding doors
- Drop-in laundry tub with cabinet and clothesline
- Full electrical layout with downlights and feature lighting and TV aerial
- Water tank, mailbox, and concrete driveway

ULTIMATE UPGRADE BUNDLE FOR ONLY \$4990

EXTERNAL / INTERNAL

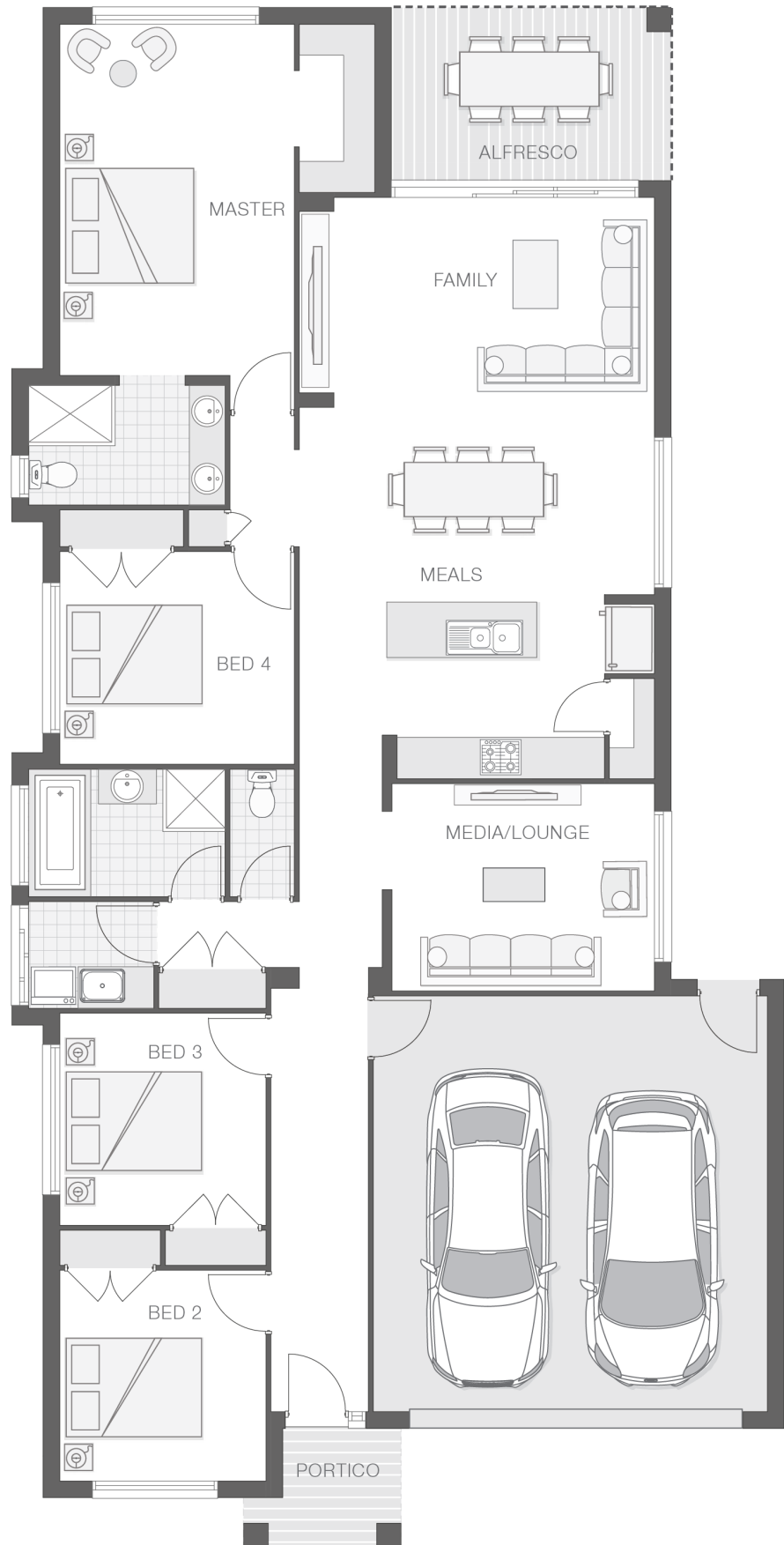
## ENQUIRE NOW:

Katie Hawkins • P: 0412797925 • E: [coffs.display@adenbrook.com.au](mailto:coffs.display@adenbrook.com.au)

Plans and designs depicted may change with facade selection. All drawings and photographs are for illustrative purposes only. This work is exclusively owned by AB Aust. IP Pty Ltd (ACN 163 575 077) and cannot be reproduced or copied wholly or in part, in any form without permission of AB Aust. IP Pty Ltd. Any prices in this document include GST, are subject to change without notice, relate only to the base house price and standard inclusions. Site costs will vary depending on site conditions, local Council requirements, estate guidelines and any other statutory requirements applicable. Adenbrook Homes does not have a hold on the block, this package is subject to land availability and you securing the land through the land agent directly. For more information please speak to one of our friendly New Home Consultants.

### House Features:

- ✓ 20mm stone benchtops to kitchen
- ✓ 900mm Cooker and Dishwasher
- ✓ Wideline aluminium windows, stacker and sliding doors, and flyscreens
- ✓ Overhead cupboards to kitchen, 4 shelves to Pantry and Linen
- ✓ Three (3) coat Haymes low toxic internal paint system
- ✓ Double lock-up garage with remotes, mailbox, and clothesline
- ✓ Guaranteed build time, fixed price and no hidden costs
- ✓ M class soil and 500mm fall over building platform
- ✓ 3 included facade options and complimentary window changes
- ✓ Brick exterior, concrete tile roof, 45sqm grey concrete driveway
- ✓ Quality Timber Look Flooring, Carpet and Tiles
- ✓ 2570mm high ceilings
- ✓ Square set ceilings to living area
- ✓ Dishwasher
- ✓ Brushed Concrete Driveway
- ✓ Termite resistant "blue pine" framing and trusses and physical termite barriers
- ✓ Extended polished edge mirrors full wall width
- ✓ Concrete Alfresco and Portico areas
- ✓ Flyscreens
- ✓ Letterbox and Clothesline
- ✓ Remote Controlled Garage Door + 2 remotes
- ✓ 1200mm Hinged Wideline Aluminium Entry Door
- ✓ Ultimate upgrade bundle



### ENQUIRE NOW:

Katie Hawkins • P: 0412797925 • E: [coffs.display@adenbrook.com.au](mailto:coffs.display@adenbrook.com.au)