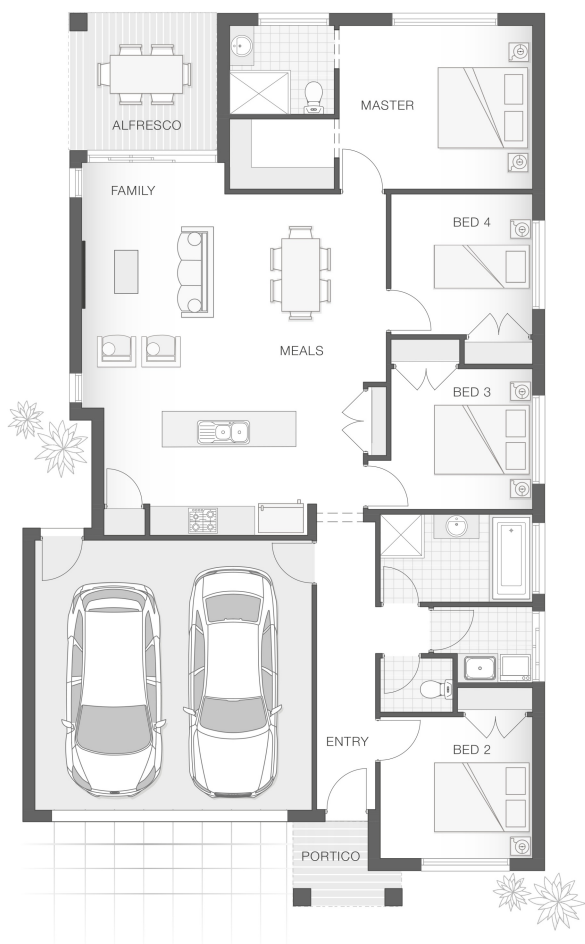


The Brampton - Option Z

4 2 2 19 sq

Facade name: Haven

House Plan:



LOT #8

The Gardens

Address: Proposed Road, Tahmoor, 2573



451.3 m²

House and land package price:

From **\$868,000***

About package:

This Adenbrook Home & Land package is located in the highly sought-after estate of THE GARDENS.

Set on a 451.3m² block of land, we have coupled it with our Brampton Z home design.

This House and Land Package includes:-

- * Standard Site Costs and Standard Basix Requirements
- * Builders range tiles & carpet throughout home
- * Tiling to the Alfresco and Portico
- * Coloured Concrete Driveway
- * Daiken Reverse Cycle Ducted Air Con.
- * Caroma Bathroom Accessories
- * PLUS our fantastic Ultimate Upgrade Bundle!
- * Also PLUS our new promotion LUXE LIVING UPGRADE!

-- Our ULTIMATE BUNDLE PACKAGE has fantastic inclusions of
* 2590mm ceiling heights throughout (ground floor only to double storey homes)

- * shower Niche to Bathroom and Ensuite
- * Monier Atura Low Profile Roof Tiles
- * 1020mm Entry Door
- * Flyscreens to all openable windows
- * 20mm Stone benchtop to the kitchen, bathroom and Ensuite.
- * Westinghouse Dishwasher, just to name a few

Don't miss out, enquire today to find out how to make this dream a reality

ENQUIRE NOW:

Sarah Kerswell • P: 0406 248 064 • E: sydneywest.southwest@adenbrook.com.au

adenbrook
homes

Plans and designs depicted may change with facade selection. All drawings and photographs are for illustrative purposes only. This work is exclusively owned by AB Aust. IP Pty Ltd (ACN 163 575 077) and cannot be reproduced or copied wholly or in part, in any form without permission of AB Aust. IP Pty Ltd. Any prices in this document include GST, are subject to change without notice, relate only to the base house price and standard inclusions. Site costs will vary depending on site conditions, local Council requirements, estate guidelines and any other statutory requirements applicable. Adenbrook Homes does not have a hold on the block, this package is subject to land availability and you securing the land through the land agent directly. For more information please speak to one of our friendly New Home Consultants.

House Features:

- ✓ Tiling to the Alfresco and Portico
- ✓ 1020mm Entry Door
- ✓ Shower Niches
- ✓ R2 Walls and R4 Ceiling Insulation
- ✓ Soft-close drawers and doors to Kitchen and Bathrooms
- ✓ 2590mm Ceiling Upgrade
- ✓ Standard Site Costs and Standard Basix Requirements
- ✓ Coloured Concrete Driveway
- ✓ 20mm Stone benchtop to the kitchen, bathroom and Ensuite.
- ✓ 2x Gas Points
- ✓ Flyscreens To all openable windows
- ✓ Much More...
- ✓ Builders range tiles & carpet throughout home
- ✓ Daiken Reverse Cycle Ducted Air Conditioning
- ✓ Westinghouse Cooktop, Oven and Dishwasher
- ✓ Monier Atura low-profile roof tiles
- ✓ 2590mm Ceiling Upgrade to the Ground Floor Only
- ✓ Clipsal Iconic Ultramodern range Switch Gear



ENQUIRE NOW:

Sarah Kerswell • P: 0406 248 064 • E: sydneywest.southwest@adenbrook.com.au

Plans and designs depicted may change with facade selection. All drawings and photographs are for illustrative purposes only. This work is exclusively owned by AB Aust. IP Pty Ltd (ACN 163 575 077) and cannot be reproduced or copied wholly or in part, in any form without permission of AB Aust. IP Pty Ltd. Any prices in this document include GST, are subject to change without notice, relate only to the base house price and standard inclusions. Site costs will vary depending on site conditions, local Council requirements, estate guidelines and any other statutory requirements applicable. Adenbrook Homes does not have a hold on the block, this package is subject to land availability and you securing the land through the land agent directly. For more information please speak to one of our friendly New Home Consultants.