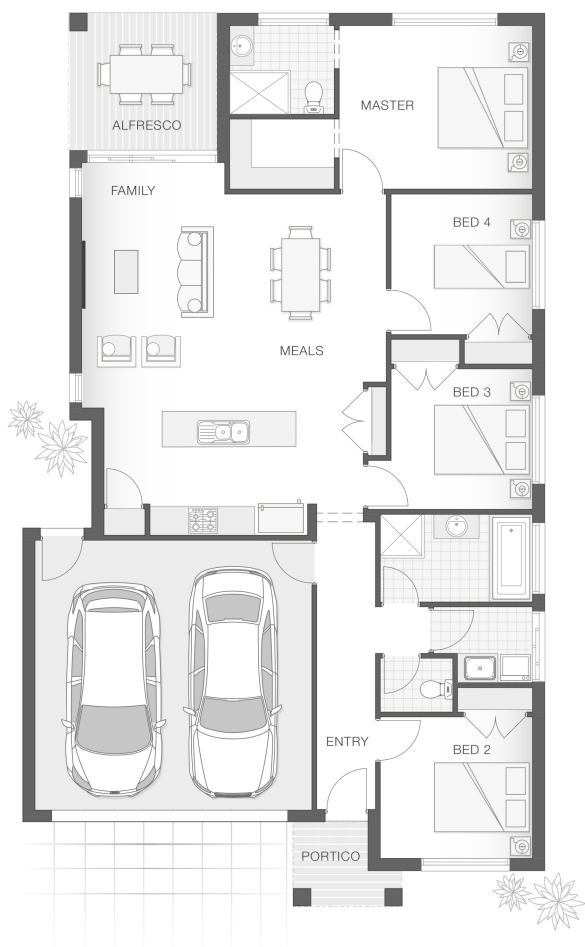


The Brampton - Option Z

4 2 2 19 sq

Facade name: Bexley

House Plan:



LOT #37

Fifteenth Ave Estate

Address: Proposed Road, Austral, 2179



375 m²

House and land package price:

From **\$1,110,500***

About package:

This Adenbrook Home & Land package is located in the highly sought-after estate of Fifteenth Avenue in Austral. Set on a 375m² block of land, we have coupled it with our Brampton Z (SYD) home design with our Bexley facade. Land is due to register late 2022

This House and Land Package includes:-

- * Standard Site Costs and Standard Basix Requirements
- * Builders range tiles & carpet throughout home
- * Tiling to the Alfresco and Portico
- * Colour\ed Concrete Driveway
- * Daiken Reverse Cycle Ducted Air Con.
- * PLUS our fantastic Ultimate Upgrade Bundle!
- * Also includes our Luxe Living Upgrade Promotion!

-- Our ULTIMATE BUNDLE PACKAGE has fantastic inclusions of

- * 2590mm ceiling heights throughout (ground floor only to double storey homes)
- * shower Niche to Bathroom and Ensuite
- * Monier Atura Low Profile Roof Tiles
- * 1020mm Entry Door
- * Flyscreens to all openable windows
- * 20mm Stone benchtop to the kitchen, bathroom and Ensuite.
- * Westinghouse Dishwasher, just to name a few

Don't miss out, enquire today to find out how to make this dream a reality

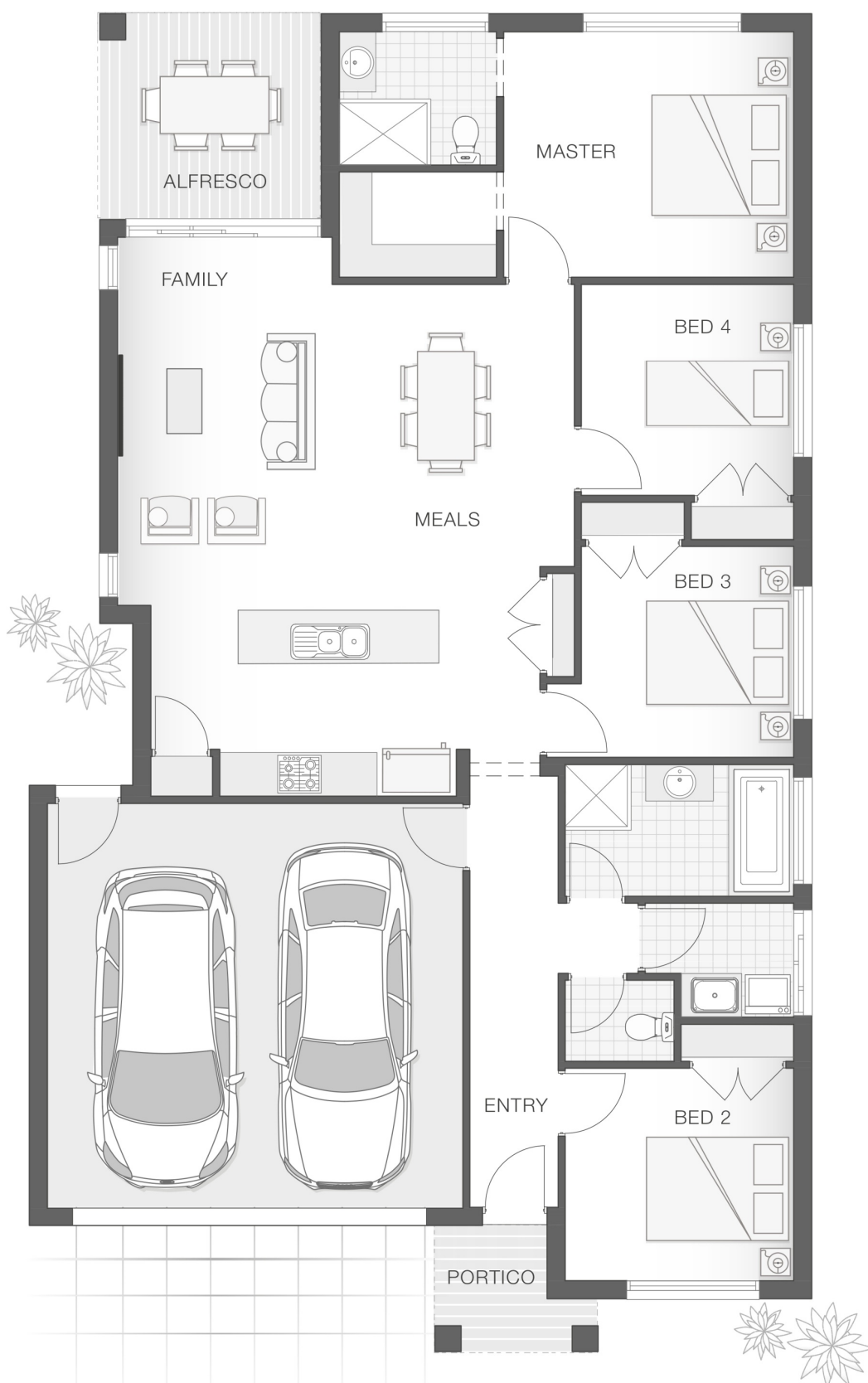
ENQUIRE NOW:

Sarah Kerswell • P: 0406 248 064 • E: sydneywest.southwest@adenbrook.com.au

Images depicted on this site are for illustration purposes only. Facades and other images of homes and land estates may include optional upgrades, additional fixtures, finishes and home or estate features that are not included in the base price of the home or land package such as landscaping, feature tiling, decking, furnishing, feature lighting, pools, etc. Land estate pricing and plans are subject to developer guidelines and may vary at any time.

House Features:

- ✓ Tiling to the Alfresco and Portico
- ✓ 1020mm Entry Door
- ✓ Shower Niches
- ✓ R2 Walls and R4 Ceiling Insulation
- ✓ Soft-close drawers and doors to Kitchen and Bathrooms
- ✓ Standard Site Costs and Standard Basix Requirements
- ✓ Coloured Concrete Driveway
- ✓ 20mm Stone benchtop to the kitchen, bathroom and Ensuite.
- ✓ 2x Gas Points
- ✓ Flyscreens To all openable windows
- ✓ Much More...
- ✓ Builders range tiles & carpet throughout home
- ✓ Daiken Reverse Cycle Ducted Air Conditioning
- ✓ Westinghouse Cooktop, Oven and Dishwasher
- ✓ Monier Atura low-profile roof tiles
- ✓ Clipsal Iconic Ultramodern range Switch Gear
- ✓ 2590mm Ceiling Upgrade to the Ground Floor Only



ENQUIRE NOW:

Sarah Kerswell • P: 0406 248 064 • E: sydneywest.southwest@adenbrook.com.au

Images depicted on this site are for illustration purposes only. Facades and other images of homes and land estates may include optional upgrades, additional fixtures, finishes and home or estate features that are not included in the base price of the home or land package such as landscaping, feature tiling, decking, furnishing, feature lighting, pools, etc. Land estate pricing and plans are subject to developer guidelines and may vary at any time.